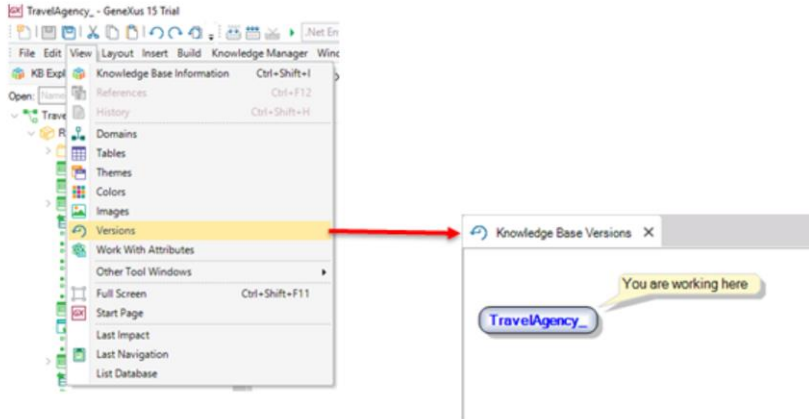


# Versionamento da Base de Conhecimento

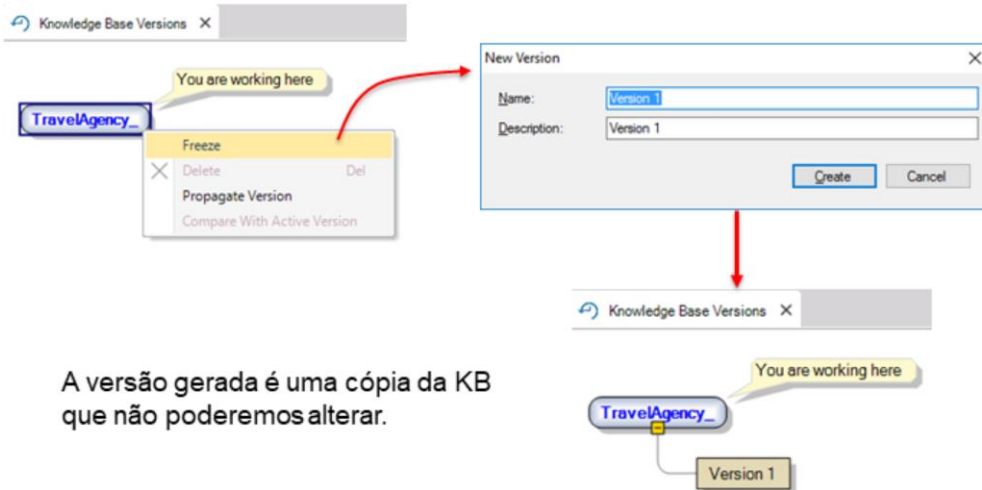
*GeneXus 16*

[ Video: <https://training.genexus.com/genexus/curso-genexus-16-nivel-analista?pt#introduccion-al-versionado>.]



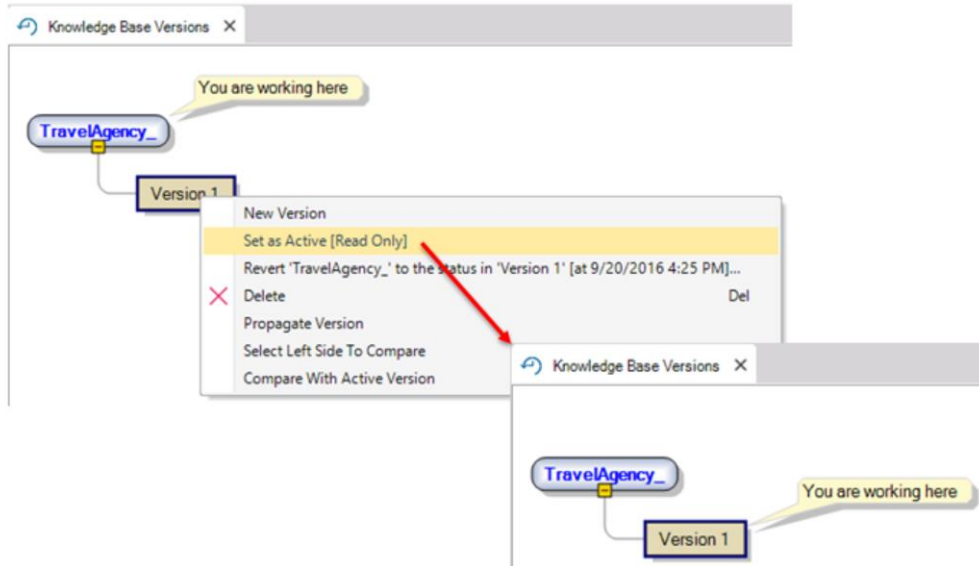
## Para obter uma versão congelada da KB...

- Clic com o botão direito sobre o nó raiz e escolhemos Freeze:

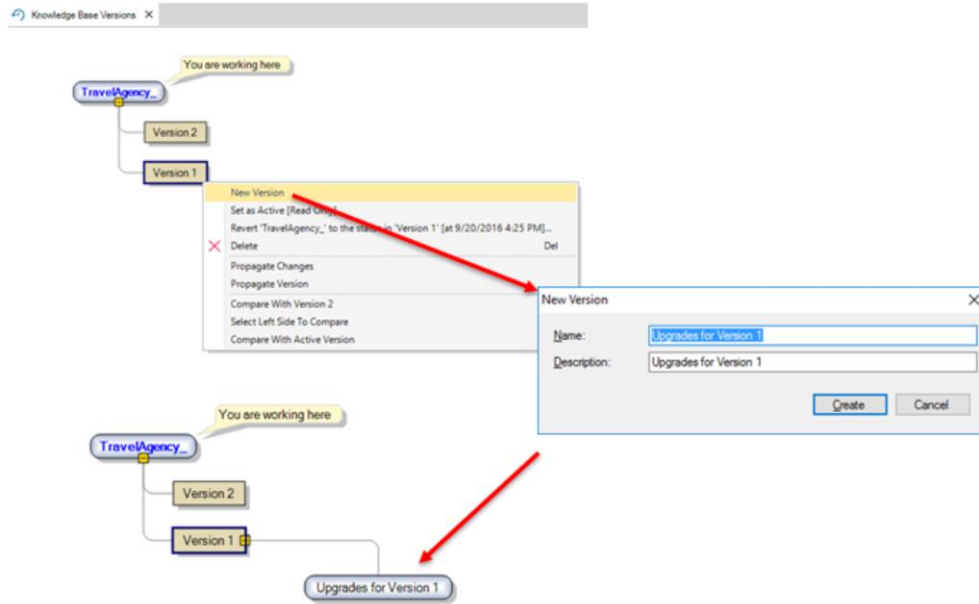


A versão gerada é uma cópia da KB que não poderemos alterar.

### Para trabalhar com a versão congelada:



### Para criar uma nova versão editável a partir de uma versão congelada:



### Para sincronizar (merge) duas versões em desenvolvimento:

The screenshot illustrates the process of merging two development versions in GeneXus. It shows a tree view with a context menu open over the 'TravelAgency' node. The 'Merge Versions' option is highlighted in yellow. A red arrow points from this option to the 'Merge Versions' tab in the top navigation bar. Below the navigation bar, the 'Merge Versions' dialog is displayed, showing the source version ('TravelAgency\_') and the target version ('Upgrades for Version 1') with a date of '8/20/2016 5:31 PM'. There are 'Analyze' and 'Merge' buttons at the bottom right of the dialog.

**Merge Versions**

Merge in  changes made to  since

using Version 1 as reference

Backup target before merge

<input checked="" type="checkbox"/>	Name	Type	Action
-------------------------------------	------	------	--------

### Para comparar duas versões:

1)

Knowledge Base Versions X

You are working here

TravelAgency...

Version 2

Version 1

- New Version
- Set as Active (Read Only)
- Revert "TravelAgency\_" to the status in "Version 1" [at 9/20/2016 4:25 PM]...
- Delete Del
- Propagate Changes
- Propagate Version
- Compare With Version 2
- Select Left Side To Compare
- Compare With Active Version

2)

Knowledge Base Versions X

You are working here

TravelAgency...

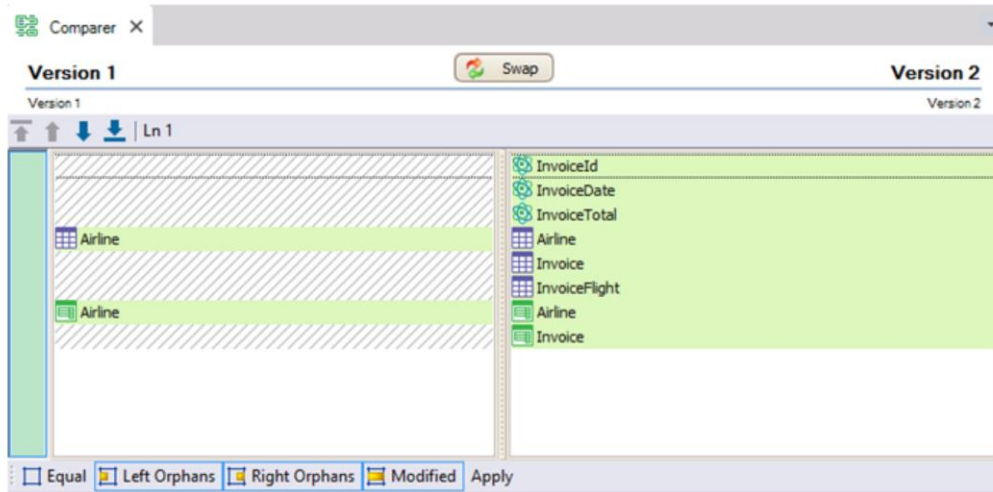
Version 2

Version

- New Version
- Set as Active (Read Only)
- Revert "TravelAgency\_" to the status in "Version 2" [at 9/20/2016 5:10 PM]...
- Delete Del
- Propagate Changes
- Propagate Version
- Compare With Version 1
- Select Left Side To Compare
- Compare With Active Version

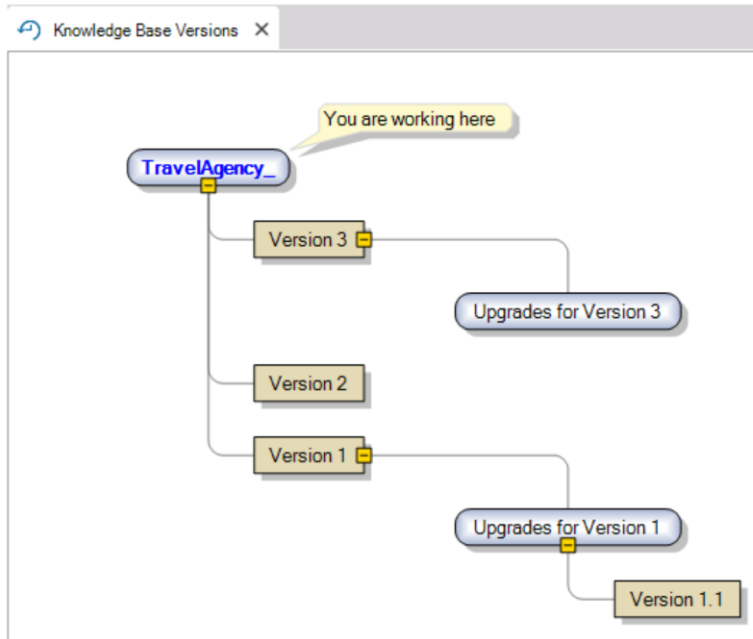
Para comparar duas versões:

3)





### Árvore de versões



Para conhecer mais sobre versionamento da Base de Conhecimento:

<http://wiki.genexus.com/commwiki/servlet/wiki?5680,Category%3AKnowledge+Base+Versions>

Podemos aprender sobre versionamento de KB na URL Wiki mostrada na tela.

# GeneXus™

Videos

[training.genexus.com](https://training.genexus.com)

Documentation

[wiki.genexus.com](https://wiki.genexus.com)

Certifications

[training.genexus.com/certifications](https://training.genexus.com/certifications)