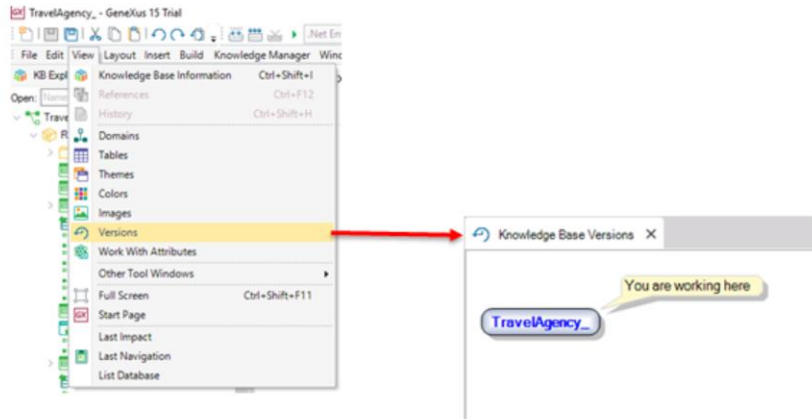
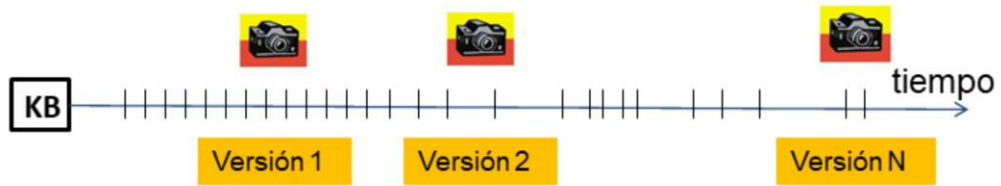


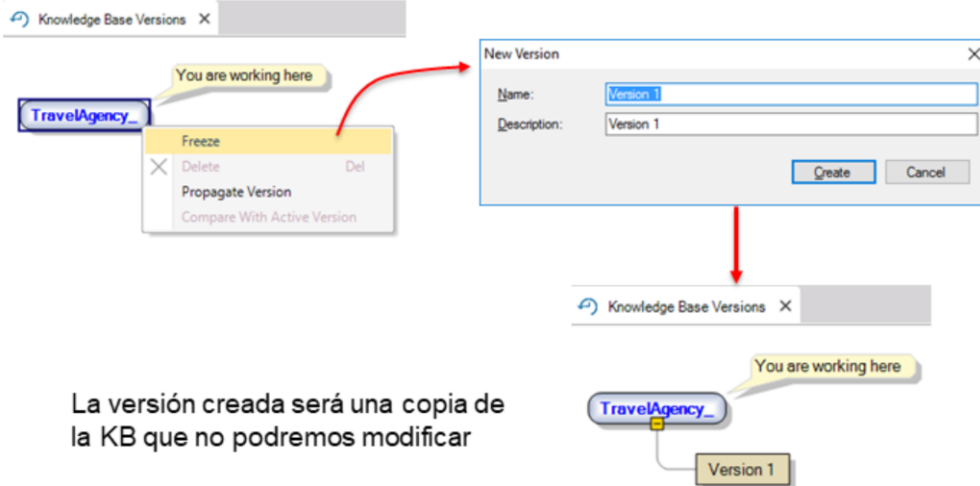
Versionado de Bases de Conocimiento

GeneXus 16

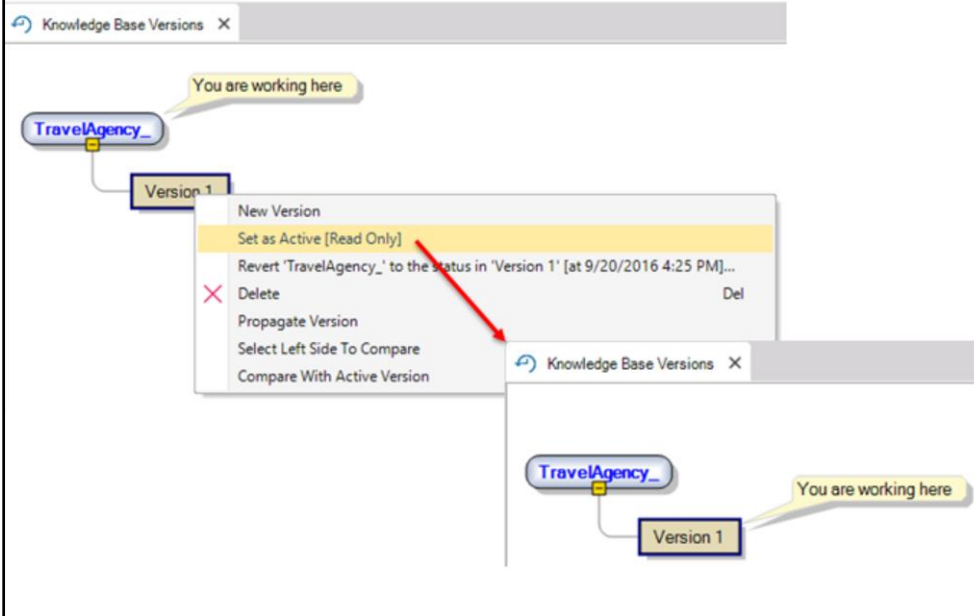


Para crear una versión congelada de la KB...

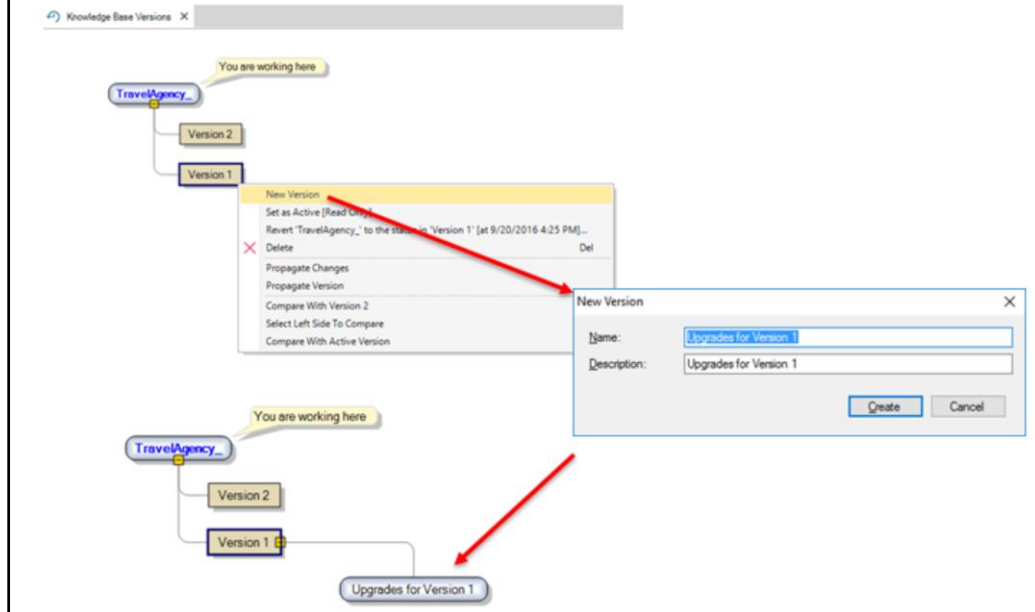
- Damos botón derecho sobre el nodo raíz y elegimos Freeze:



Para trabajar con una versión congelada:

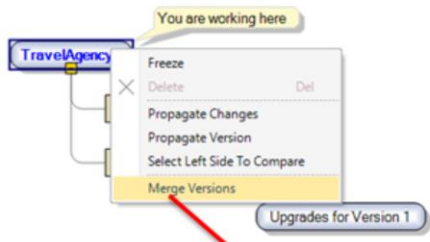


Para crear una versión modificable a partir de una versión congelada:



Para sincronizar (merge) dos versiones de desarrollo:

Knowledge Base Versions X



You are working here

Freeze
Delete
Propagate Changes
Propagate Version
Select Left Side To Compare
Merge Versions

Upgrades for Version 1

Knowledge Base Versions X Merge Versions X

Merge Versions

Merge in changes made to since

using Version 1 as reference

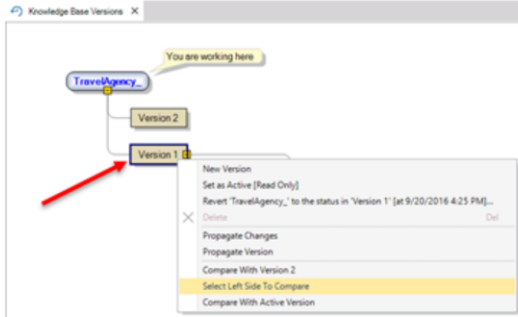
☒ Backup target before merge

Analyze Merge

<input checked="" type="checkbox"/>	Name	Type	Action
-------------------------------------	------	------	--------

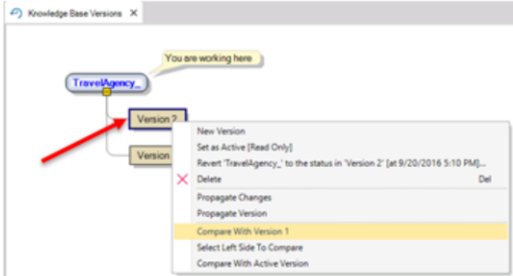
Para comparar dos versiones:

1)



The screenshot shows the 'Knowledge Base Versions' window. A tree view on the left contains 'TravelAgency...' (with a 'You are working here' label), 'Version 2', and 'Version 1'. A red arrow points to 'Version 1'. A right-click context menu is open over 'Version 1', listing the following options: 'New Version', 'Set as Active (Read Only)', 'Revert "TravelAgency..." to the status in "Version 1" (at 9/20/2016 4:25 PM)...', 'Delete', 'Propagate Changes', 'Propagate Version', 'Compare With Version 2' (highlighted), 'Select Left Side To Compare', and 'Compare With Active Version'.

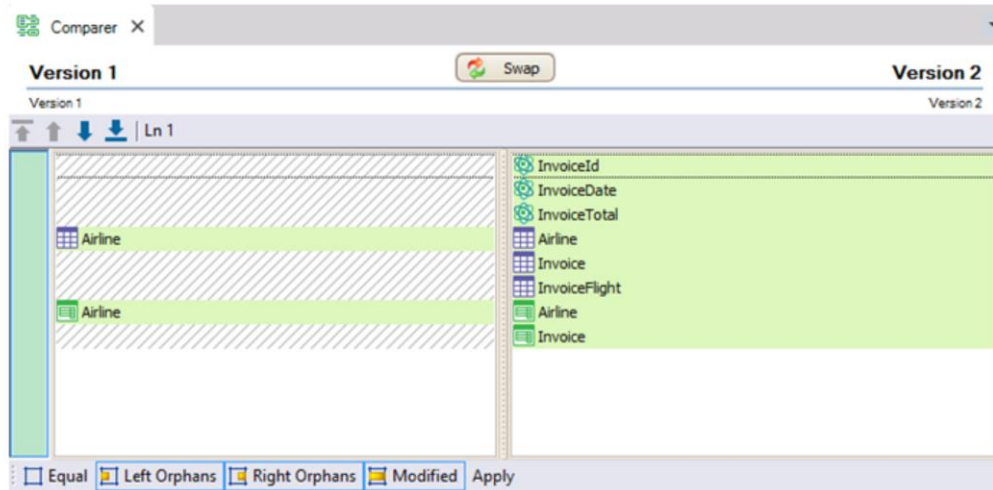
2)



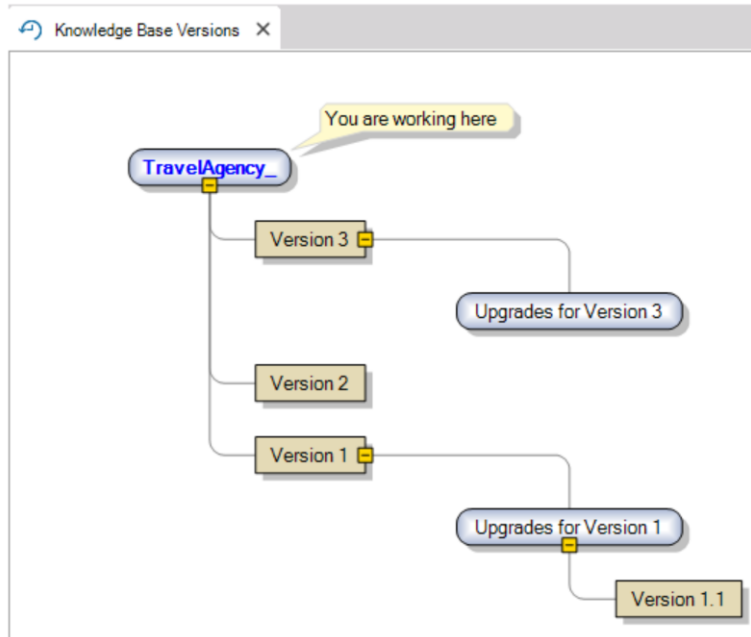
The screenshot shows the 'Knowledge Base Versions' window. A tree view on the left contains 'TravelAgency...' (with a 'You are working here' label), 'Version 2', and 'Version'. A red arrow points to 'Version 2'. A right-click context menu is open over 'Version 2', listing the following options: 'New Version', 'Set as Active (Read Only)', 'Revert "TravelAgency..." to the status in "Version 2" (at 9/20/2016 5:10 PM)...', 'Delete', 'Propagate Changes', 'Propagate Version', 'Compare With Version 1' (highlighted), 'Select Left Side To Compare', and 'Compare With Active Version'.

Para comparar dos versiones:

3)



Árbol de versiones



Para saber más sobre versionado de Bases de Conocimiento:

<http://wiki.genexus.com/commwiki/servlet/wiki?5680,Category%3AKnowledge+Base+Versions>

Podemos saber más sobre versionado de Kbs consultando la url del Wiki que se muestra en pantalla.

GeneXus™

The power of doing.

Videos

Documentation

Certifications

training.genexus.com

wiki.genexus.com

training.genexus.com/certifications