

# Installation and first run of GeneXus Trial

October 2022

## Content

Generalities .....	2
GeneXus Trial limitations .....	2
General requirements .....	2
Microsoft SQL Server.....	2
GeneXus Account .....	2
GeneXus Trial installation.....	4
Descarga de GeneXus Trial.....	4
GeneXus Trial installation.....	4
First run of GeneXus Trial.....	6
Knowledge Base creation .....	7
Transaction creation .....	7
Application run.....	8
Links of interest.....	10

## Generalities

The GeneXus Trial version allows you to get to know and explore most of the GeneXus features and functionalities, as well as to gain perspectives on the GeneXus philosophy.

### GeneXus Trial limitations

It is a fully functional version. The generators currently enabled, NetFramework and Android, are authorized with a single Site Key that expires 60 days after activation, and must be installed by a single user locally.

Other restrictions:

- A maximum of 90 attributes can be created.
- A maximum of 250 objects can be created.
- The application is generated in the cloud provided by GeneXus, so it is necessary to have access to the Internet.

## General requirements

### Microsoft SQL Server

In order to be able to create the database that stores the objects defined in the application, GeneXus needs a local instance of SQL Server.

The GeneXus Trial setup automatically installs the SQL Express LocalDB instance (if one previously installed on the computer is not detected). If the computer already has an instance of SQL Server you can use it.

### GeneXus Account

As the Trial version generates the application in the cloud provided by GeneXus, at the time of execution a GeneXus Account is required to validate access to said cloud.

If you already have a GeneXus Account, you can use it. Otherwise, you must create your GeneXus Account from [here](#).

The login form features the GeneXus logo at the top. Below it, the heading reads "Login with your GeneXus™ Account and continue to GeneXus training". There are two input fields: "User or Email\*" and "Password\*". Below the password field are two checkboxes: "Show password" and "Keep me signed in". A link "Forgot your password?" is positioned to the left of a red "Login" button. At the bottom, there is a link "If you don't have a GeneXus Account, register here" and a language selector set to "English".

Complete the data required for the creation of the Account:

The create account form features the GeneXus logo at the top. Below it, the heading reads "Create your GeneXus Account to use all our services and continue to GeneXus training". A link "Already have an Account? Sign In" is present. The form includes several input fields: "First Name\*", "Last name\*", "Location\*" (a dropdown menu with "Select country"), "E-mail\*" (containing "mail@example.com"), "Password\*", and "Confirm password\*". There is a "Show password" checkbox. At the bottom, there is a text box stating "By clicking on the Create Account button, I accept the Privacy Terms and Conditions" and a red "Create account" button.

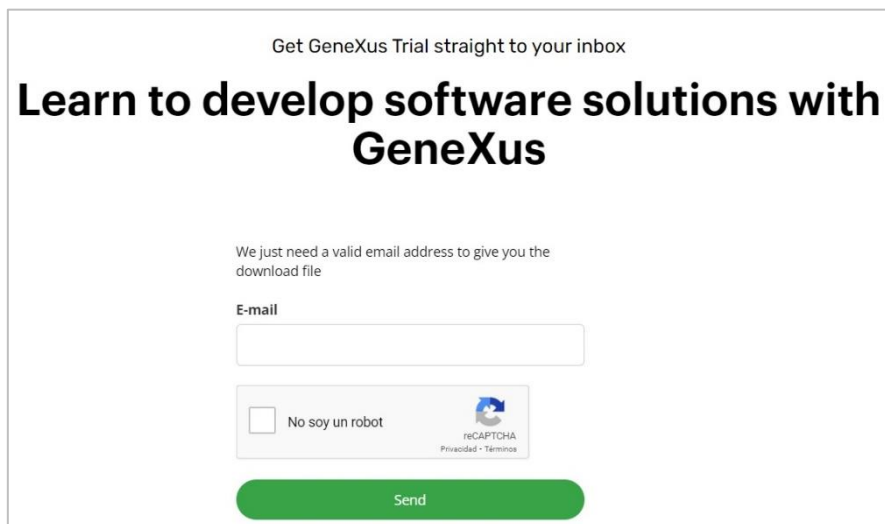
Always remember the indicated email and password since you must use them when executing your application in the GeneXus cloud.

## GeneXus Trial installation

The first step is to download the GeneXus Trial version

### Descarga de GeneXus Trial

You can download from [here](#).



Get GeneXus Trial straight to your inbox

## Learn to develop software solutions with GeneXus

We just need a valid email address to give you the download file

E-mail

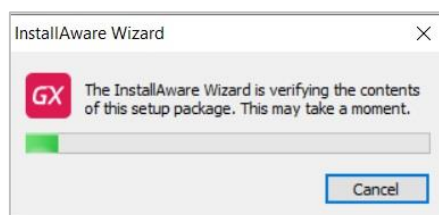
No soy un robot

reCAPTCHA  
Privacidad · Términos

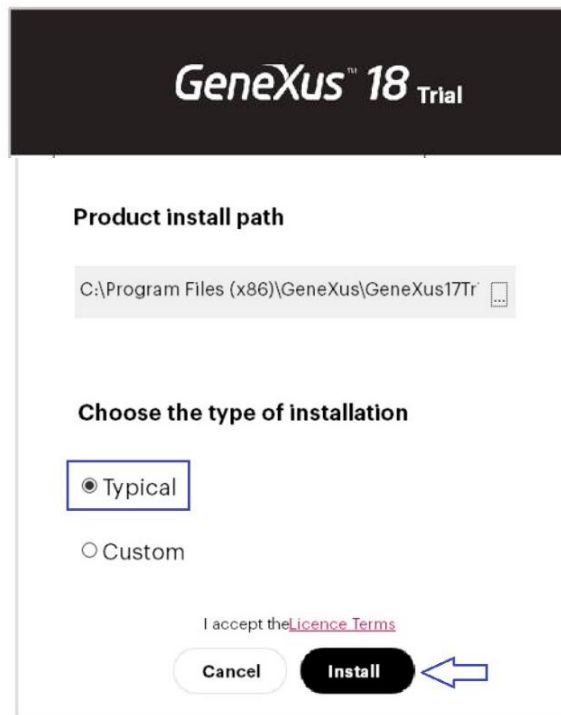
Send

### GeneXus Trial installation

After the download is complete, run the GeneXus installation file (note that you must have Administrator permissions and full control over the installation destination folder):

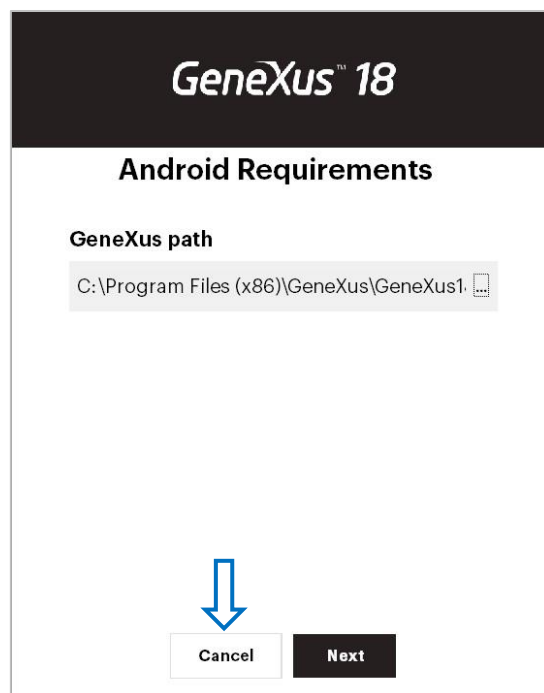


Once the contents of the Setup have been verified, select the **Typical** installation type, and press **Install**:

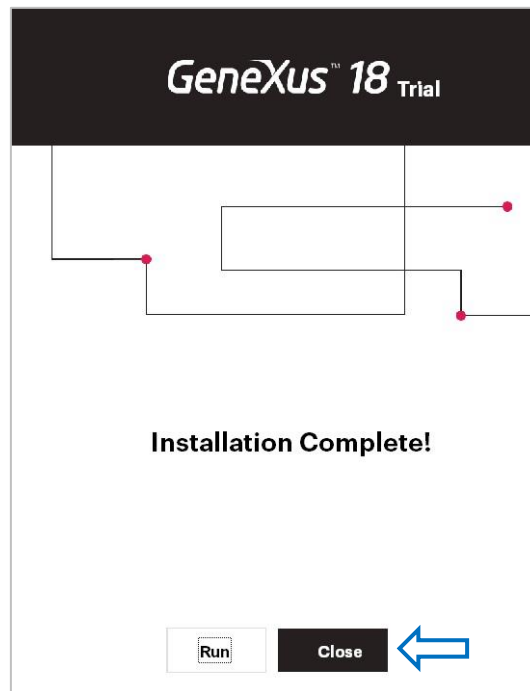


Wait until the installation process is complete.

Once finished, it will offer to install the Android SDK. Skip it by pressing Cancel, as you will install it later when this topic is studied in your course.



Finish the installation. Select **Close**:



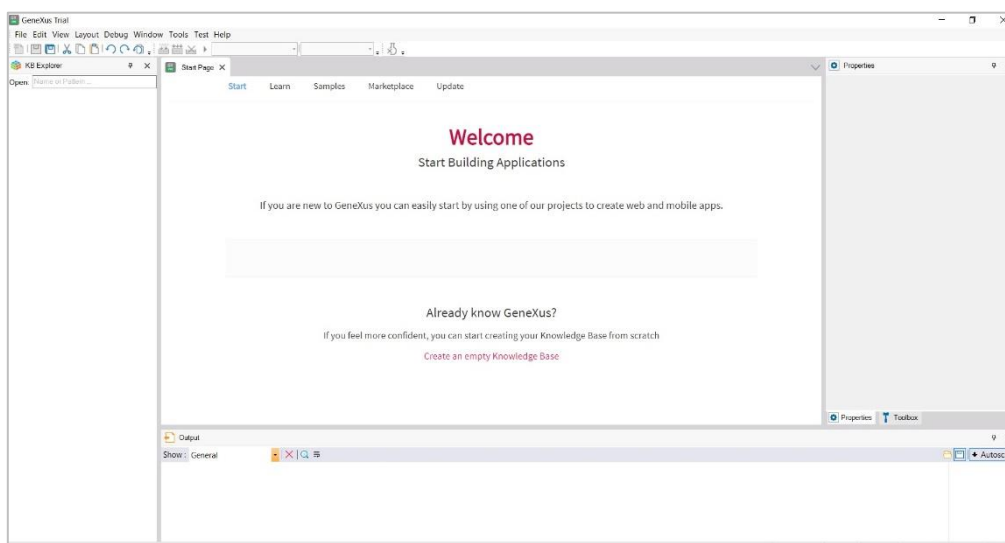
At this point you can start working with GeneXus. If you want to verify that everything is working properly, try the following steps.

## First run of GeneXus Trial

Look for the GeneXus Trial icon on your desktop and run it.



You will see the following screen, which corresponds to the GeneXus IDE



## Knowledge Base creation

The first step is to create a Knowledge Base: File / New / Knowledge Base.

In the following box, indicate the name of the Knowledge Base, for example, MyFirstKB:

New Knowledge Base

Name: MyFirstKB

Location: C:\KBs

Basic Advanced

Prototyping Target: GeneXus Prototyping Cloud

User Interface Language: English

Back end

Prototyping Environment: .NET

Data Source: (Default)

Front end

Web (.NET)

Android

Apple

Web (Angular)

Create Cancel

Press Create. The creation process will begin:



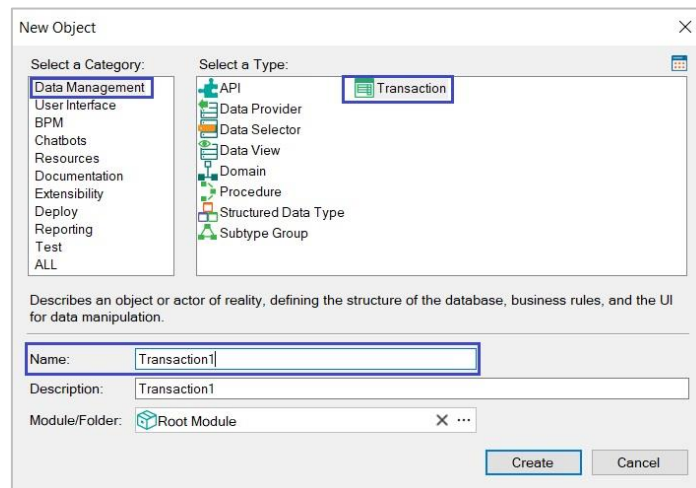
Once finished, you can create the first GeneXus object.

## Transaction creation

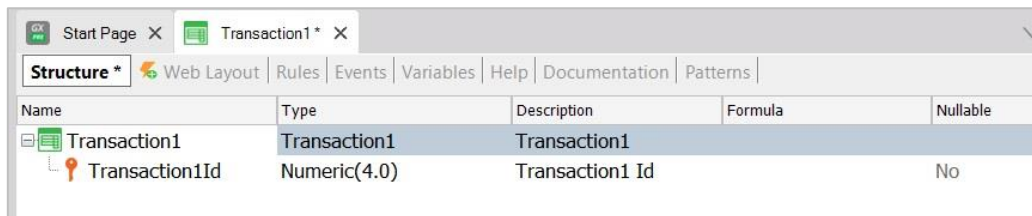
From the File menu, select New / Object

Select the type of Transaction object and leave the name that appears by default:





Press Enter, and define the attribute name Transaction1Id, as shown:



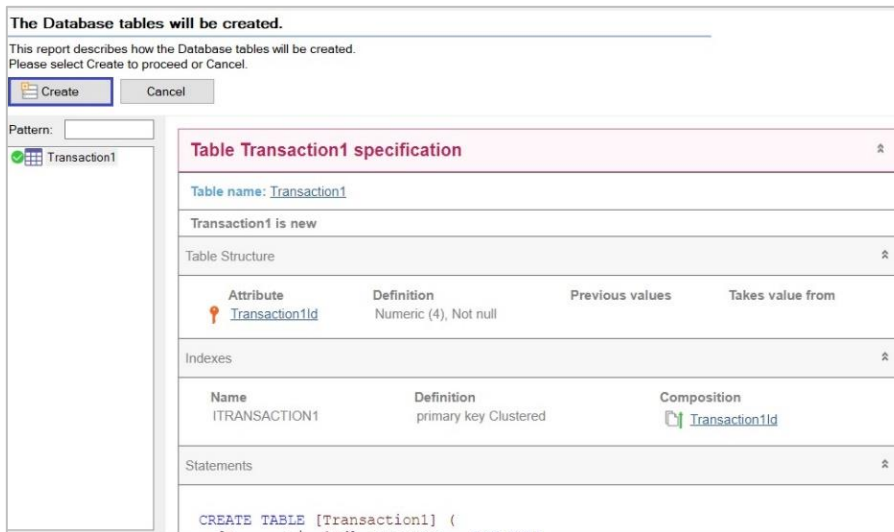
## Application run

To run the application, press the **F5** key. You will see a box like the one below, requesting the identification of your GeneXus Account.

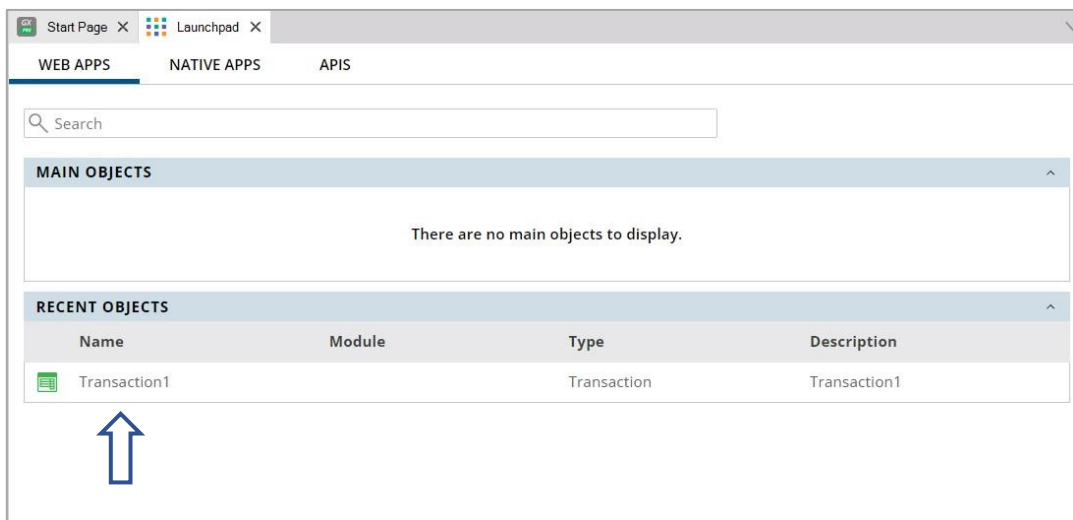
Indicate email and password. Press **Sign In**



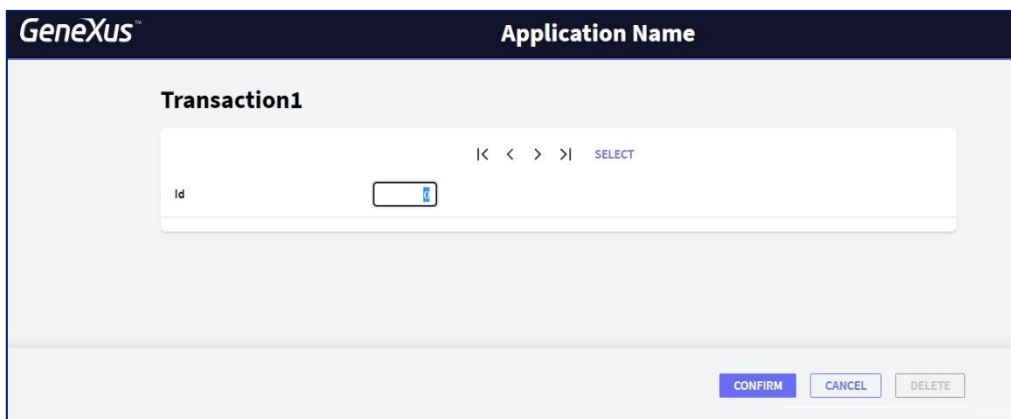
In the next box press **Create**:



Once the process is finished, you will see the following launchpad:



Click on Transaction1 and you will see the following:



With this, it has proven that GeneXus was able to create the database and all the necessary programs to access it. It has also verified that GeneXus has created the Web application correctly.

If you were able to successfully complete all the test steps detailed in this document, you are ready to use GeneXus for your training.

We suggest you visit the links below and any inconvenience, please send an email to [training@genexus.com](mailto:training@genexus.com).

### Links of interest

- [GeneXus documentation wiki](#)
- [GeneXus Training Site](#)