

Integration and Customization of the GXflow Standard Client

GeneXus BPM Suite Course

GeneXusTM 18

Marzo 2023

Copyright ©GeneXus. 1988-2020.

All rights reserved. This document may not be reproduced by any means without the express permission of GeneXus. The information contained herein is intended for personal use only.

Registered Trademarks:

GeneXus is a trademark or registered trademark of GeneXus. All other trademarks mentioned herein are the property of their respective owners.



INTRODUCTION 3

GXFLOW ENTRY POINT 3

GXFLOW CUSTOM CLIENT 5



INTRODUCTION

GXflow Standard Client is an application that allows users to access GXFlow Inbox, Outbox, My Processes, My Performance, and other applications called 'components'.

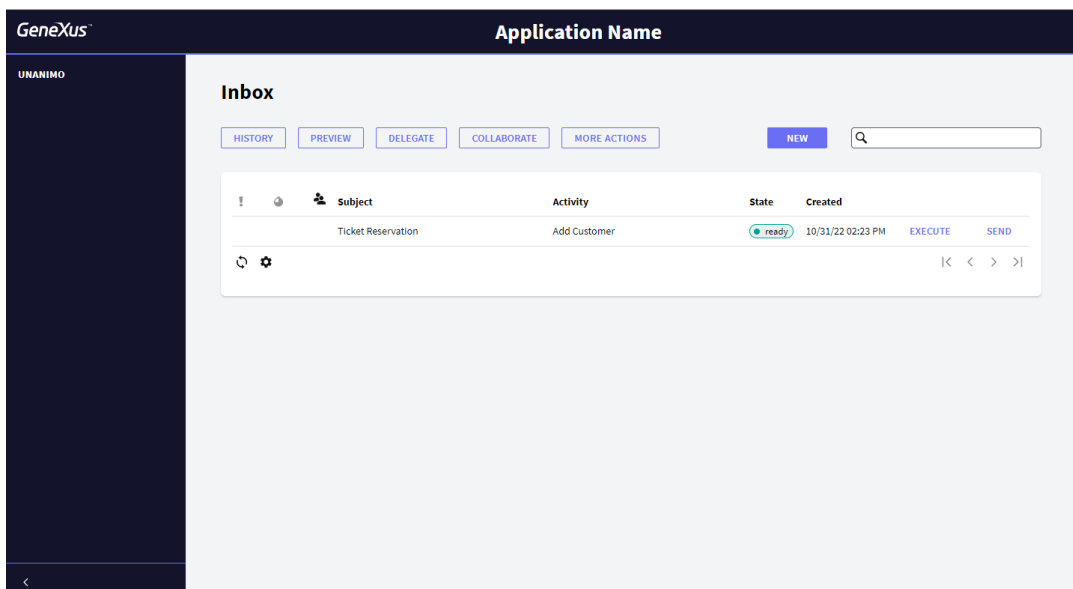
These components allow users to interact with the workflow engine to create, execute, and/or submit BPD tasks. However, sometimes it is necessary to access these components from another generated application or a custom client is required.

GXFLOW ENTRY POINT

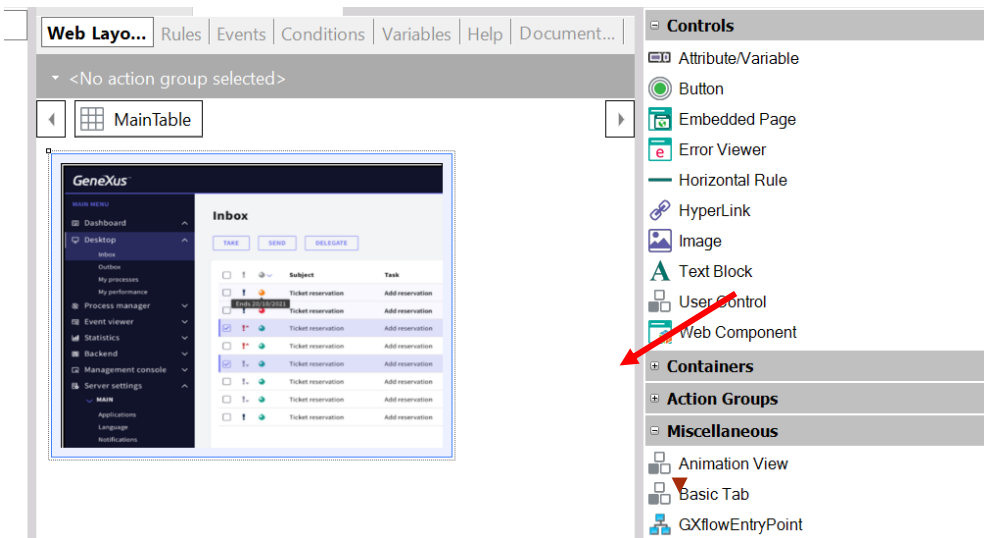
To integrate GXflow components in a GeneXus application, GXflow Entry Point must be used. It is a user control distributed with GeneXus that can be found in the GeneXus installation folder in: /Packages/Gxpm/Extra/GXflowEntryPoint.

It allows us to embed any of the GXflow components (Inbox, Outbox, History, etc.) within any other generated application.

It is installed in a similar way as the rest of the GeneXus user controls.

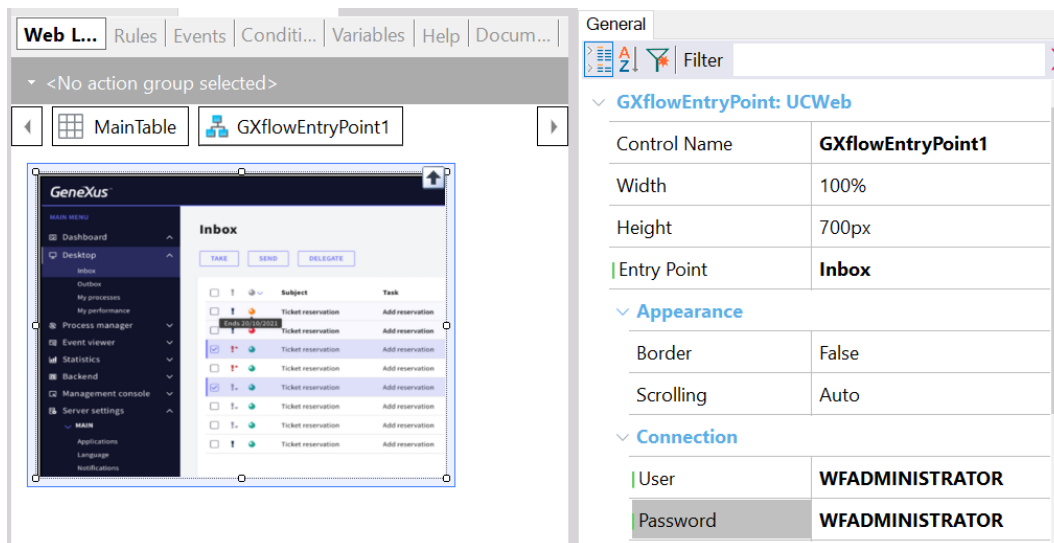


To use the control, create a Web Panel and drag the control from the Toolbox to its form.



Next, configure the following properties:

- Entry Point (Inbox, Outbox, History, Tasks, etc.)
- User
- Password



Lastly, run the application.

For more details on this control, you can visit the wiki.

<http://wiki.genexus.com/commwiki/servlet/wiki?10721>

GXFLOW CUSTOM CLIENT

It is a set of objects that use the GXflow API and implement the GXflow client.

It is an open KB , meaning that the user can consolidate it and make changes to the client regarding appearance and behavior.

Steps to build and run

1. Create a new KB from server:

GXserver: <https://samples.genexusserver.com/v18>

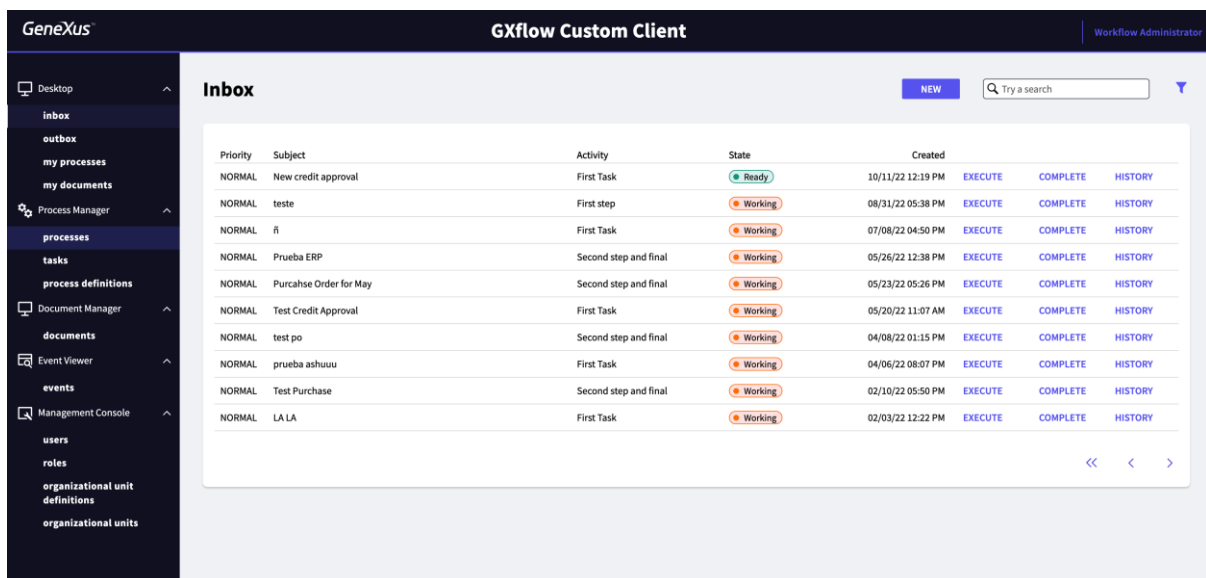
KB: GXflowWebCustomClient

Version: Stable

2. Rebuild All

3. Execute any of the Business Process Diagram in TestingProcesses folder

4. Execute the WorkflowSignin main to see in action the custom client.



To learn more about the GXflow Custom Client, visit the following wiki link:

<https://wiki.genexus.com/commwiki/servlet/wiki?48897,KB%3AGXflow+Web+Custom+Client+base+d+on+Unanimo+design+system>

