



Installation of **GeneXus Full**

July 2022

Content

Generalities	2
General requirements	2
Microsoft SQL Server	2
GeneXus installation.....	4
GeneXus download	4
GeneXus installation.....	5
GeneXus Full license authorization	7
Environment configuration	10
Components installation	10
URL Rewrite Module	11
Frequently asked questions (FAQ)	11

Generalities

The Full version of GeneXus allows you to work with various generators and DBMS. For the practical case to be developed, you will use the DBMS SQL Server and the .Net generator.

General requirements

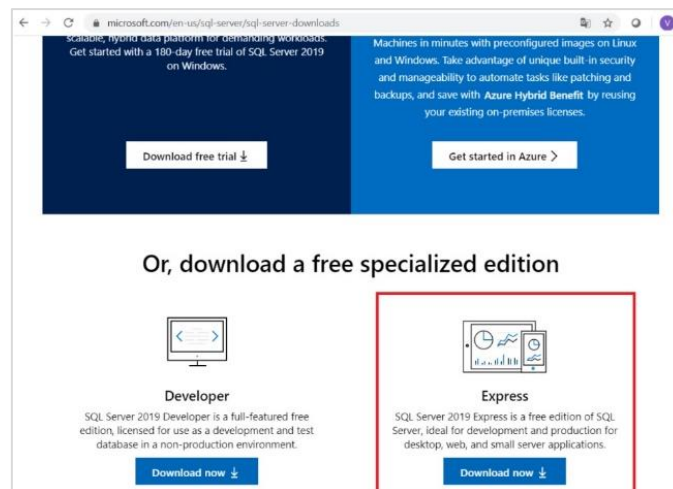
Before installing GeneXus Learning, make sure you comply with all [hardware and software requirements](#).

Microsoft SQL Server

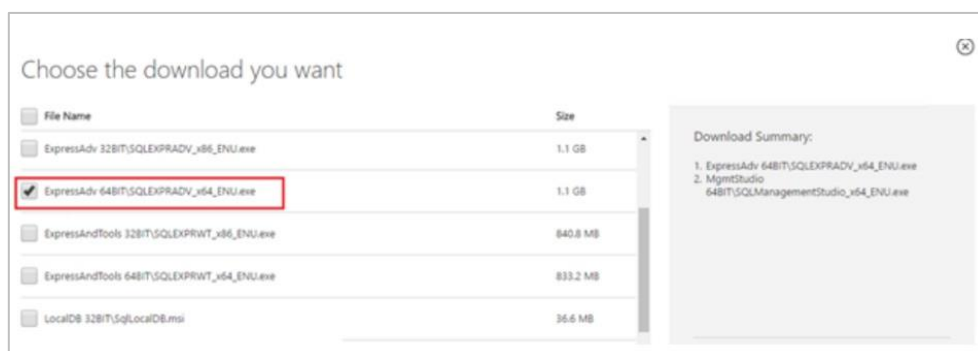
In order to be able to create the database that stores the objects defined in the application, GeneXus needs a local instance of SQL Server.

Microsoft SQL Server 2012 or higher is supported, be it Express, Standard or any other edition. You can access the Microsoft SQL Server Express (free version) page to download:

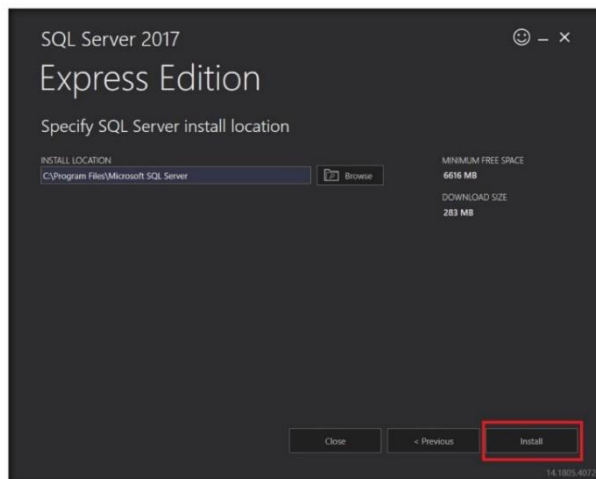
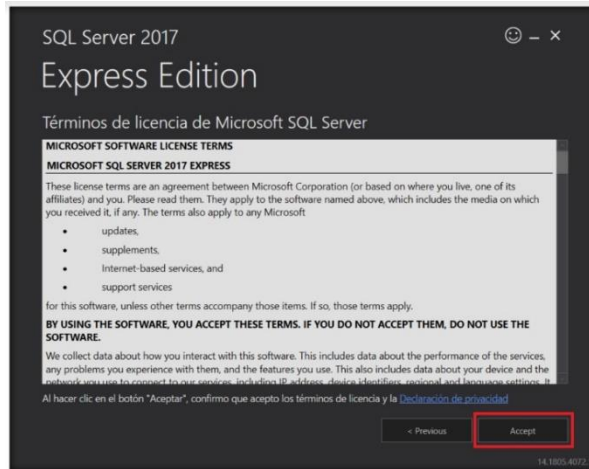
<https://www.microsoft.com/es-es/sql-server/sql-server-downloads>



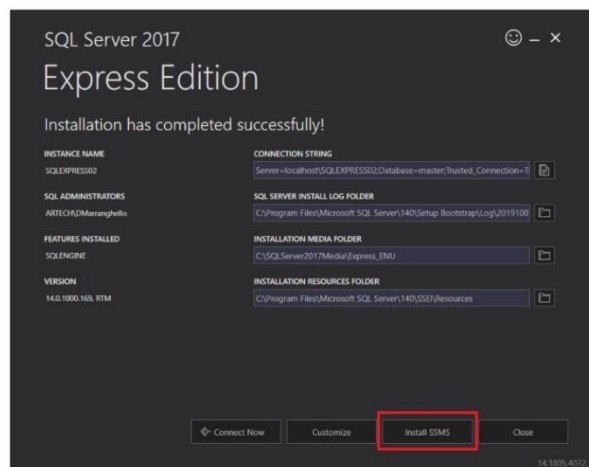
You must select the version corresponding to your operating system (32 or 64 bits).



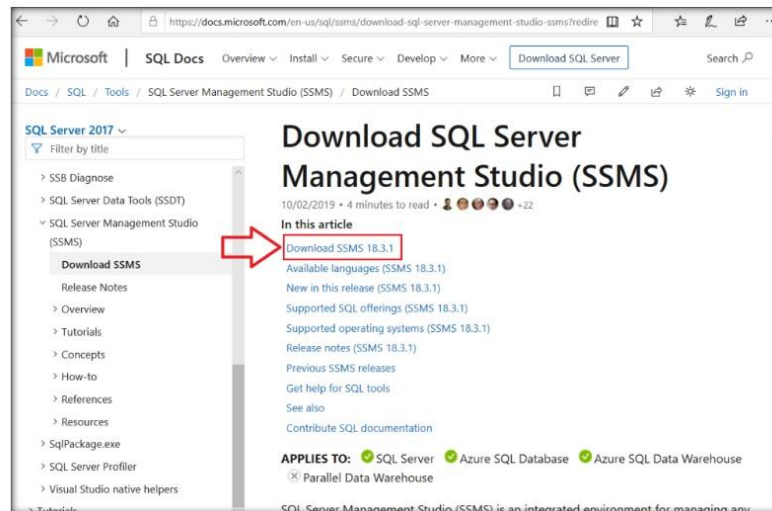
Below are the most important screens in the installation process. The rest must be left with the default values.



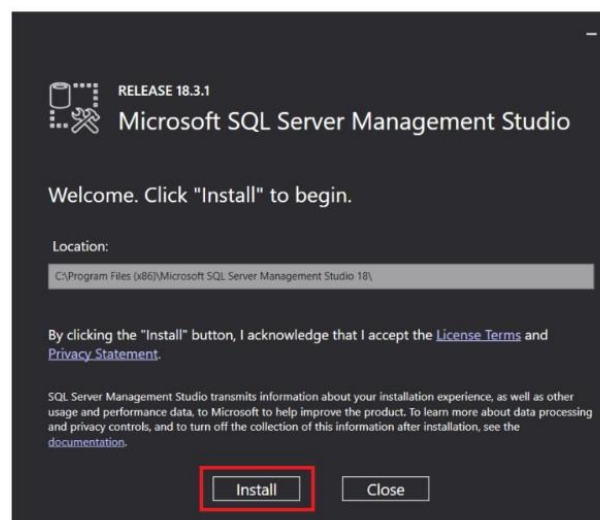
Once the installation is complete, go to **Install SSMS** to download SQL Server Management Studio, which you will need to be able to manage the databases of your applications



It will take you to the screen below, where you have to download the latest version of SSMS.



Next, execute the downloaded file and the program will be installed automatically.



GeneXus installation

The first step is to download the GeneXus Full version.

GeneXus download

You can download from [here](#).

Note: We always recommend downloading the latest released version upgrade.

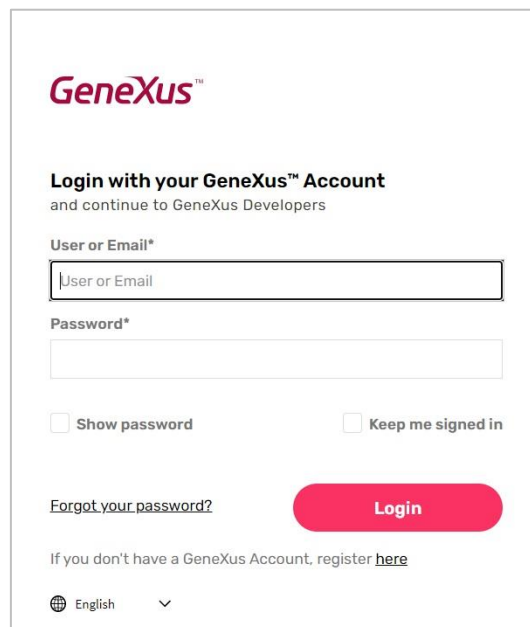
GeneXus 17 Upgrade #9 (Build #159740)

This download contains the setup of GeneXus 17. See Release Notes [here](#). See more information about GeneXus 17, [here](#).

DOWNLOADS

GeneXus 17 Upgrade 9 Last Update - 04/28/22 1,510,901 kb - Download	GAM Deploy Tool 17 Upgrade 9 Last Update - 04/28/22 27,281 kb - Download	GAM Platforms 17 Upgrade 9 Last Update - 04/28/22 2,432 kb - Download
GeneXus Platform SDK 17 Upgrade 9 Last Update - 04/28/22 12,995 kb - Download	GeneXus Report Editor 17 Upgrade 9 Last Update - 04/28/22 72,423 kb - Download	GeneXus Theme Editor 17 Upgrade 9 Last Update - 04/28/22 72,256 kb - Download

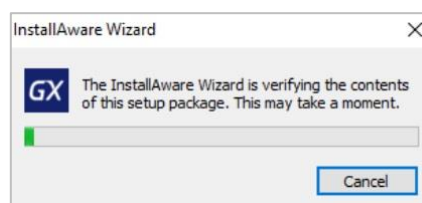
In order to download, you must authenticate with your GeneXus account:



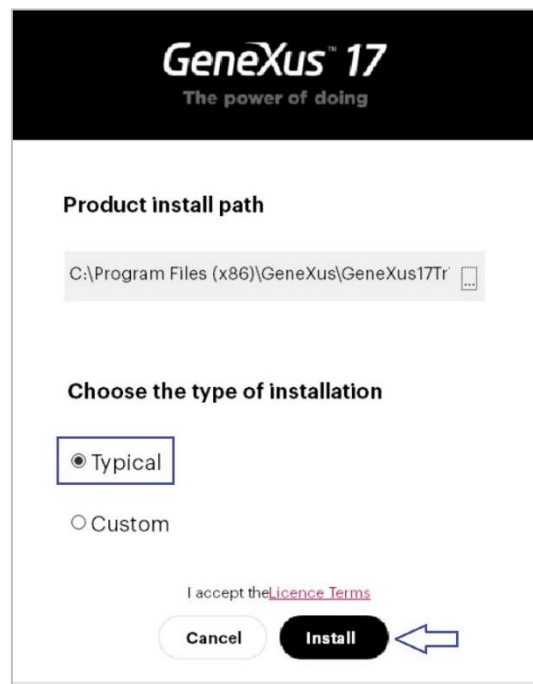
The image shows a login form for GeneXus. At the top is the GeneXus logo. Below it is the heading "Login with your GeneXus™ Account" and the subtext "and continue to GeneXus Developers". There are two input fields: "User or Email*" and "Password*". Below the password field are two checkboxes: "Show password" and "Keep me signed in". There is a link "Forgot your password?" and a red "Login" button. At the bottom, there is a link "If you don't have a GeneXus Account, register [here](#)" and a language selector showing "English" with a dropdown arrow.

GeneXus installation

After the download is complete, run the GeneXus installation file (note that you must have Administrator permissions and full control over the installation destination folder):



Once the contents of the Setup have been verified, select the **Typical** installation type, and press **Install**:

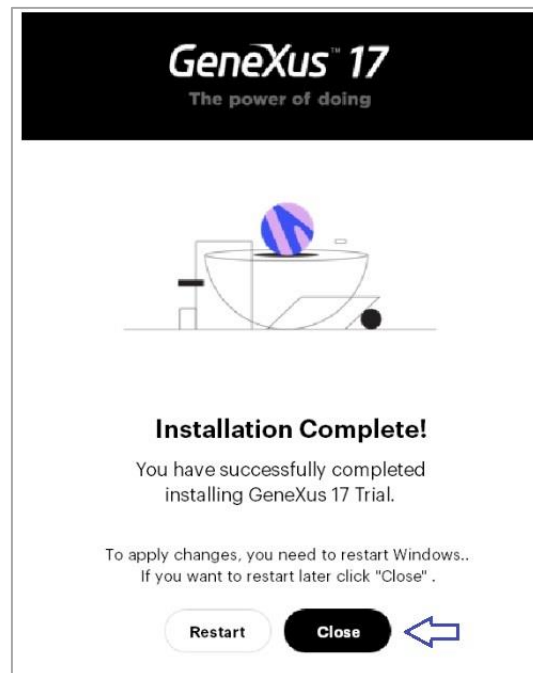


Wait until the installation process is complete.

Once finished, it will offer to install the Android SDK. Skip it by pressing Cancel, as you will install it later when this topic is studied in your course.

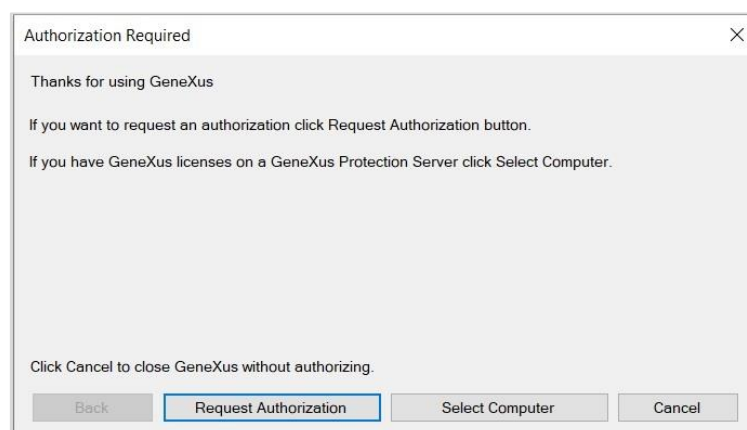


Finish the installation. Select **Close**:



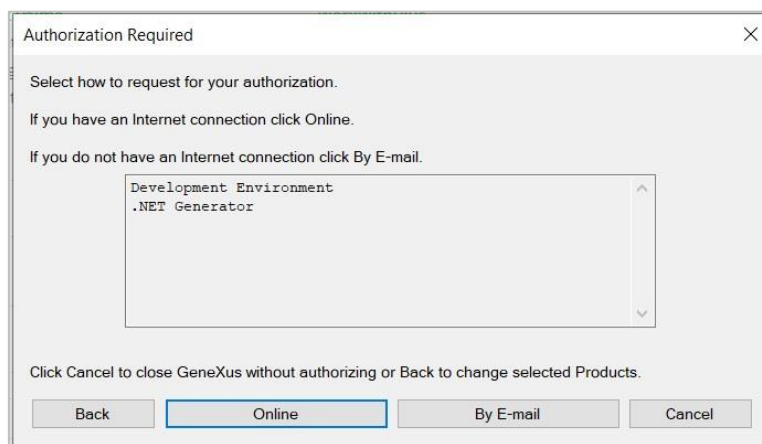
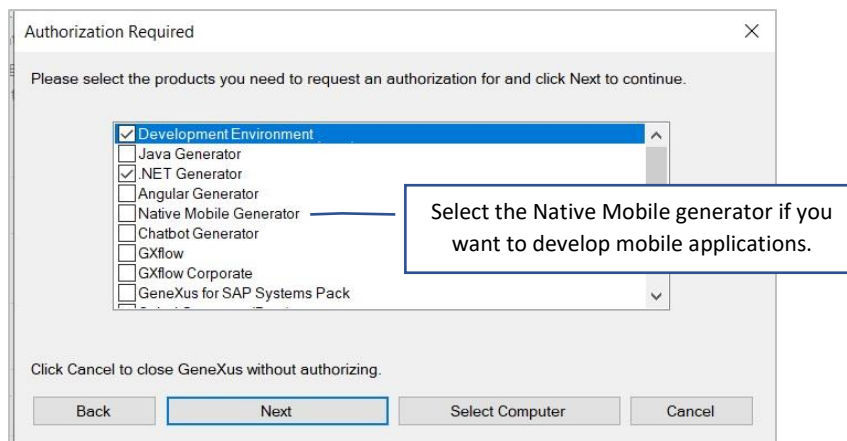
GeneXus Full license authorization

Look for the GeneXus icon and run it. When doing it for the first time, the following window will appear. To request authorization of a license you must select **Request Authorization**

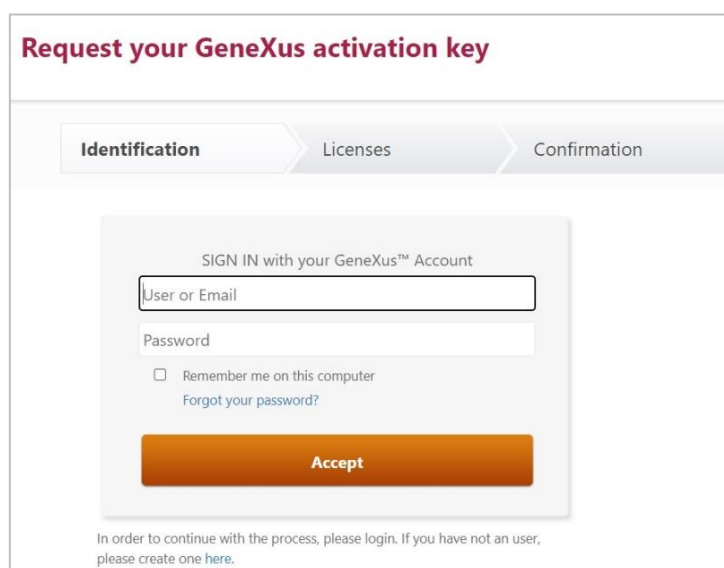


Select the products you will authorize:

- The Development Environment must always be selected because it is the GeneXus IDE license.
- In addition, you will select the generators in which you are going to develop, in this case .NET



Then the browser will open with the GeneXus web page to authorize licenses, where you must log in with your GeneXus Account:



The next screen shows the products you have requested. In the #Days field, indicate the number of days for which you requested the license:

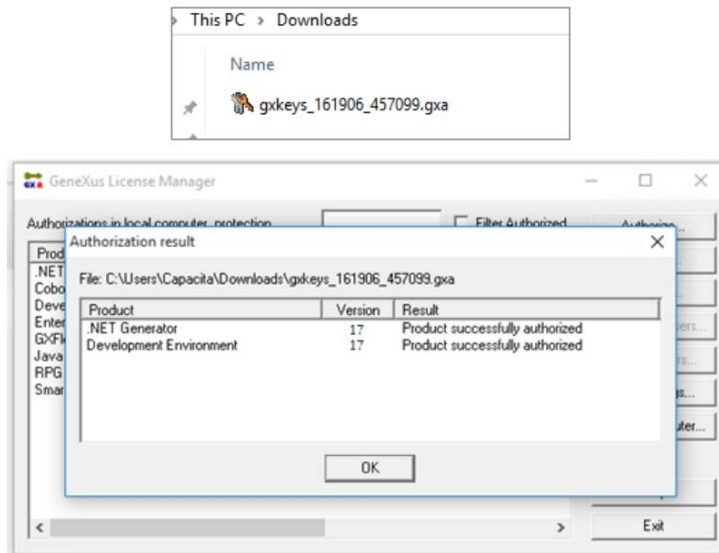
The screenshot shows the 'Licenses' step in the installation wizard. It features a table titled 'Licenses contracted by GENEXUS S.A.' with the following data:

Product	Version	Type	#Users	Time Restriction	#Days	Start	End	Notes
<input checked="" type="checkbox"/> Gen .NET	V17	New Authorization	1	Limited	63	10/30/20	01/01/21	Activation keys will be sent automatically
<input checked="" type="checkbox"/> Dev.Env. Standard Ed	V17	New Authorization	1	Limited	63	10/30/20	01/01/21	Activation keys will be sent automatically

Below the table is a text box labeled 'Would you like to add information?' and an orange 'Finish' button.

Once GeneXus authorizes the license, an email is sent to the person who requested it with an attached ".gxa" file containing the licenses.

It is enough to execute this file for GeneXus to be authorized.



GeneXus allows two forms of prototyping, local or in the cloud.

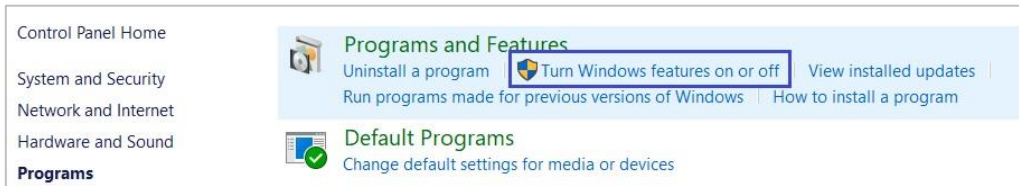
- Prototyping in the cloud: You only need to have GeneXus and SQL Server installed.
- Local Prototyping: To prototype locally you must install the components listed below.

Environment configuration

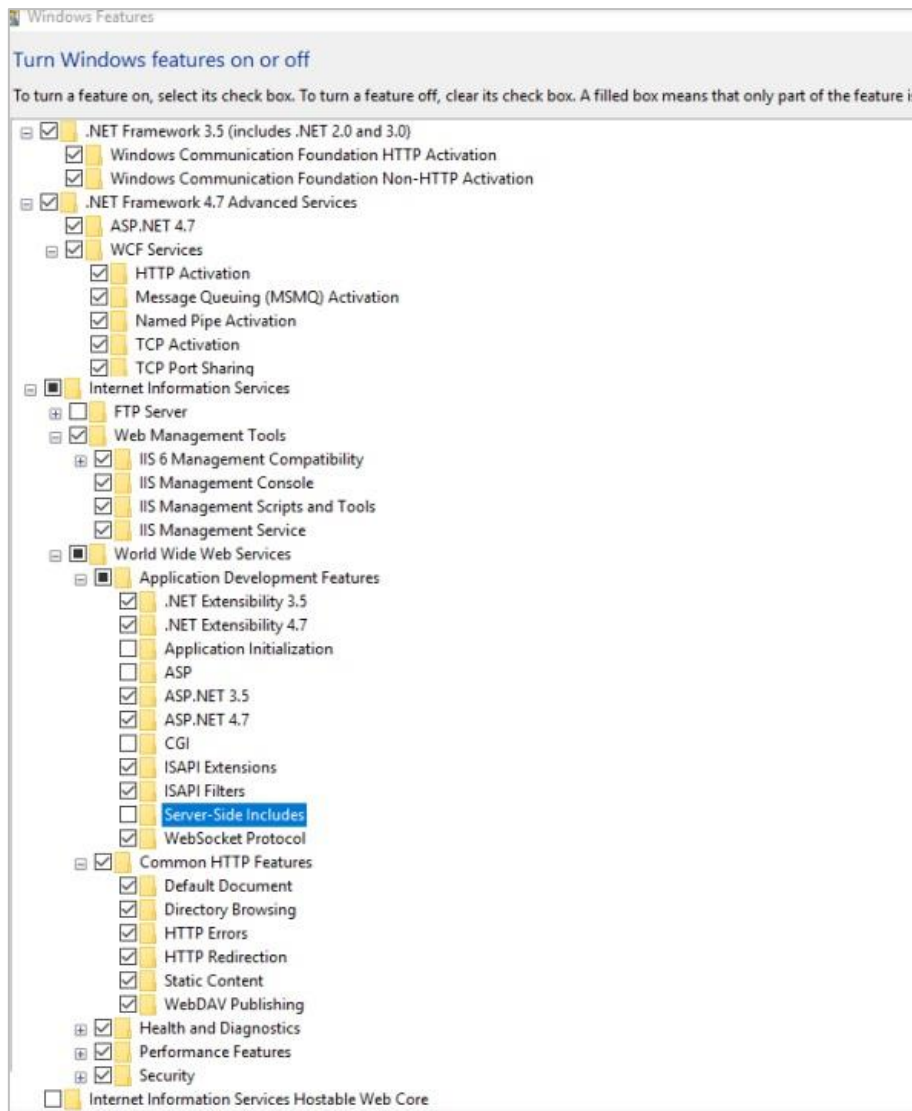
To prototype locally, you must install the components listed below.

Components installation

From Control Panel / Programs / Programs and Features:



Select everything that appears in the following image:



URL Rewrite Module

Download and install the [URL Rewrite Module](#).



Frequently asked questions (FAQ)

To access the most common errors that can occur during the installation of the product or during the first run, go to the [GeneXus FAQ](#) section found in your course information on the Training site.