



# Installation of **GeneXus** Learning

July 2022

## Content

Generalities .....	2
GeneXus Learning limitations .....	2
General requirements .....	2
Microsoft SQL Server.....	2
Installing GeneXus Learning .....	5
GeneXus Trial download .....	5
GeneXus Trial installation.....	6
GeneXus Learning authorization .....	8
Environment configuration .....	11
Components installation .....	11
URL Rewrite Module .....	12
Frequently asked questions (FAQ) .....	13

## Generalities

GeneXus Learning allows you to learn about and explore most of the GeneXus features and functionalities, as well as to gain perspectives on the GeneXus philosophy.

## GeneXus Learning limitations

It is a fully functional version. The currently enabled generators, NetFramework and Android, are authorized with a single Site Key, and must be installed by a single user locally. The duration of it will be subject to the type of training you are taking.

Other restrictions:

- A maximum of 90 attributes can be created.
- A maximum of 250 objects can be created.
- The application can be prototyped both in the cloud provided by GeneXus and locally. Local prototyping requires the installation of certain components

## General requirements

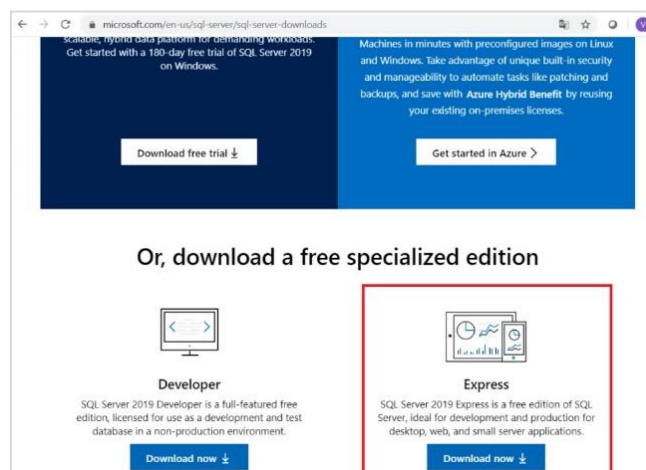
Before installing GeneXus Learning, make sure you comply with all [hardware and software requirements](#).

## Microsoft SQL Server

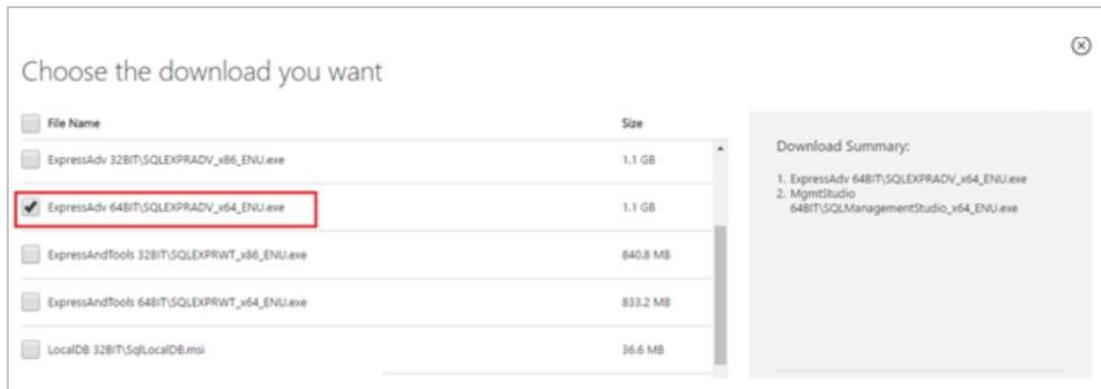
In order to be able to create the database that stores the objects defined in the application, GeneXus needs a local instance of SQL Server.

Microsoft SQL Server 2012 or higher is supported, be it Express, Standard or any other edition. You can access the Microsoft SQL Server Express (free version) page to download:

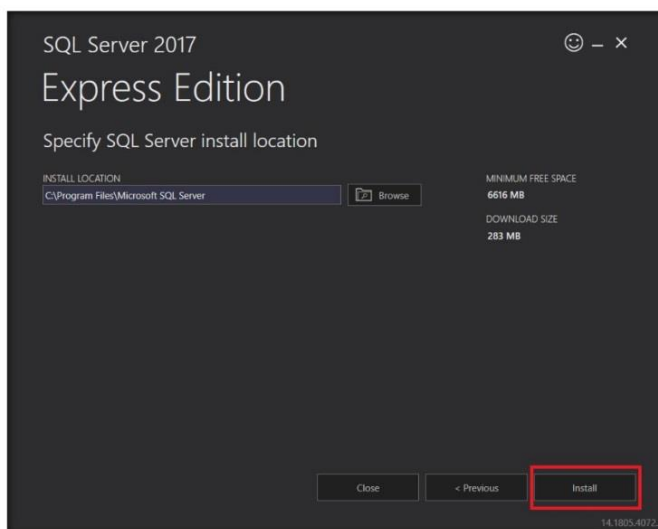
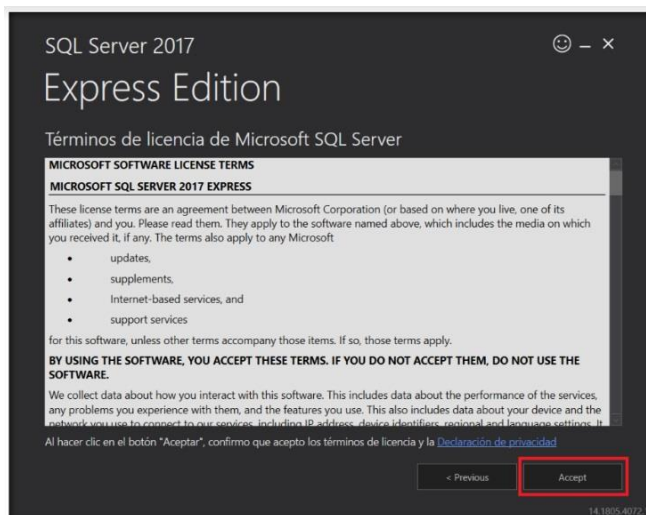
<https://www.microsoft.com/es-es/sql-server/sql-server-downloads>



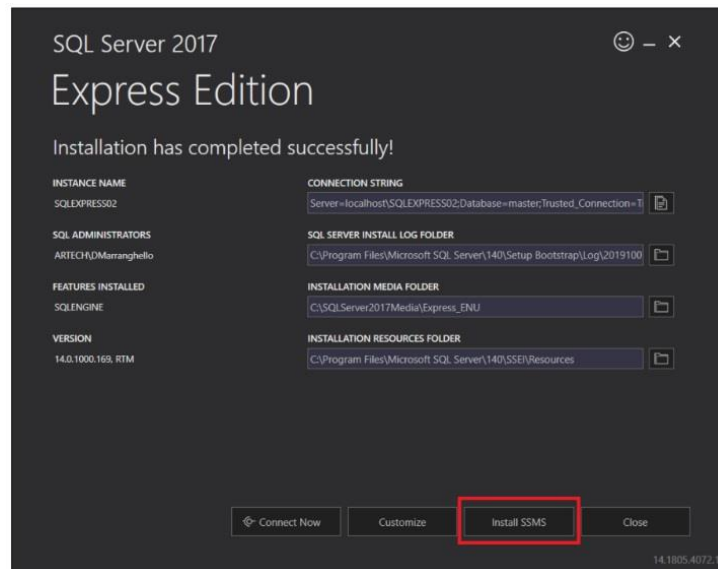
You must select the version corresponding to your operating system (32 or 64 bits).



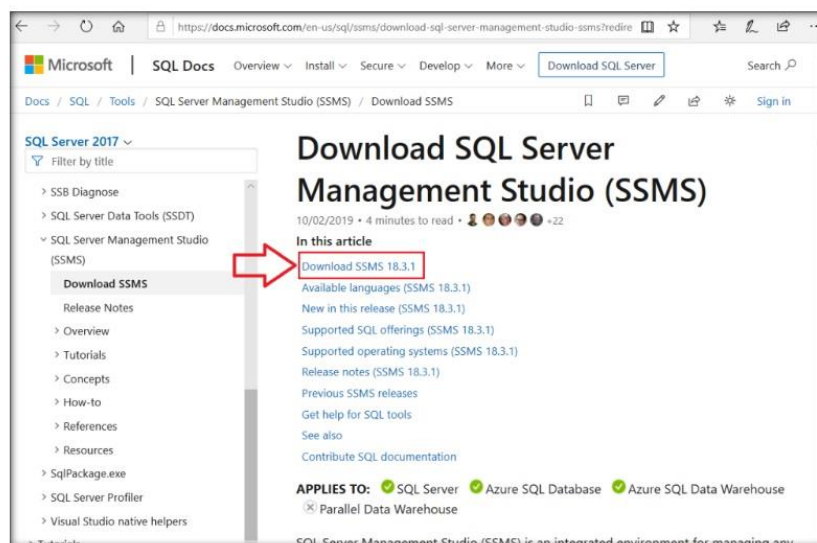
Below are the most important screens in the installation process. The rest must be left with the default values.



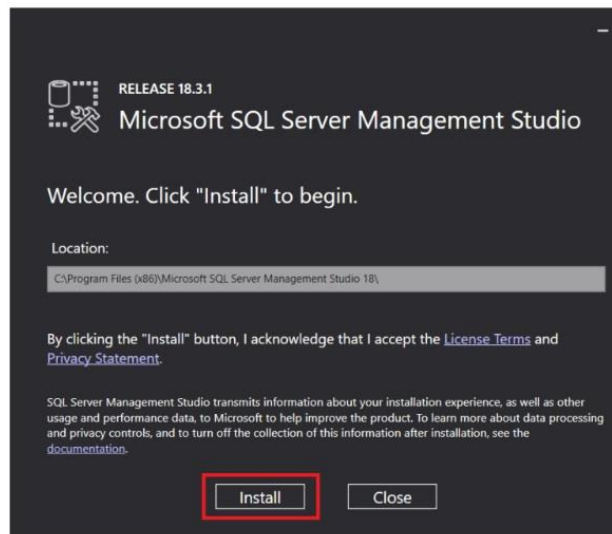
Once the installation is complete, go to **Install SSMS** to download SQL Server Management Studio, which you will need to be able to manage the databases of your applications



It will take you to the screen below, where you have to download the latest version of SSMS.



Next, execute the downloaded file and the program will be installed automatically.



## Installing GeneXus Learning

The first step is to download the GeneXus Trial version.

### GeneXus Trial download

You can download from [here](#).

Get GeneXus Trial straight to your inbox

## Learn to develop software solutions with GeneXus

We just need a valid email address to give you the download file

E-mail

No soy un robot

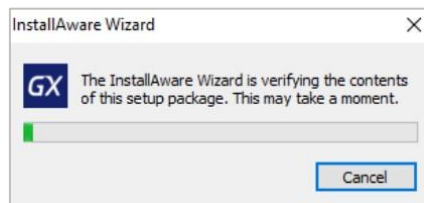
reCAPTCHA  
Privacidad · Términos

Send

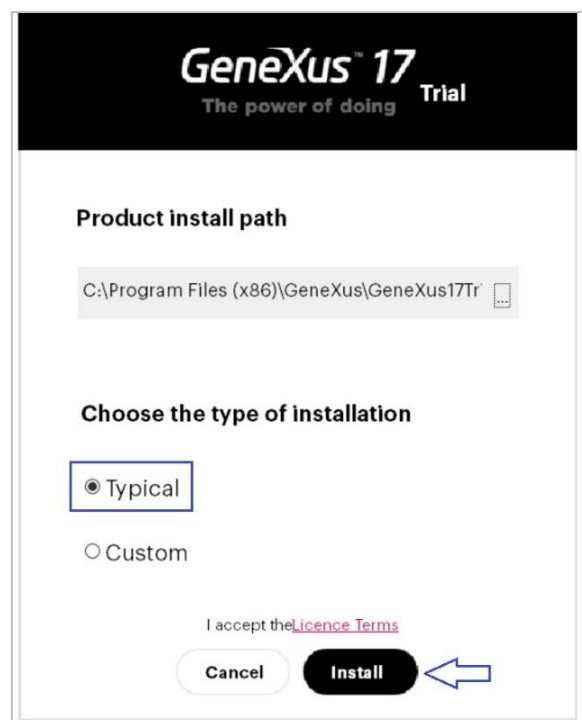
Complete the requested data. You will receive in your email the link with the download.

## GeneXus Trial installation

After downloading it, run the GeneXus installation file (note that you must have Administrator permissions and full control over the installation destination folder):



Once the content of the Setup has been verified, select the type of installation **Typical**, and press **Install**

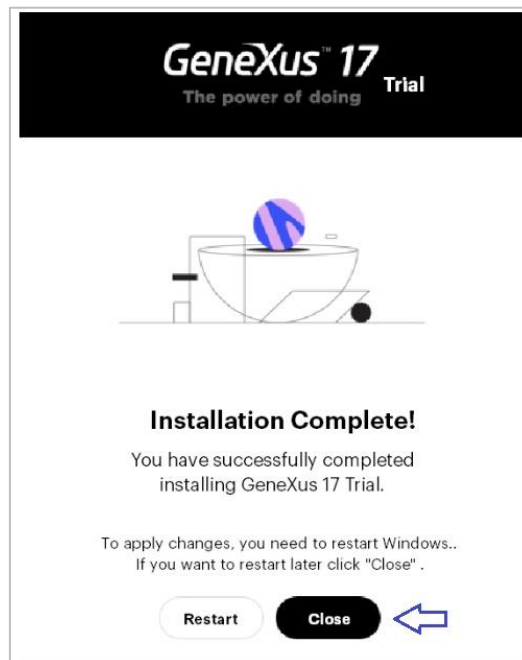


Wait until the installation process is complete.

Once the installation is complete, you will be offered to install the Android SDK. Skip it by pressing Cancel, as you will install it later when this topic is discussed in your course.



Finish the installation. Select Close:

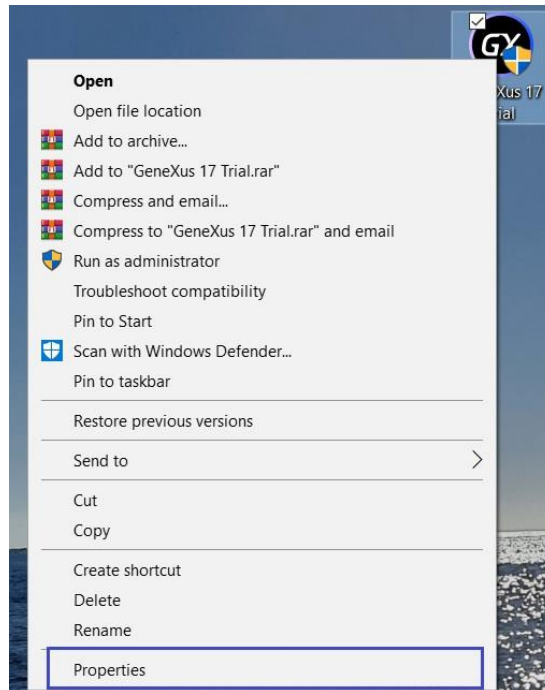


At this point, you must now authorize the learning license to be able to prototype locally.

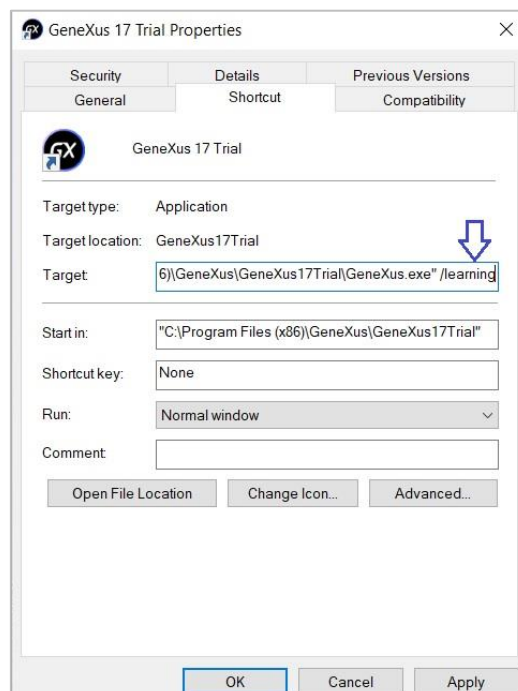


## GeneXus Learning authorization

Look for the GeneXus Trial icon on your desktop. Right click / Properties

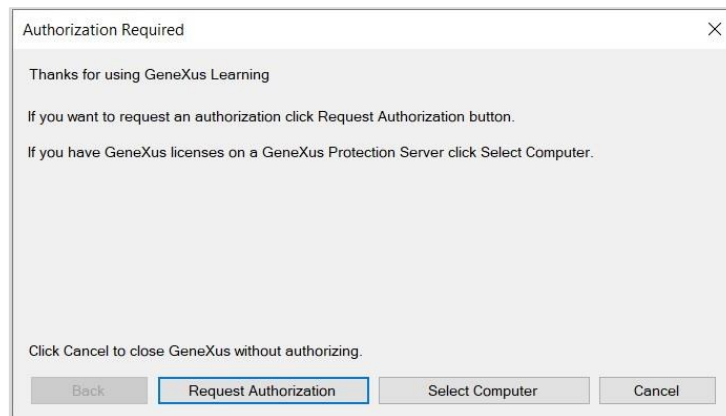


In the target path (Target) enter the **/learning** parameter, as shown:

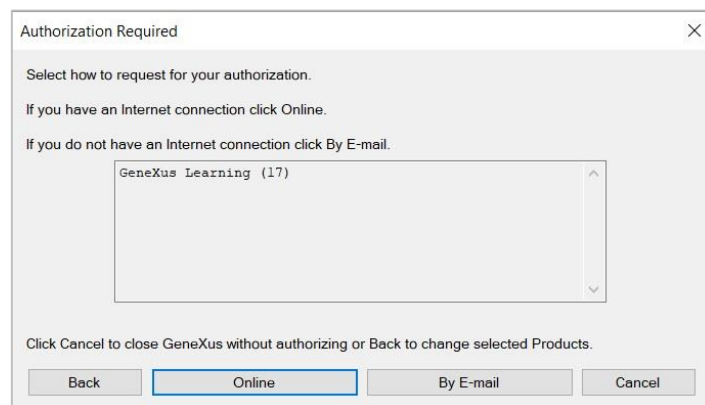


Finally, select the Advanced option, and check the **Run as administrator** box. Ok.

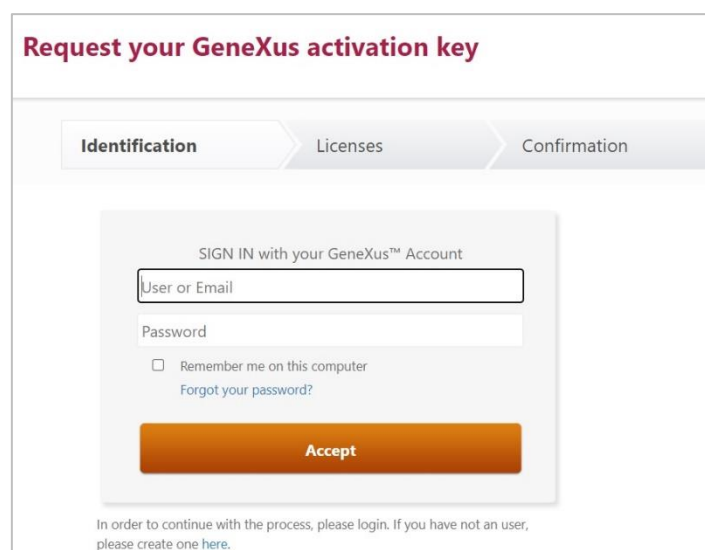
Run GeneXus. When doing it for the first time, the following window will appear. To request authorization for a license you must select **Request Authorization**.



In the next window select **Online**.



Then the browser will open with the GeneXus web page to authorize licenses, where you must log in with your GeneXus Account:



Once logged into the site, the following window will be displayed. The number of days that the license will be granted will be the one defined by the teacher as the duration of the course.

**Request your GeneXus activation key**

Identification → **Licenses** → Confirmation

Licenses contracted by GENEXUS S.A. *You don't have contracted licenses by this company.*

Non-contracted licenses

Product	Version	Type	#Users	Time Restriction	#Days	Start	End	Notes
<input type="checkbox"/> GX Learning	V17	New Authorization	1	Limited	30	06/17/22	07/17/22	

Would you like to add information?

**Finish**

If the data is correct, pressing "**Finish**" will send you an email with the licenses, and you will also be allowed to download them.

**Request your GeneXus activation key**

Identification → Licenses → **Confirmation**

**Your request has been processed correctly**

Activation keys pending confirmation

GX Learning  
We will contact you shortly.

Check your email, including Spam and Promotions folders. Once the licenses have been downloaded, go back to GeneXus and select **Next**.

Authorization Required

Thanks for using GeneXus Learning. There was an error checking your license:

You will receive an authorization e-mail with the activation keys.

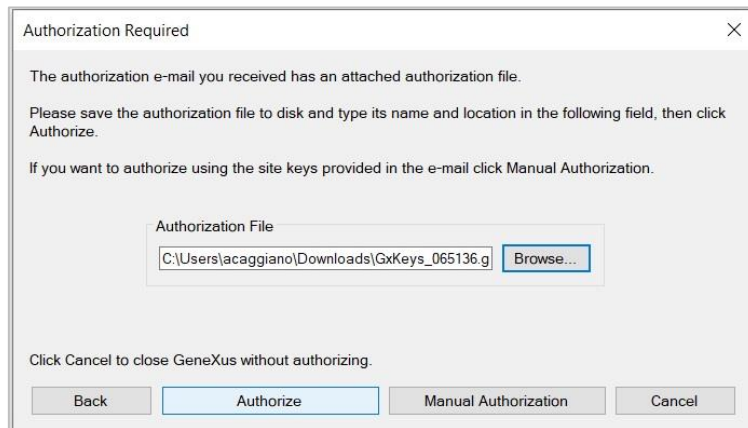
If the authorization e-mail arrived click Next.

If you want to send a new authorization request click Request New Authorization.

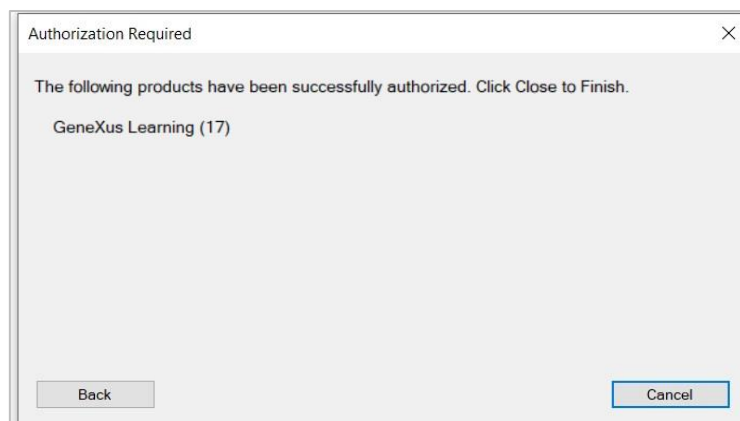
Click Cancel to close GeneXus without authorizing.

Back Next Request New Authorization Cancel

Find the previously downloaded .gxa file using the Browse option. Once the corresponding file has been chosen, press **Authorize**.



Click **Close** and start using GeneXus!

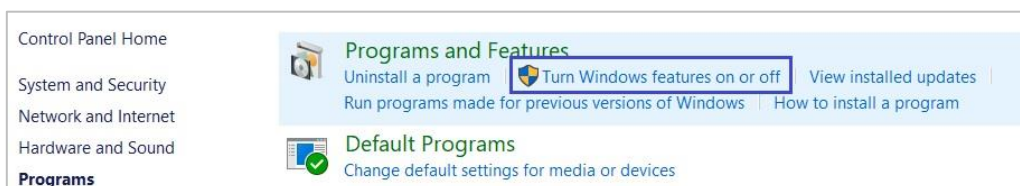


## Environment configuration

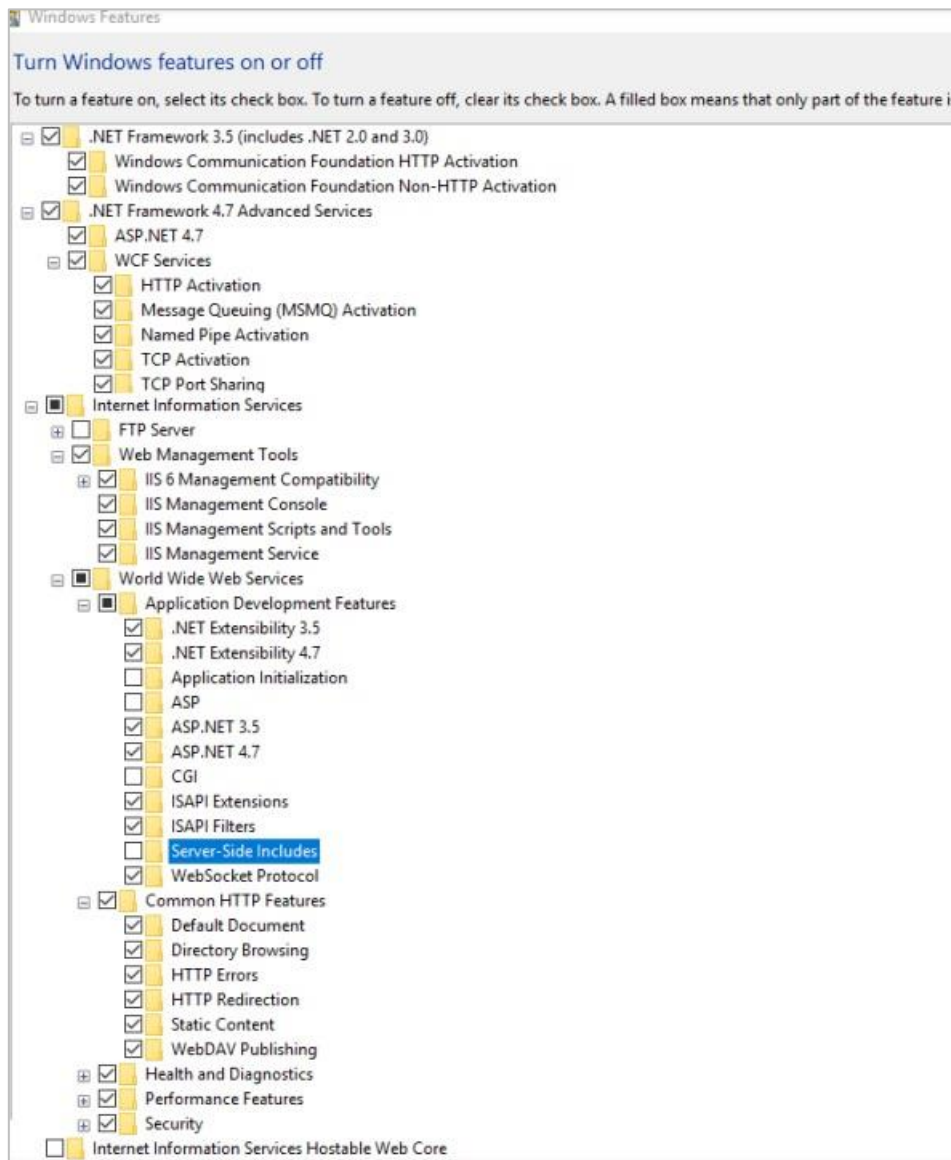
To prototype locally, you must install the components listed below.

## Components installation

From Control Panel / Programs / Programs and Features:



Select everything that appears in the following image:



## URL Rewrite Module

Download and install the [URL Rewrite Module](#).



## Frequently asked questions (FAQ)

To access the most common errors that can occur during the installation of the product or during the first run, go to the [GeneXus FAQ](#) section found in your course information on the Training site.