

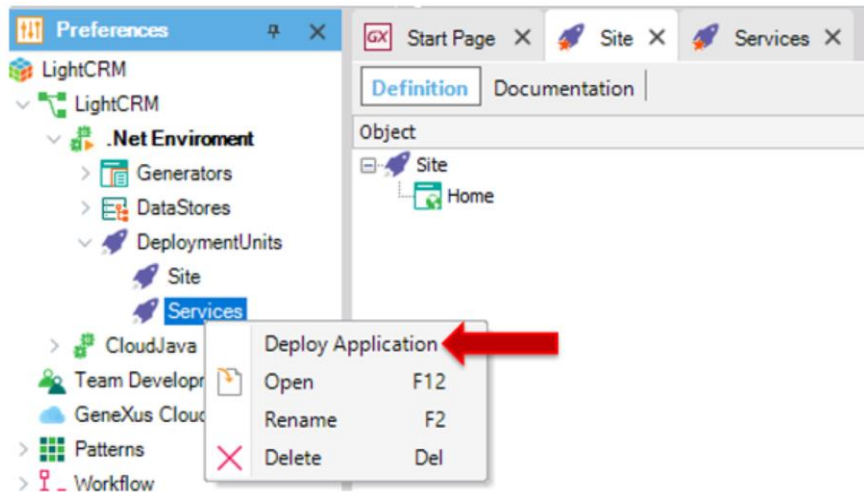
Deployment Unit Object

Using Deployment Units to store deployments

GeneXus® 16

A useful feature when deploying a set of objects is the ability to save the deployment package so as to deploy it at another time.
For this reason, Deployment Units were created.

It saves the set of objects that will be deployed together, to deploy them later.



A GeneXus Deployment Unit object allows defining a set of objects that will be deployed together.

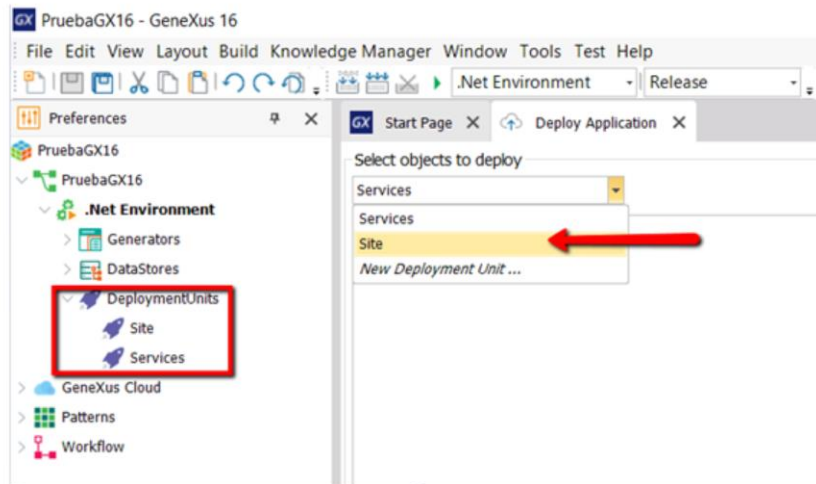
When we build a deployment with the Application Deploy Tool, a new Deployment Unit is created by default, where all the selections from the Deploy window are saved. That is to say, all the main objects and their references.

This Deployment Unit can be seen in the Preferences window, as another node in the Environment.

By default, everything is saved in a single Deployment Unit, but it is possible to create several Deployment Units and save the Web application, the Rest services or the Main objects of the SD application in separate deployment units.

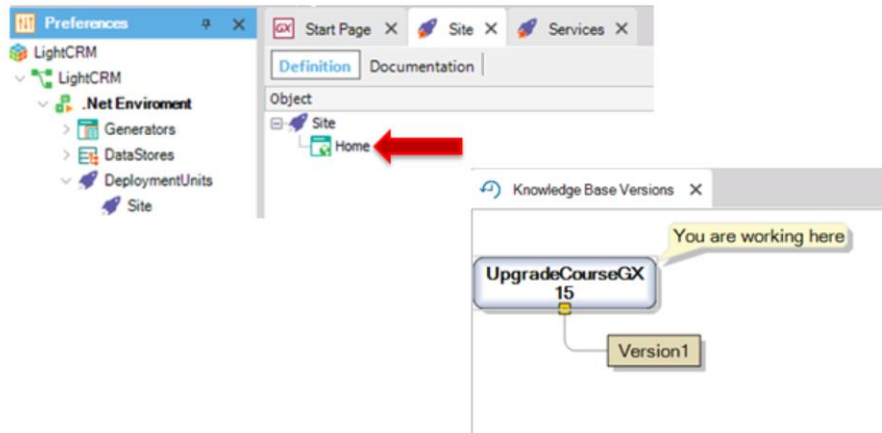
Each deployment unit can be deployed independently, from the node in the Preferences window by right-clicking on Deploy Application.

Deployment of a specific Deployment Unit



Also, it is possible to deploy a Deployment Unit from the Deploy Application window, by selecting the Deployment Unit in the "Selects objects to deploy" combo.

Updating objects involved in deployment:



We may ask ourselves the following: when we drag objects to a Deployment Unit in the Deploy Application window and then change these objects, does the deployment take into account the latest changes made to the objects, or when dragging them the objects' status is frozen and the deployment is made using the object as it was when I dragged it?

Since we are running a deployment, in the Deploy Application dialog box references remain to the generated and compiled objects, because they will be taken to production. If objects already generated were added to the window, but then the object is changed and not generated, the deployment will use what was previously generated. It must be made clear that when a frozen version of a KB is created, we mean that the object status is saved regarding its edition, but not the status of what was generated or compiled in the object. To save what was generated or compiled, a Deployment Unit must be used, in the Deploy Application window.

More information about the Deployment Unit object:

<https://wiki.genexus.com/commwiki/servlet/wiki?38886>

For more information about the Deployment Unit object, click on this wiki link:
<https://wiki.genexus.com/commwiki/servlet/wiki?38886>

GeneXus™

The power of doing.

Videos

training.genexus.com

Documentation

wiki.genexus.com

Certifications

training.genexus.com/certifications