

## How to check if GeneXus Trial is installed correctly

### Contents

<a href="#">Abstract</a>	2
<a href="#">Creating a Web and Smart Device application in GeneXus</a>	2
<a href="#">Step 1 – Creating a Knowledge Base</a>	3
<a href="#">Step 2 – Creating a transaction object</a>	5
<a href="#">Step 3 – Creating and running the Web application</a>	7
<a href="#">Step 4 – Creating and running the Smart Device application</a>	12
<a href="#">Related Links</a>	23

## Abstract

In this document you will find the steps required to confirm whether GeneXus Trial works correctly for training courses.

GeneXus Trial allows working with the SQL Server DBMS and .NET generator, as well as prototyping in the **cloud**.

**Note:**

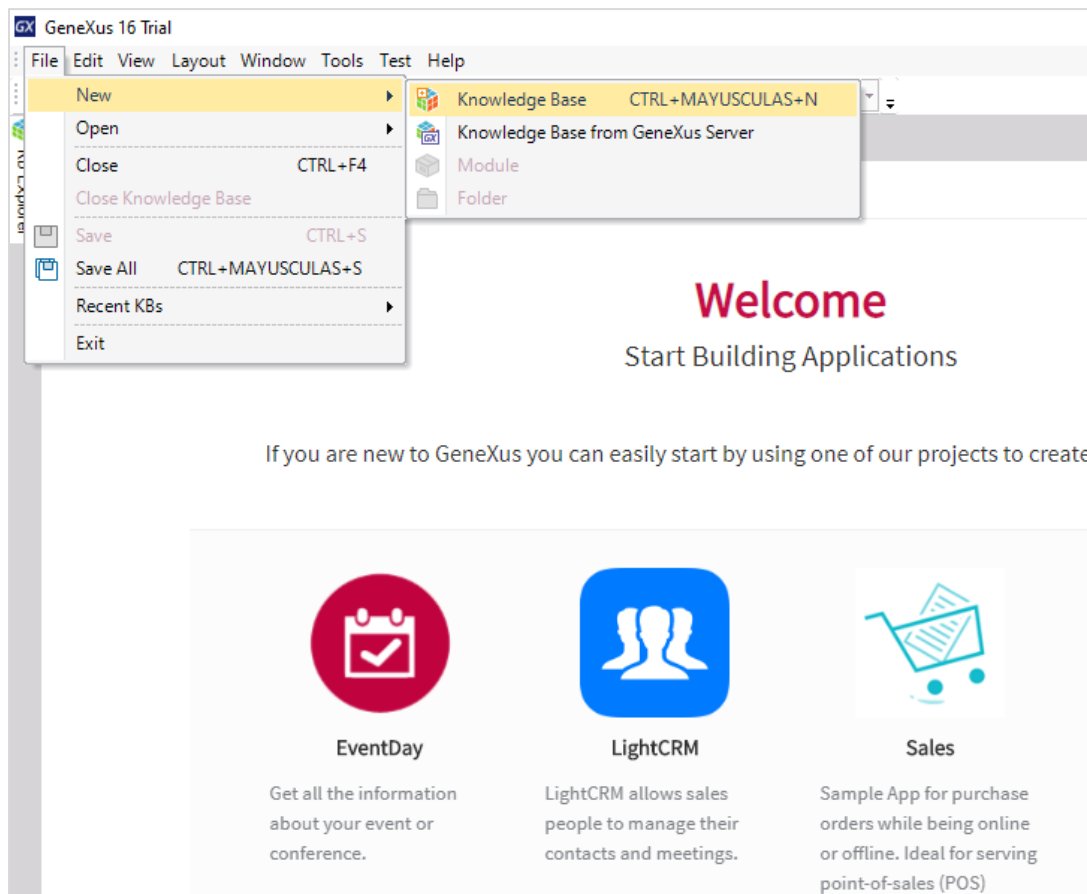
- The images included in this document were captured using GeneXus version 16 and are also valid for version 17.

## Creating a Web and Smart Device application in GeneXus

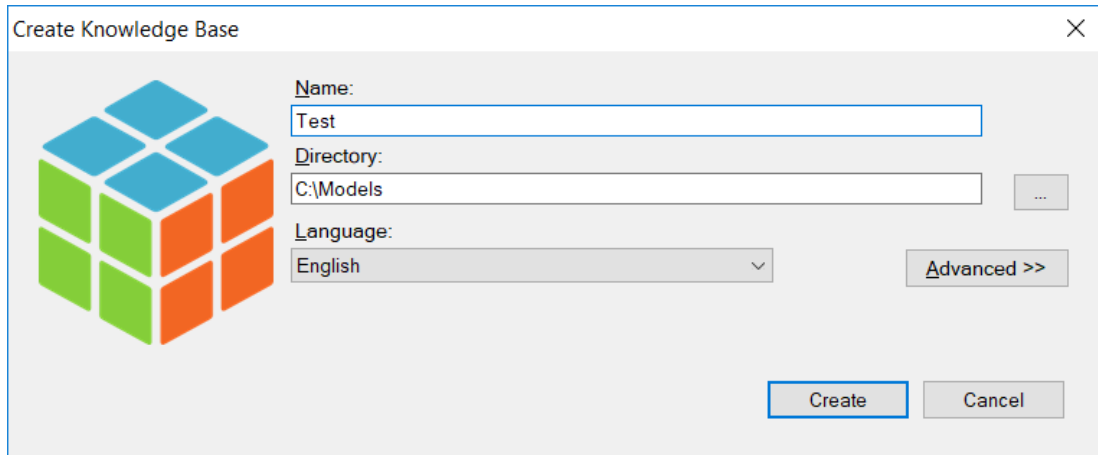
To perform the following steps, it is assumed that GeneXus Trial is already installed and that GeneXus is run from the desktop shortcut.

### Step 1 – Creating a Knowledge Base

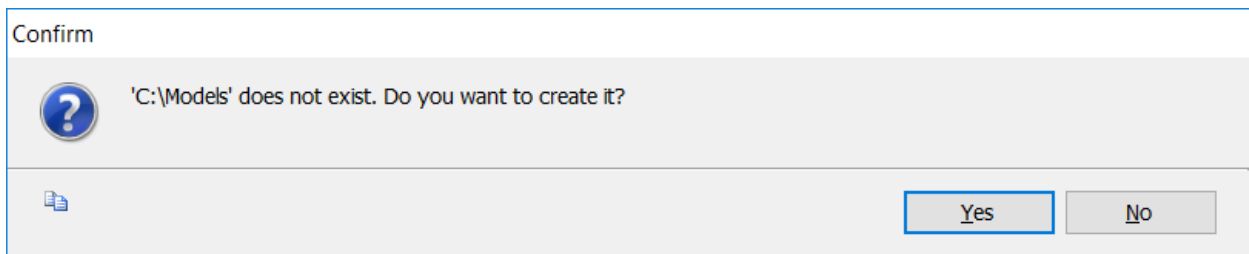
In the menu, select **File** → **New** → **Knowledge Base**:



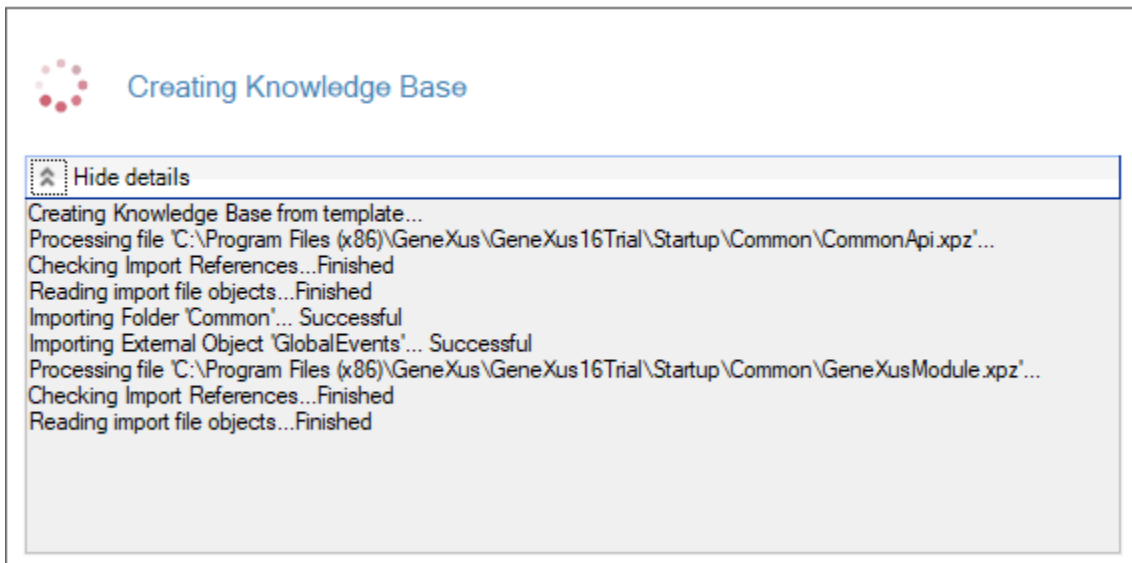
Call it Test and click on **Create**:



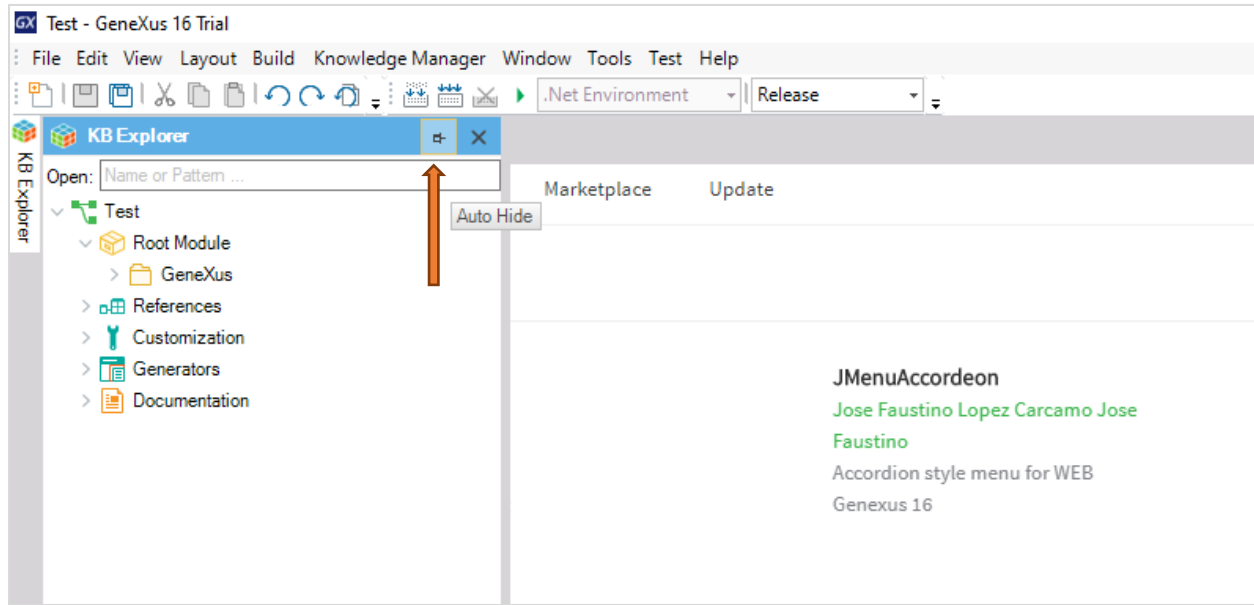
Accept the creation of the folder C:\Models by clicking on **Yes**.



GeneXus indicates that the KB is being created:



When it is complete, you will see that the contents of the GeneXus development environment have changed. Open the KB Explorer and anchor the window by clicking on the *AutoHide* pin.

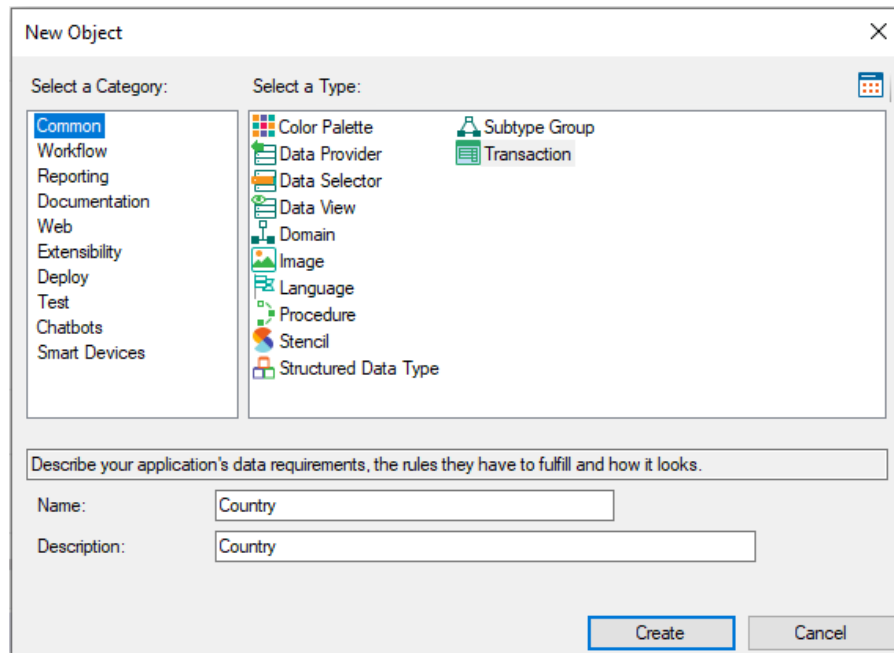


Note that GeneXus has automatically created some components that can be seen below the *Test* node, which corresponds to your KB.

## Step 2 – Creating a transaction object

Now, create a GeneXus object to store, view, and change data over a database.

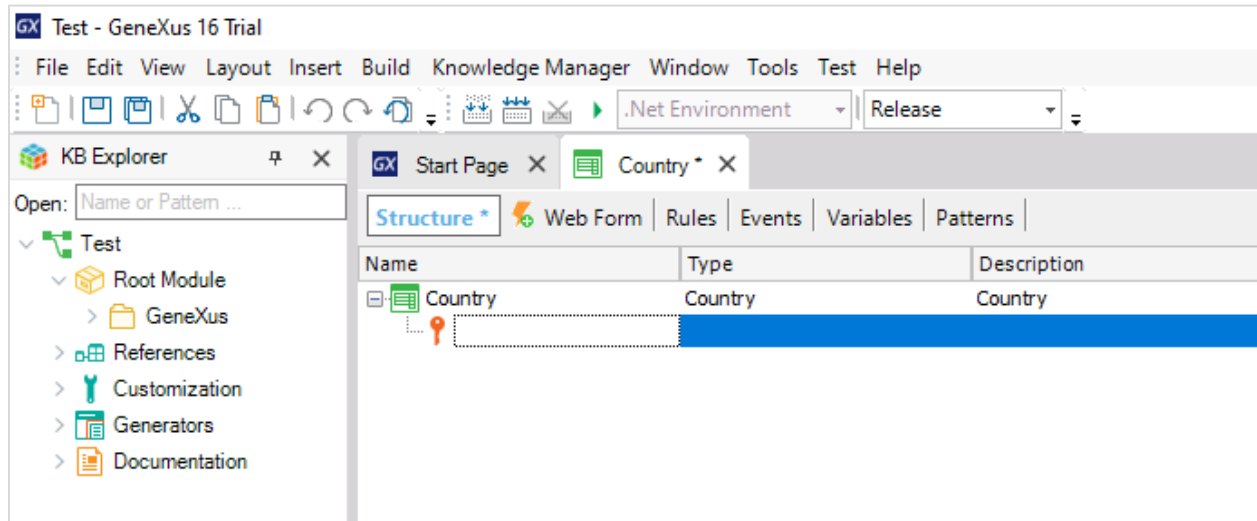
In the menu, click on File → New → Object, select an object of Transaction type, call it Country and click on **Create**.



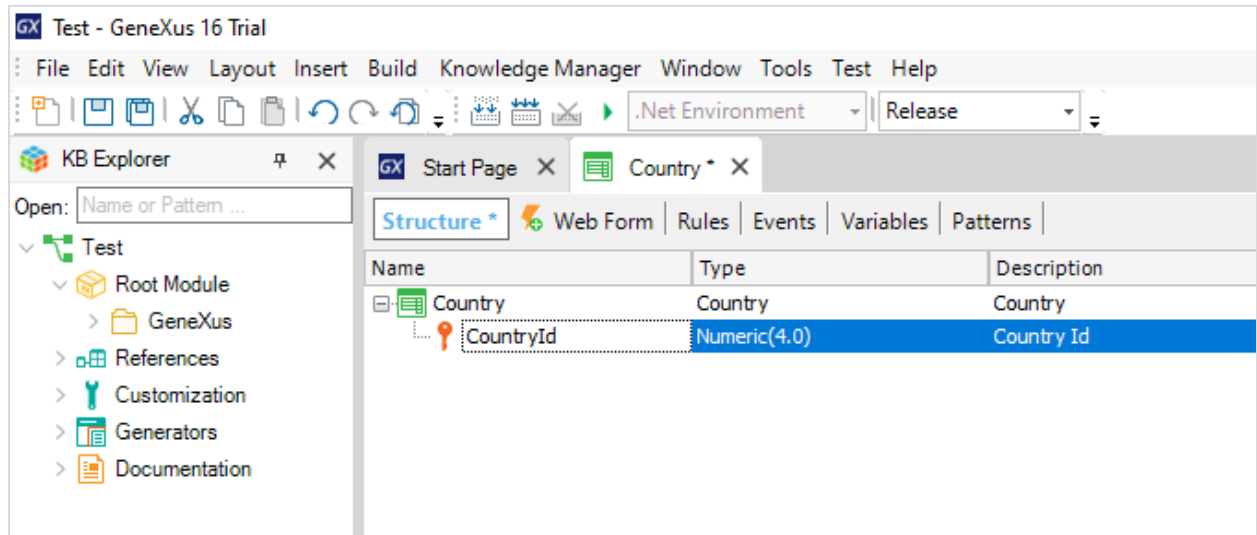
Note that a object has

Country been

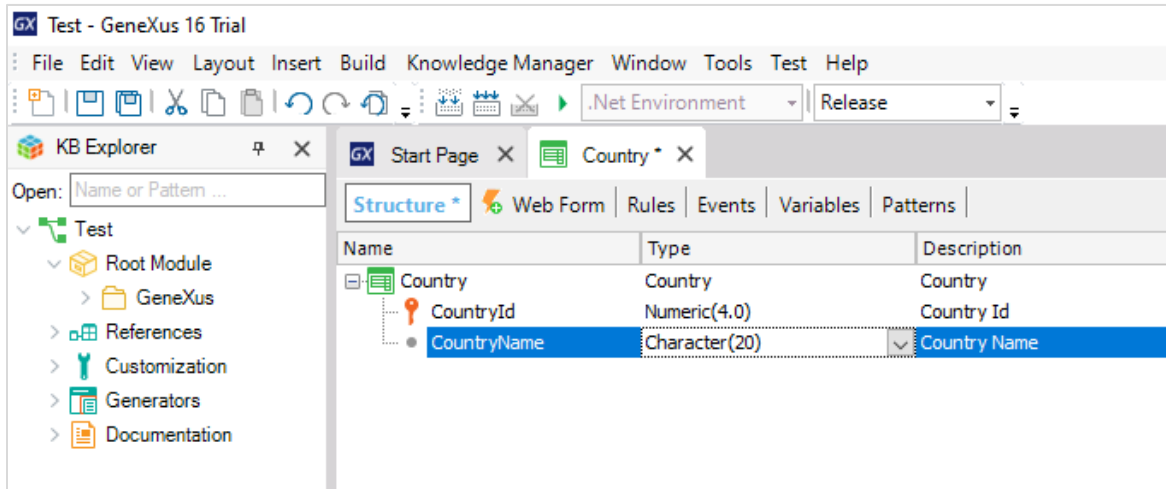
created, and that you're positioned on the Structure tab. In it, add the Country attributes to be stored, starting by its identifier (key symbol).



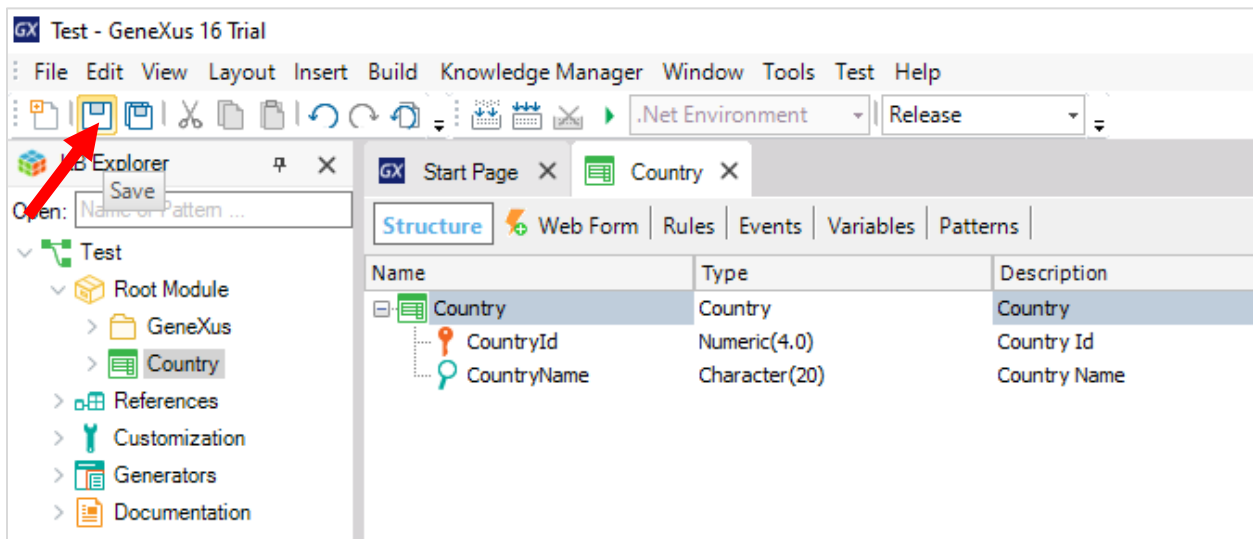
Here, type CountryId, click on Tab, leave the default data type (numeric value of length 4, with no decimals) and press Enter.



Press Enter again and add the CountryName attribute, of Character(20) type.



Save the Country object using the corresponding icon in the toolbar.



### Step 3 – Creating and running the Web application

The transaction object is ready to be executed.

To do so, press **F5**.

Because this is the first time you are running the application, the following dialog box will be displayed for you to enter your GeneXus account credentials and press the **Sign in** button.

**NOTE:** If you haven't created a GeneXus account, select the option "No, I'm new in GeneXus, I need to create an account" and follow the instructions that will be provided to create it.

GeneXus Account Authentication ✕

**Create a GeneXus account or Sign in**

Please, enter your email address below:

  
 Remember me

Do you have a GeneXus account?

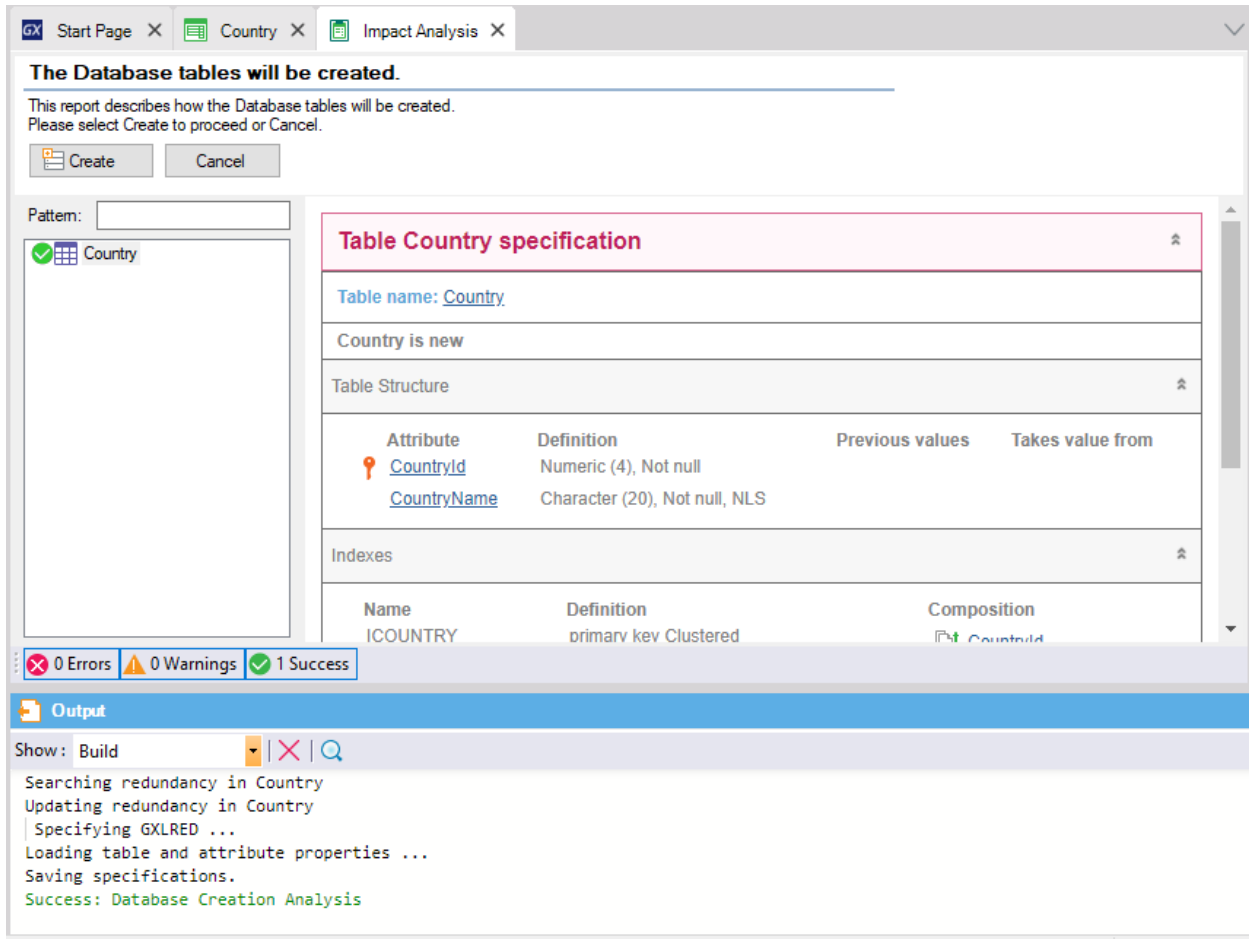
No, I'm new in GeneXus, I need to create an account

Yes! I already have one and my password is:

  
[Forgot your password?](#)

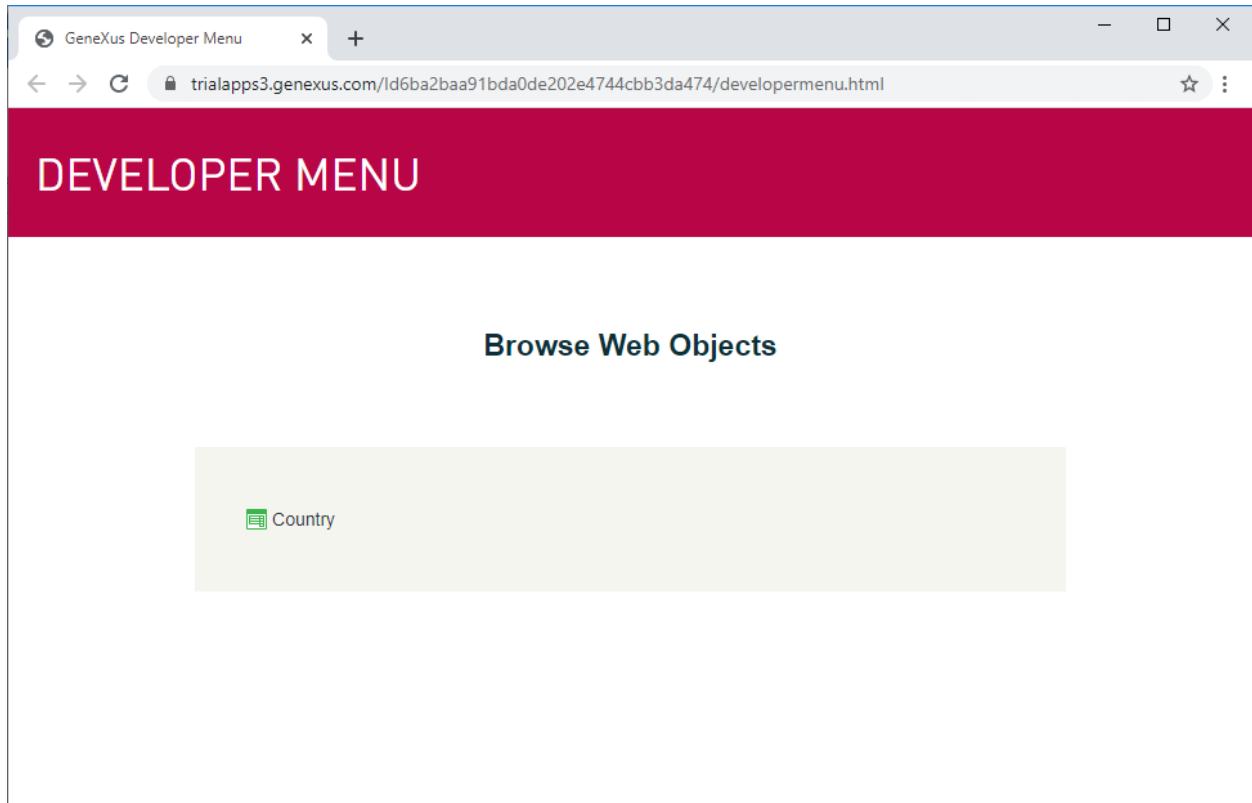
GeneXus runs a database creation analysis and shows the following impact analysis, which shows that a table called Country will be created. Click on **Create**.



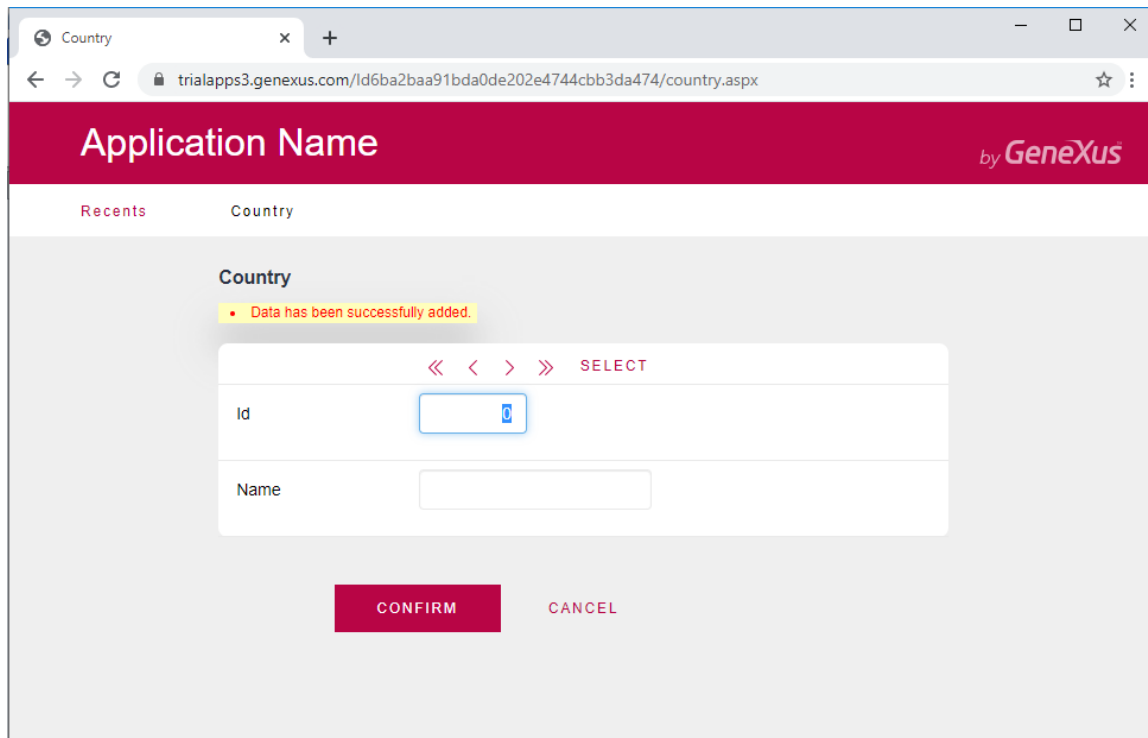


Next, GeneXus will automatically create the application. To do so, it will generate the necessary source code, and compile it and execute it.

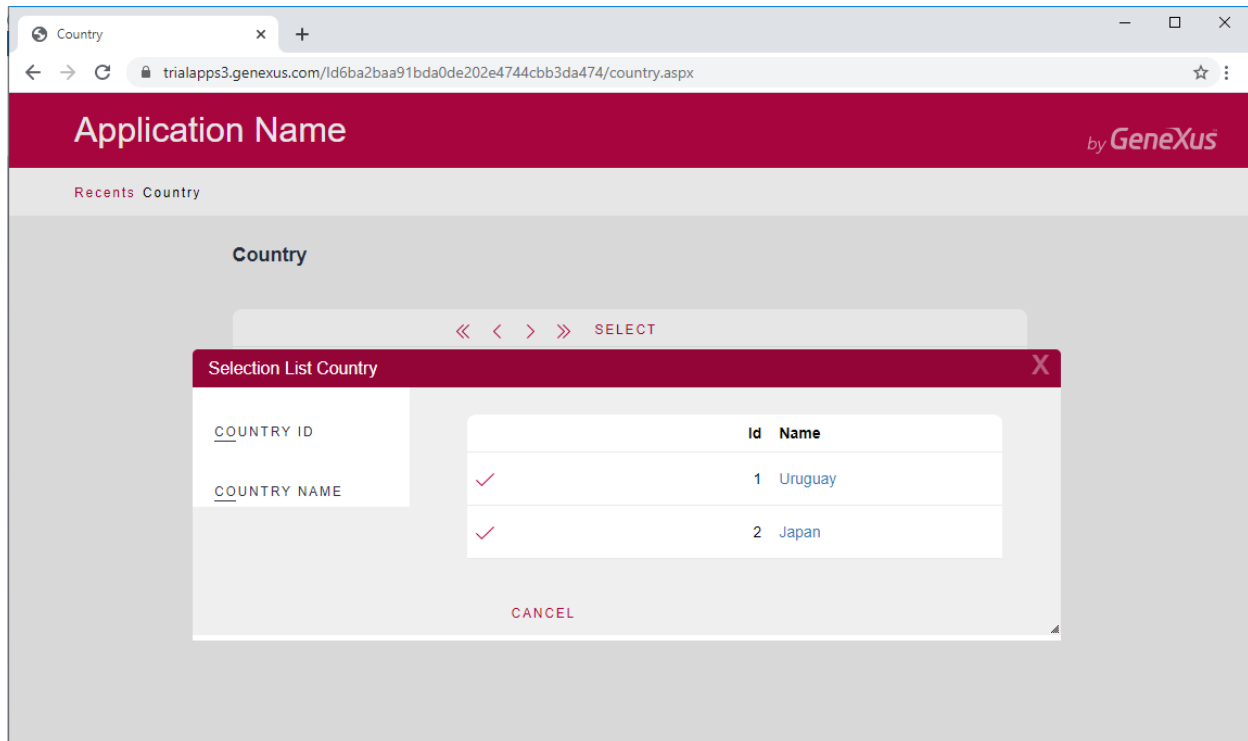
A browser window is opened with a developer menu that includes a link to Country.



Click on Country, and a screen will be opened to enter a country's details. Enter 1 as ID value, and *Uruguay* as name. Next, click on the Confirm button. GeneXus displays a notification to inform you that the data has been entered successfully.



Now, enter an ID with value 2 and the name *Japan*, and click on Confirm. Click on the Back and Next buttons to confirm that the details of both countries have been entered. You can also click on Select to view the records entered:

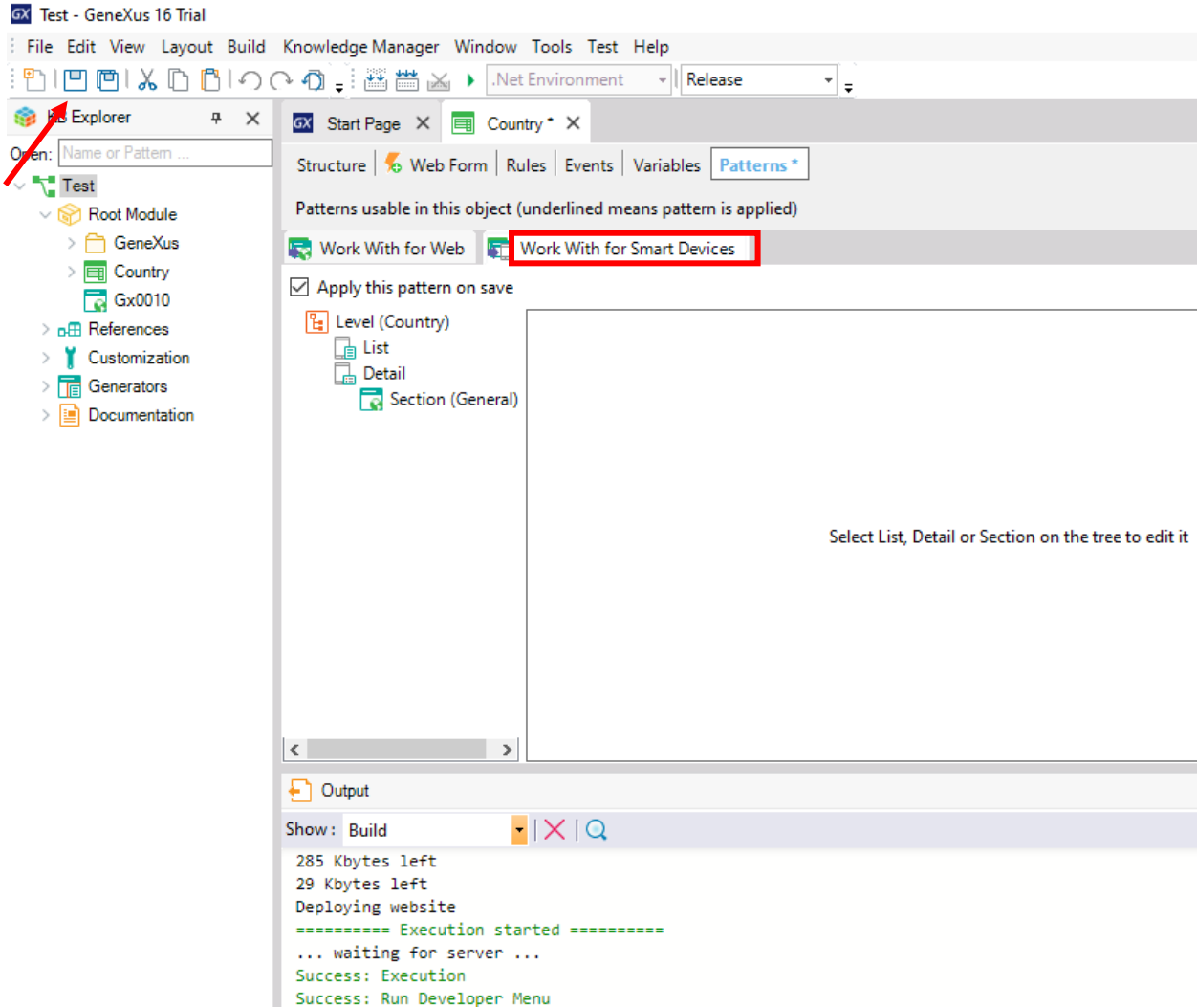


In this way, you have checked that the Test database, and the Country table with attributes for the identifier and country name, have been created in GeneXus. You've also checked that GeneXus has correctly created the Web application to access and maintain the countries' data.

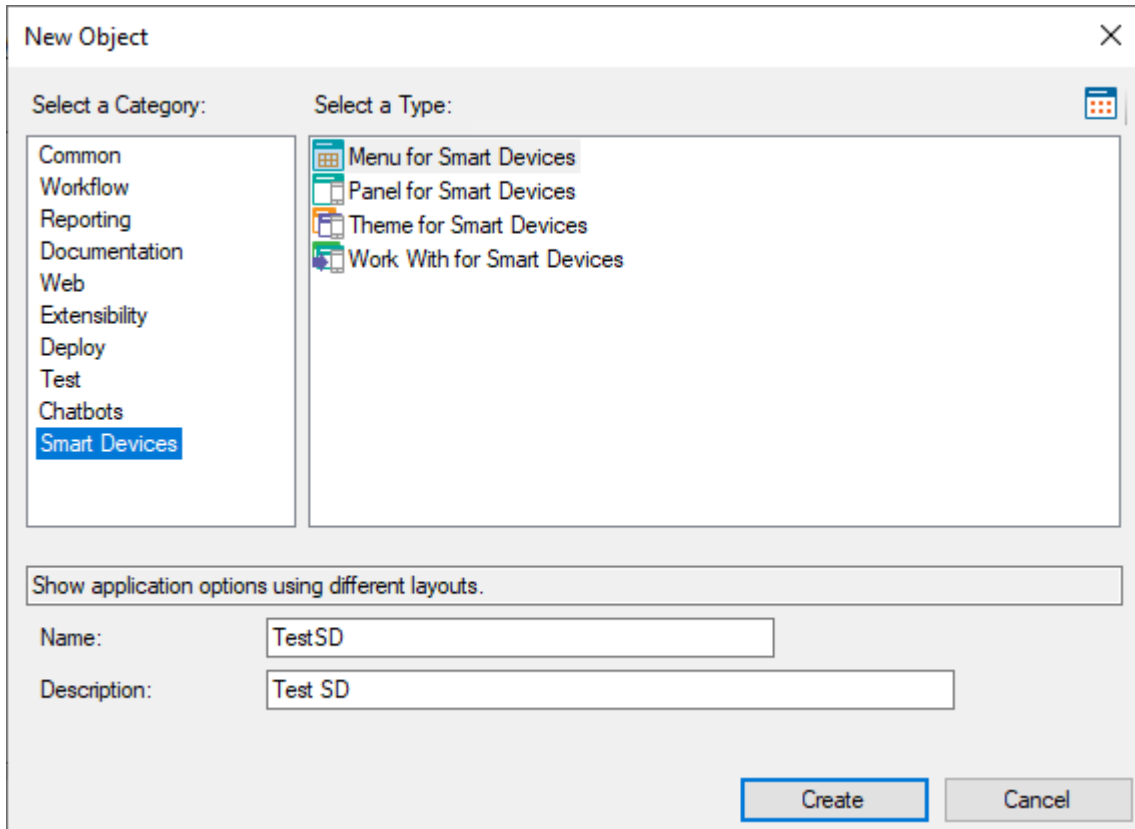
Next, you will have GeneXus create a Smart Device application for Android to access the countries' details.

#### Step 4 – Creating and running the Smart Device application

Return to GeneXus and select the Country transaction. Click on the tab **Patterns** → **Work With for Smart Devices**, select the check box **Apply this pattern on save**, and press the Save button in the toolbar.

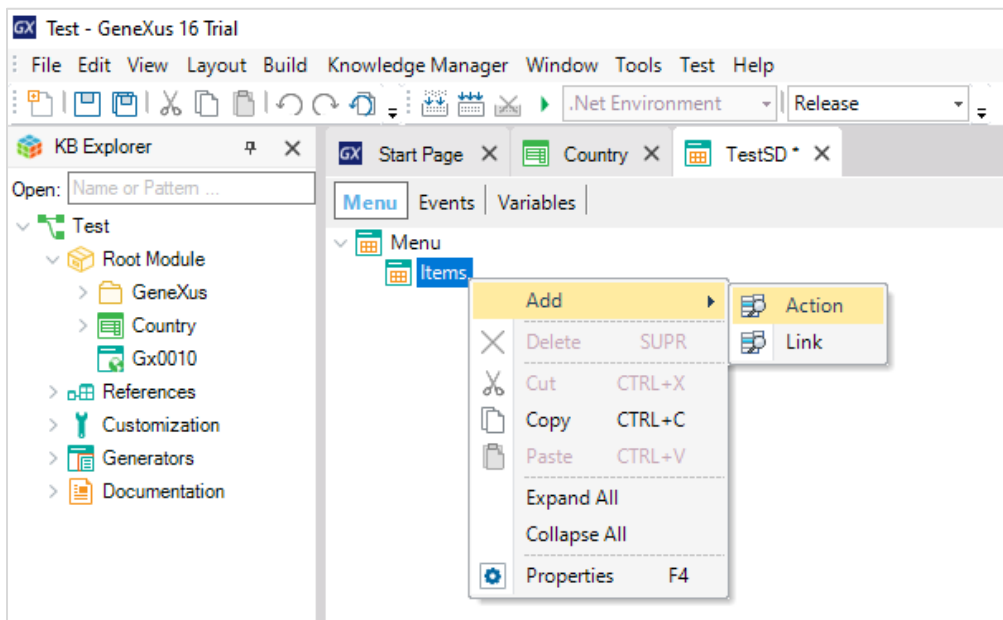


Next, open the main menu and from File → New → Object, create a GeneXus object of the Menu for Smart Devices type, call it *TestSD*, and click on **Create**.

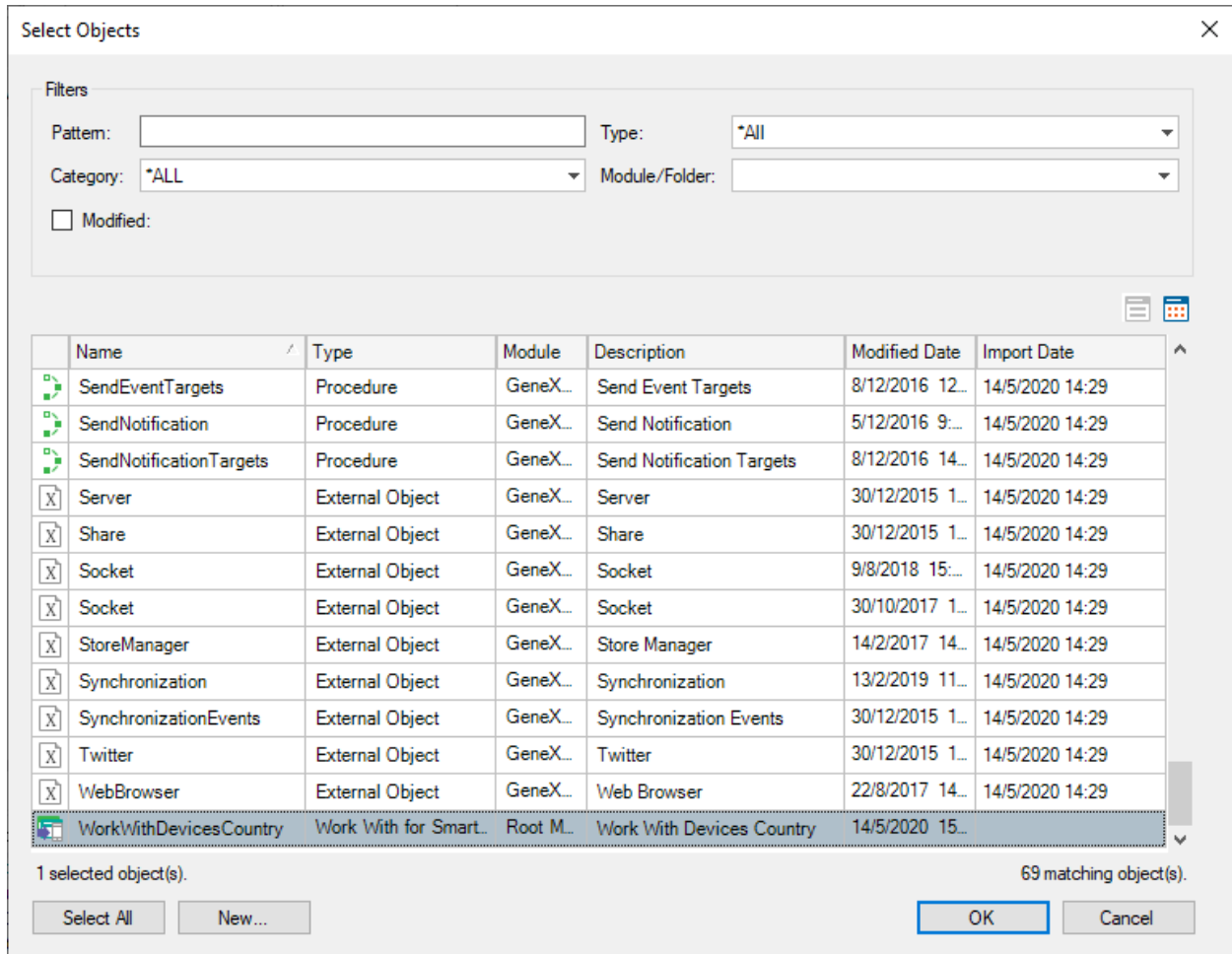


The menu you've just created is opened in GeneXus. In it, create a button to access the Smart Device application in order to browse and maintain the details of the countries saved in the database.

To do so, right-click on Items and select Add → Action.

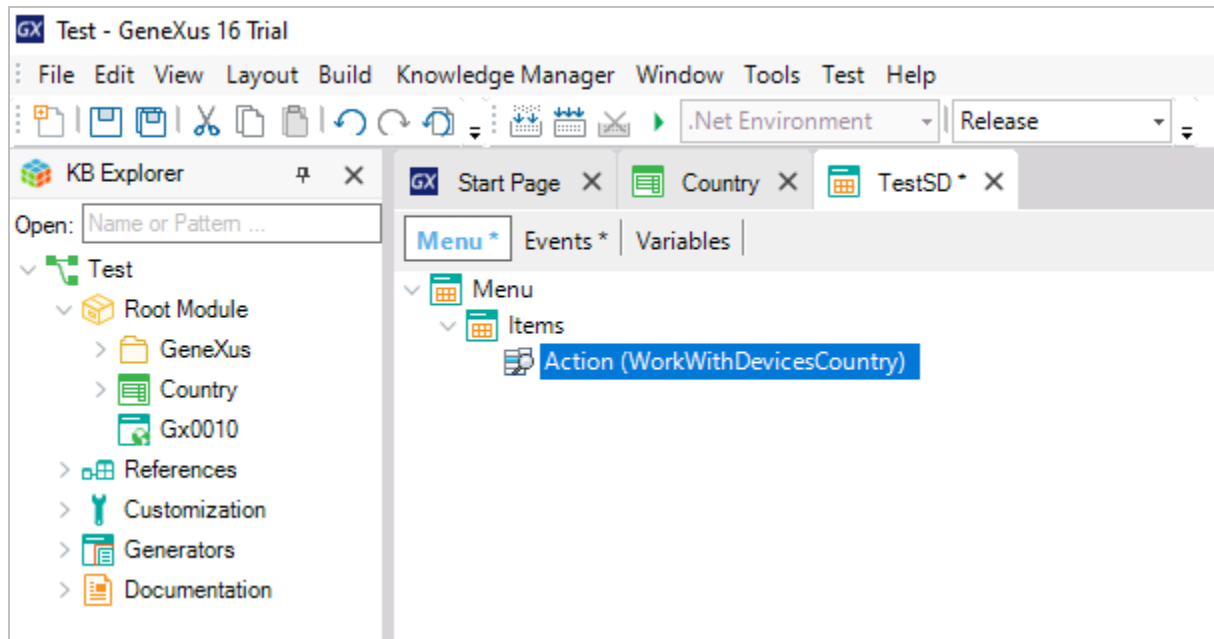


Next, select the *WorkWithDevicesCountry* object and click on **OK**.



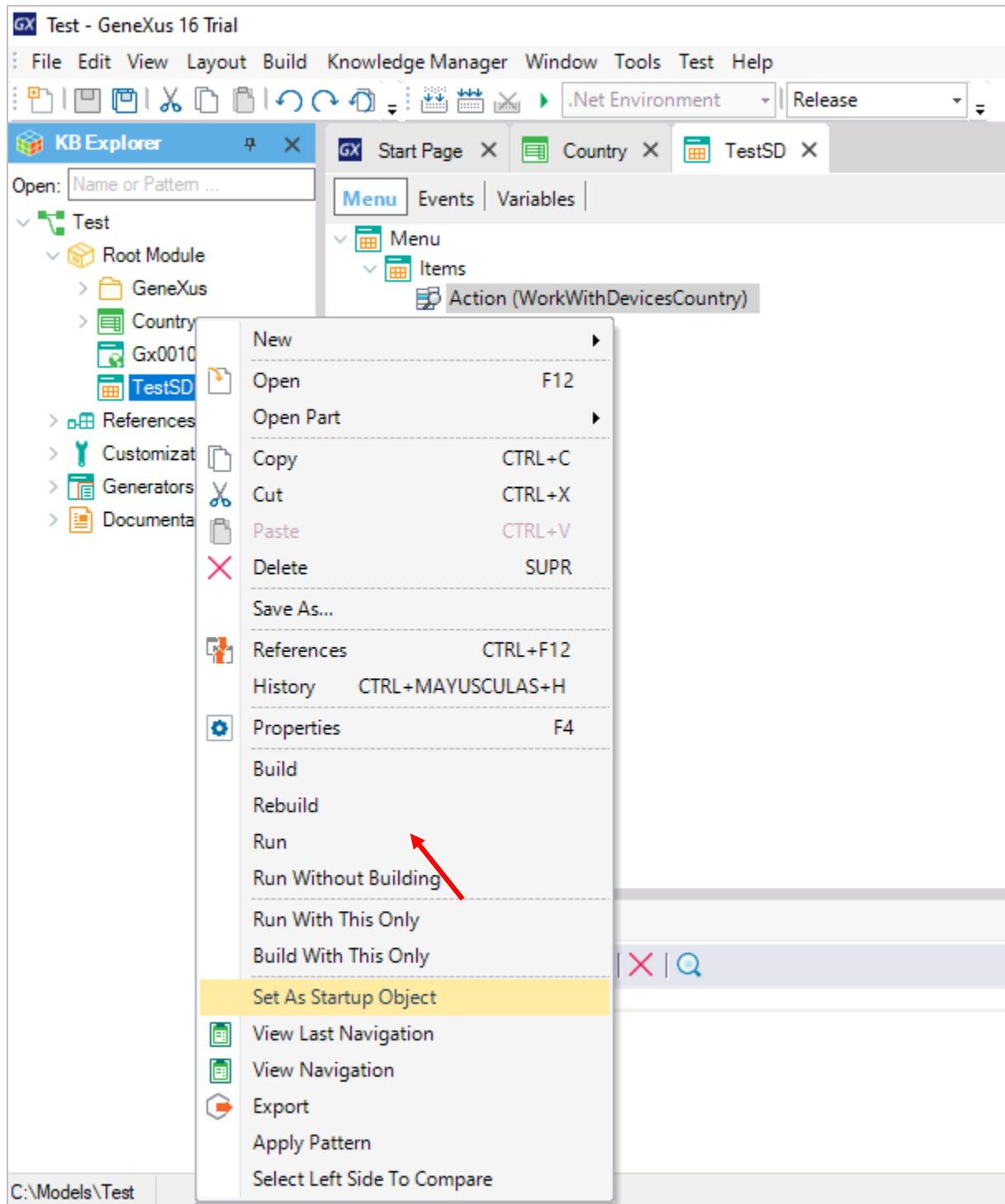
As you can see, GeneXus has created the corresponding Action as an item in the TestSD menu.

This will create a button in the mobile device screen, from which you can invoke your program.



Save the TestSD menu object.

Next, place it in the KB Explorer, right-click on it, and select *Set As Startup Object*.

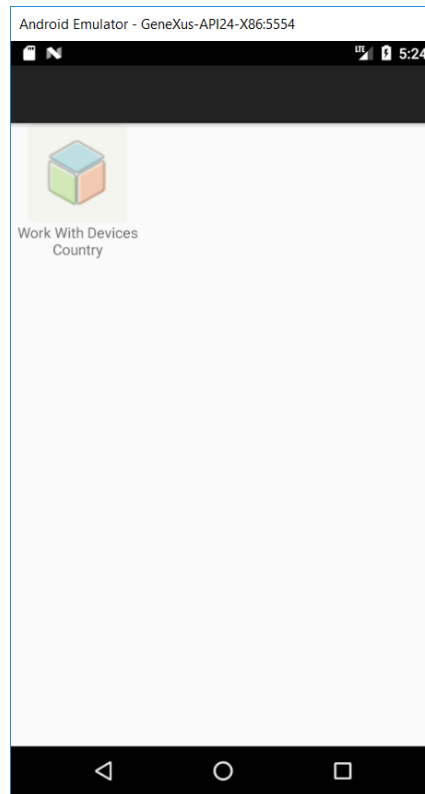


Press **F5** again.

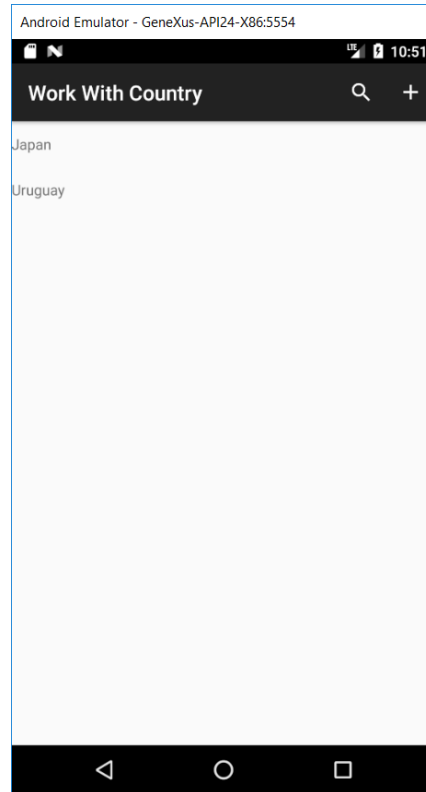
GeneXus starts to generate several objects automatically. If at this point the Windows Defender Firewall in your machine blocks some of the app's components, give them access.



After a few minutes, the Android emulator is opened automatically and a Work With Devices Country button is displayed on its screen.

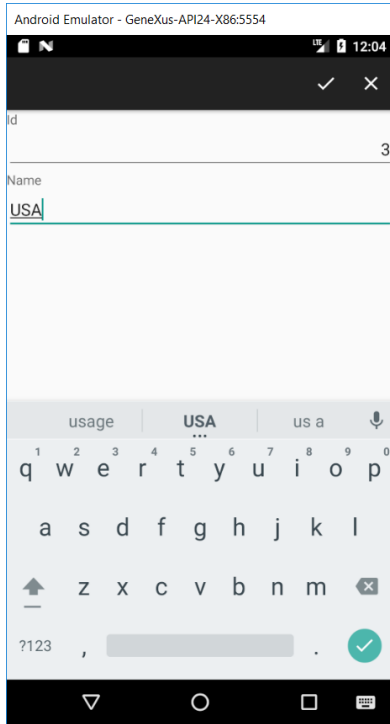


Click on the button to open the screen to work with countries, where the countries you have entered are displayed.

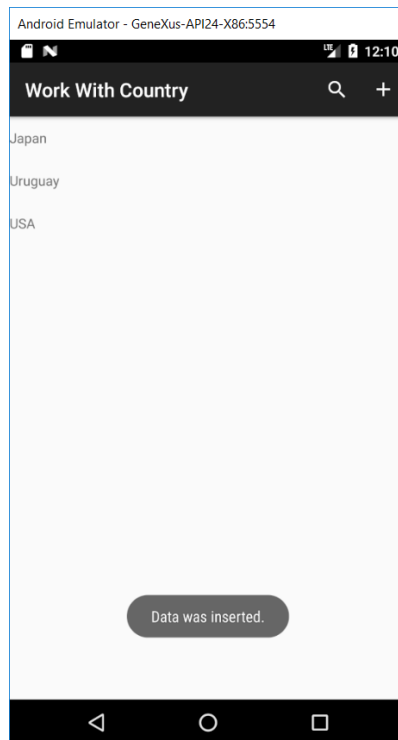


**NOTE:** If you have any problems to run it, click on the links shown in the following chapter.

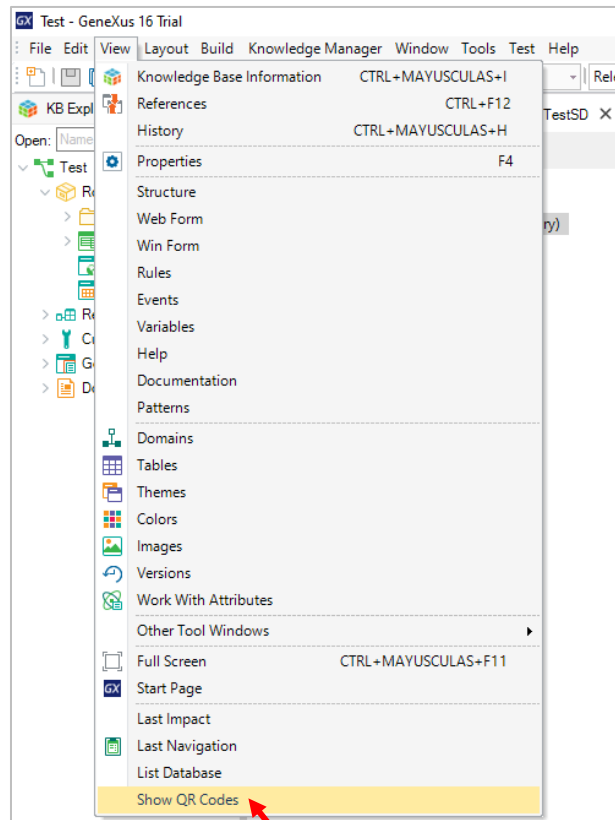
To continue with the test, click on the “+” button to enter a new country. Enter the value 3 in the ID field and *USA* in the Name field. Click on Confirm.



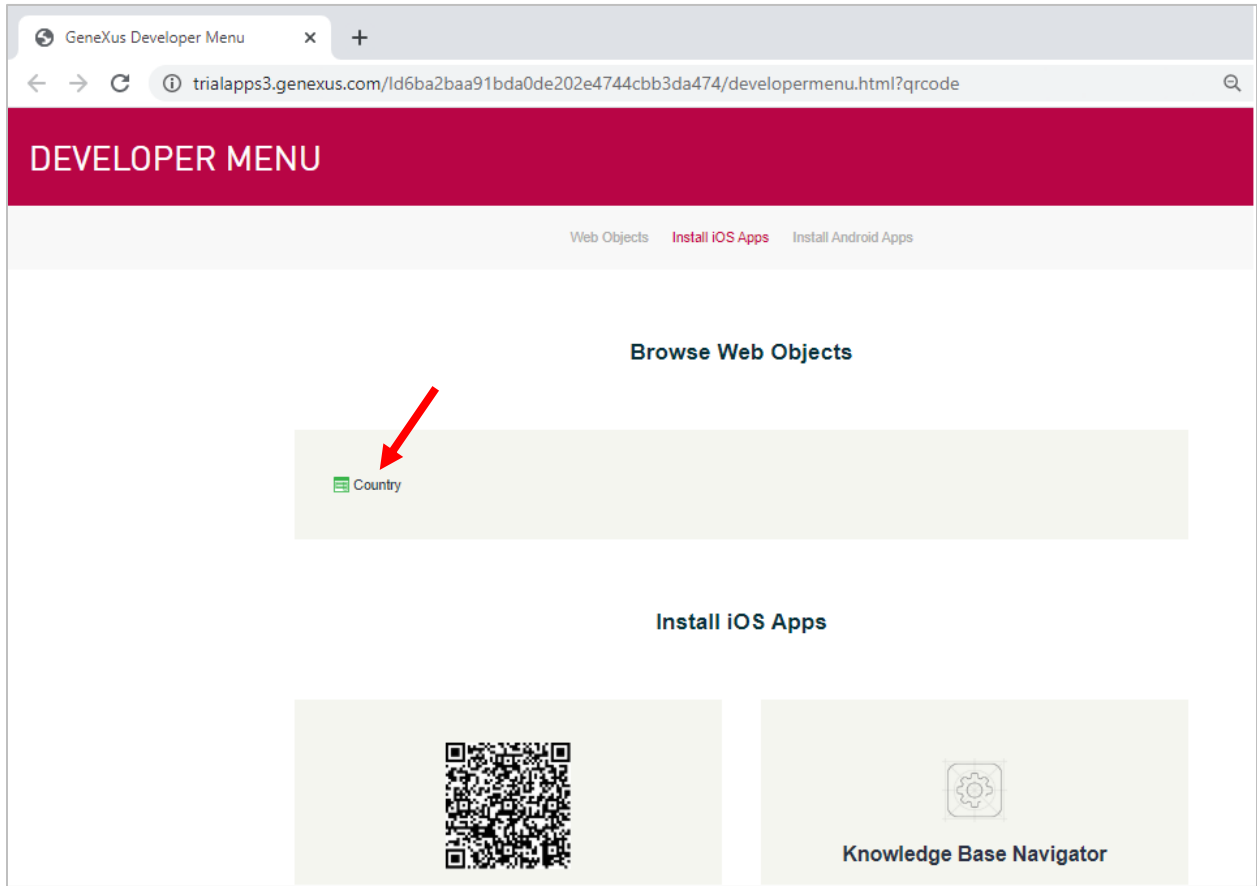
The country USA has been added to the list of countries.



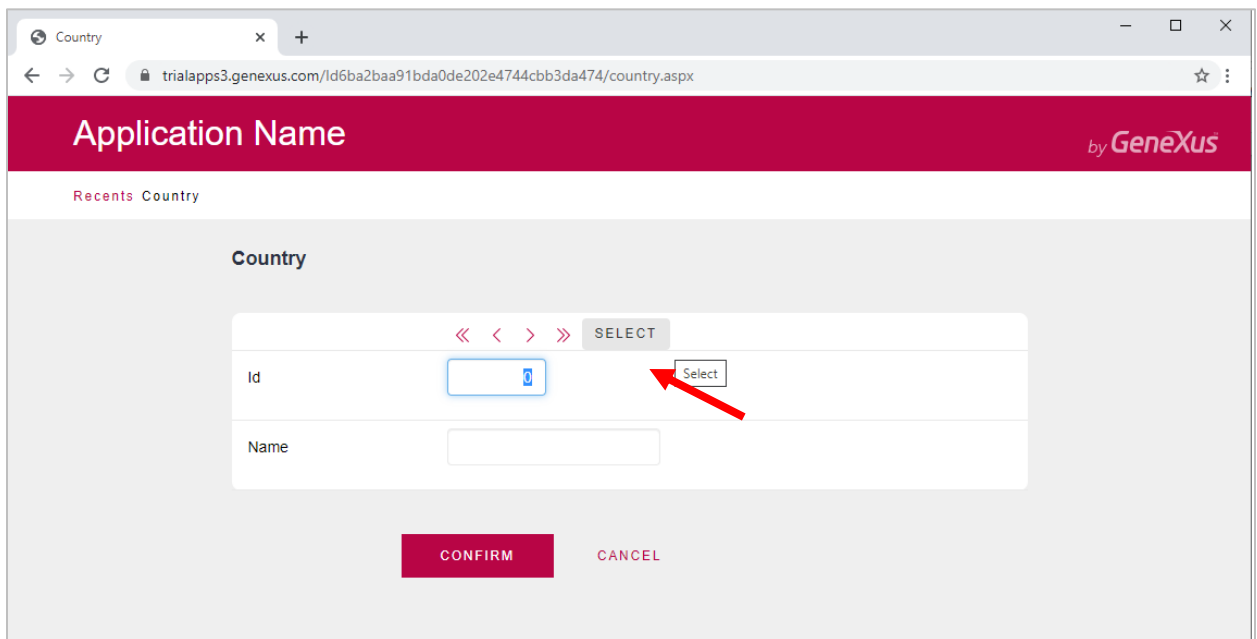
Return to GeneXus, and in the main menu select View → Show QR Codes.



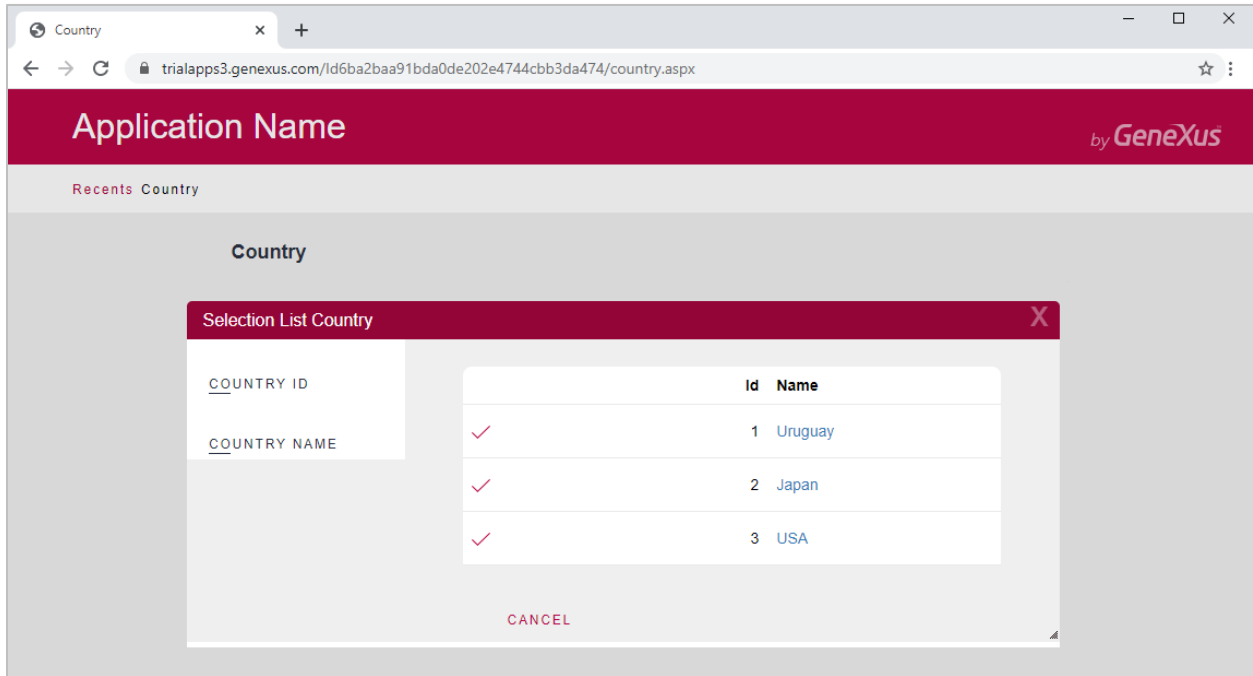
The browser window is opened. Click on the Country link:



In the Country window, click on Select...



You can see the list of countries entered:



Confirm that USA is included in the list; it was added from the Smart Device.

If you were able to successfully perform all the steps indicated in this document, you can use GeneXus Trial for your training. We suggest visiting the links below; if you find any issues, please send an email to [training@genexus.com](mailto:training@genexus.com).

## Related Links

- 1) Installation requirements and restrictions:

[GeneXus 16 hardware and software requirements](#)

(Restrictions of the **GeneXus Trial** version: 250 objects and 90 attributes.)

- 2) GeneXus Documentation Wiki:

[GeneXus Community Wiki](#)

- 3) Errors when using Smart Devices:

[Android – FAQ and Common Issues](#)

[URLRewrite – Common Issues](#)

- 4) GeneXus training website:

[GeneXus Training Site](#)