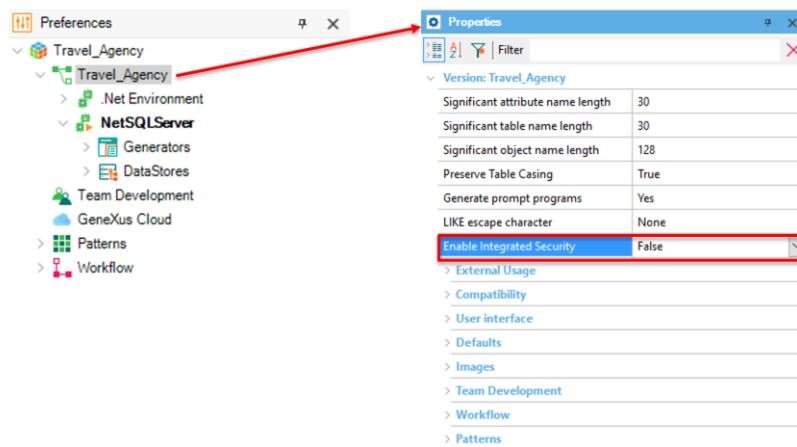


Security with GeneXus Access Manager

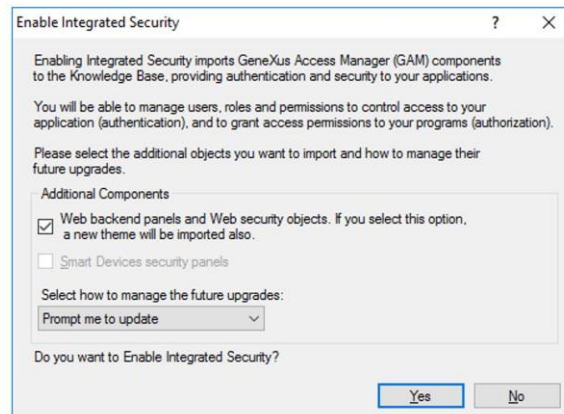
In general, applications imply restricted usage for duly authorized users. This calls for some type of login aspect for verifying user authentication and for the occasional authorization or restriction of use for specific functionalities, depending on the user profile.

To fulfill such requirements, GeneXus provides a security model called GeneXus Access Manager (GAM) that solves authentication and authorization functionalities for both web applications and smart device applications.

This module is made available with all its security controls by simply configuring the “Enable Integrated Security” property -in the Preferences window of our knowledge base, at the active version level- with True value.

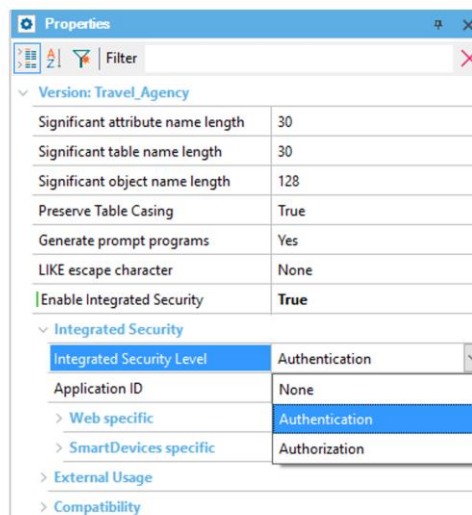


This will cause the import of the GeneXus Access Manager to be integrated in our application, thus allowing us to solve the security issue. This will also imply the addition, to our KB, of two folders under the Root Module that contain several objects.



3 2 1 0 -

Once our security is enabled, we may select whether all we want is just Authentication or if we prefer Authentication and Authorization. This is done by setting up the **Integrated Security Level** property.



3 2 1 0 -

Something important to bear in mind is that when we enable the GAM we must then execute the **Rebuild all** action in the KB. This is meant to create the database that the GAM will use.

Once the GAM is applied, when we execute the application, the first thing displayed will be a login object. This is valid for both web applications and smart device applications.

• User must be authenticated. (GAM104)

LOGIN

DON'T HAVE AN ACCOUNT? [REGISTER](#)

User Name

Password

☐ Keep me logged in

☐ Remember Me

LOG IN

[FORGOT YOUR PASSWORD?](#)



Only local authentication will be enabled by default, where we may access with the user: “admin” and the password: “admin123”. But we may also define other authentication types such as Facebook, Twitter or an external service like, for example, a web service.

In order to access the Backend in runtime we must execute –from the Developer Menu- the GAMHome that is the main object of the GAM’s backend. Through this backend we may set up users and different permits on our application’s objects.

GENEXUS ACCESS MANAGER

USERS ROLES SETTINGS

A Administrator

✓ SHOW FILTERS Users Try a Search + ADD

User Name	First Name	Last Name	Authentication	
admin	Administrator	User	local	EDIT

FIRST/ PREV / NEXT



The GeneXus Access Manager allows the implementation of secure applications, as it provides us with a fully integrated solution for solving the Authentication and Authorization of our web and smart device applications.

To learn more on how to use GAM in GeneXus go to the following wiki link:

The GeneXus logo is displayed in white text on a red rectangular background.

<http://wiki.genexus.com/commwiki/servlet/wiki?24746,Toc%3AGeneXus+Access+Manager+%28GAM%29>,