

Integration and Customization of the GXflow Standard Client

GeneXus BPM Suite Course

GeneXus™ 17

December 2020

Copyright © GeneXus. 1988-2020.

All rights reserved. This document may not be reproduced by any means without the express permission of GeneXus. The information contained herein is intended for personal use only.

Registered Trademarks:

GeneXus is a trademark or registered trademark of GeneXus. All other trademarks mentioned herein are the property of their respective owners.



INTRODUCTION	3
GXFLOW ENTRY POINT	3
GXFLOW CUSTOM CLIENT	4



INTRODUCTION

GXflow Standard Client is an application that allows users to access GXFlow Inbox, Outbox, My Processes, My Performance, and other applications called 'components'.

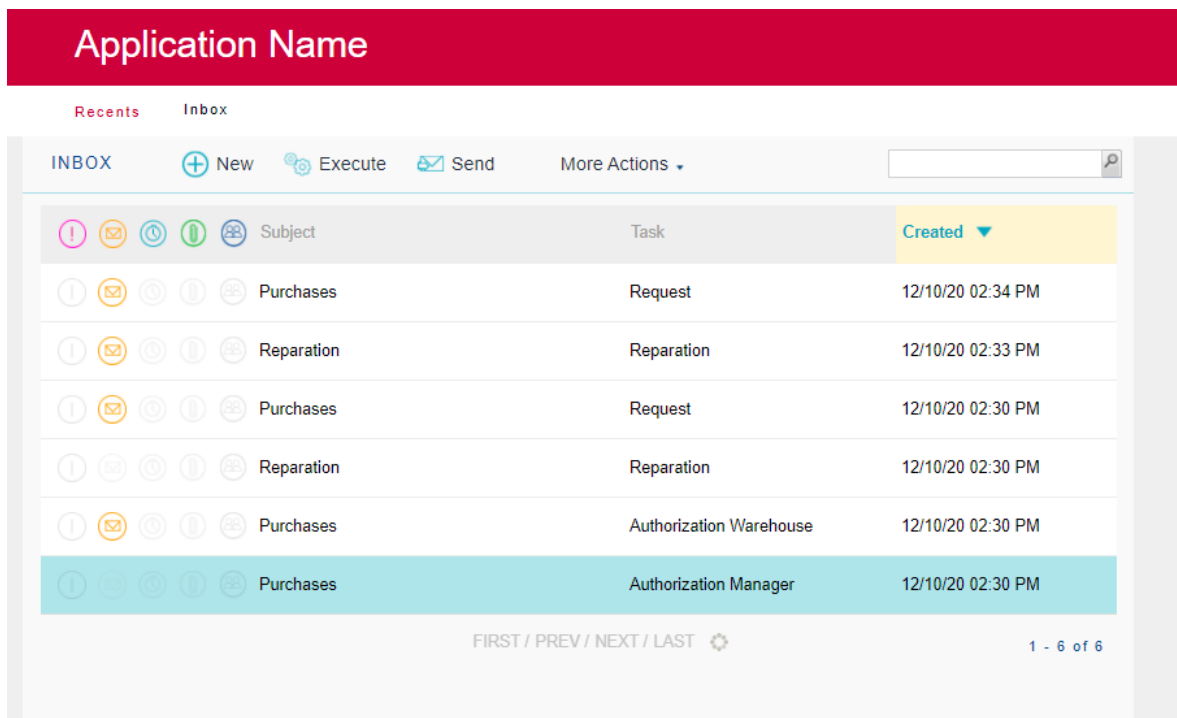
These components allow users to interact with the workflow engine to create, execute, and/or submit BPD tasks. However, sometimes it is necessary to access these components from another generated application or a custom client is required.

GXFLOW ENTRY POINT

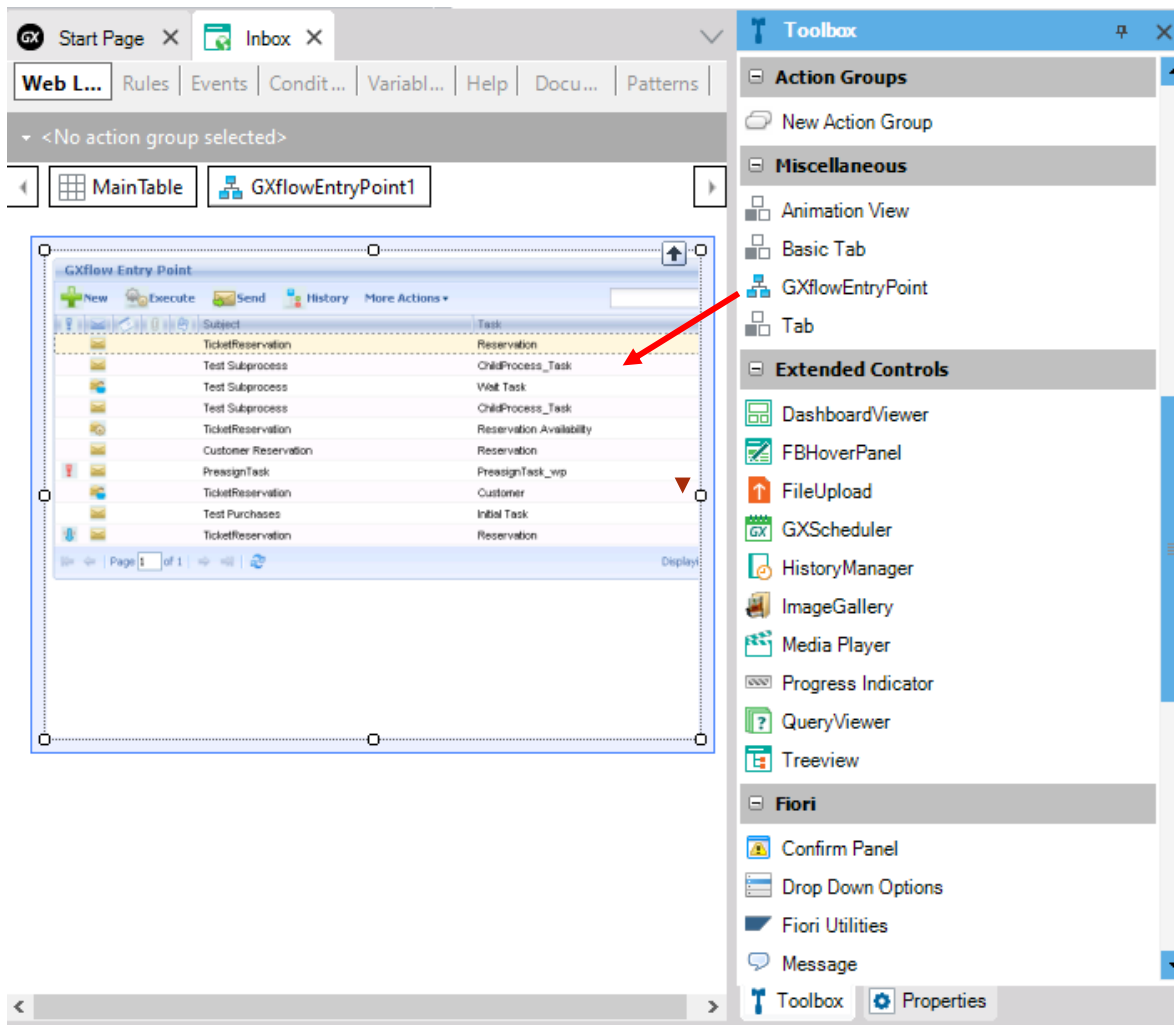
To integrate GXflow components in a GeneXus application, GXflow Entry Point must be used. It is a user control distributed with GeneXus that can be found in the GeneXus installation folder in: /Packages/Gxpm/Extra/GXflowEntryPoint.

It allows us to embed any of the GXflow components (Inbox, Outbox, History, etc.) within any other generated application.

It is installed in a similar way as the rest of the GeneXus user controls.



To use the control, create a Web Panel and drag the control from the Toolbox to its form.



Next, configure the following properties:

- Entry Point (Inbox, Outbox, History, Tasks, etc.)
- User
- Password

Lastly, run the application.

For more details on this control, you can visit the wiki.

<http://wiki.genexus.com/commwiki/servlet/wiki?10721>

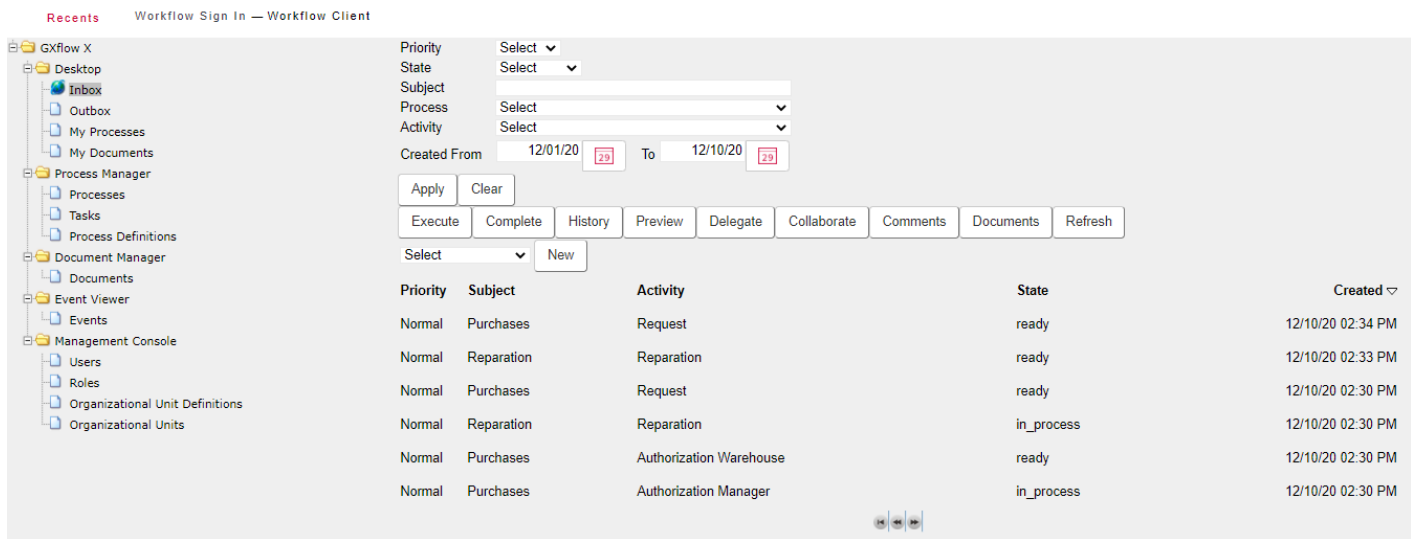
GXFLOW CUSTOM CLIENT

It is a set of objects (xpz) that use the GXflow API and implement the GXflow client.

This xpz is open, meaning that the user can consolidate it and make changes to the client, with regard to both appearance and behavior.

It is distributed with GeneXus within the installation path. Before importing it, it is important to have created a Business Process Diagram to ensure that the model has the Workflow data types; otherwise, an error will occur during compilation.

WorkflowClient is the Web panel that centralizes the client, and at runtime it looks as follows:



The .xpz file is located at: (<GeneXus directory>\Packages\Gxpm\Extra\CustomClient.xpz).

To learn more about the GXflow Custom Client, visit the following wiki link:

<https://wiki.genexus.com/commwiki/servlet/wiki?11364,HowTo%3A+Customize+The+GXflow+Client>



MONTEVIDEO - URUGUAY
CIUDAD DE MÉXICO - MÉXICO
MIAMI - USA
SÃO PAULO - BRASIL
TOKYO - JAPAN

Av. Italia 6201- Edif. Los Pinos, P1
Hegel N° 221, Piso 2, Polanco V Secc.
7300 N Kendall Drive, Suite 470
Rua Samuel Morse 120 Conj. 141
2-27-3, Nishi-Gotanda
Shinagawa-ku, Tokyo, 141-0031

(598) 2601 2082
(52) 55 5255 4733
(1) 201 603 2022
(55) 11 4858 0300
(81) 3 6303 9381
(81) 3 6303 9980