

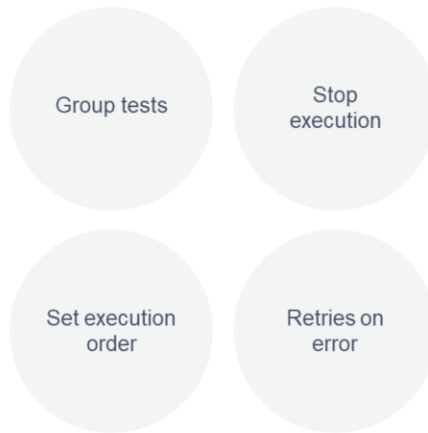
GeneXus[™]
by **Globant**

Test Suite

GeneXus[™]
© 2018

Test Suite benefits

GeneXus™
by Globant



With the Test Suite object, you can group tests to run them like an execution unit. Also, you can set the order in which they will execute, set if they retry in the event of an error, and set to stop the execution when some of them fail.

Additionally, you can set setup and tear down procedures to be executed before and after the execution of the tests.

Test Suites in GeneXus

GeneXus™
by Globant



Unit Tests



Rest Tests



Web UI Tests

In GeneXus, it is possible to create a Test Suite that defines a sequence of tests that can be run in the specified order with several execution settings.



NewTransferSuite



CreditCardSuite

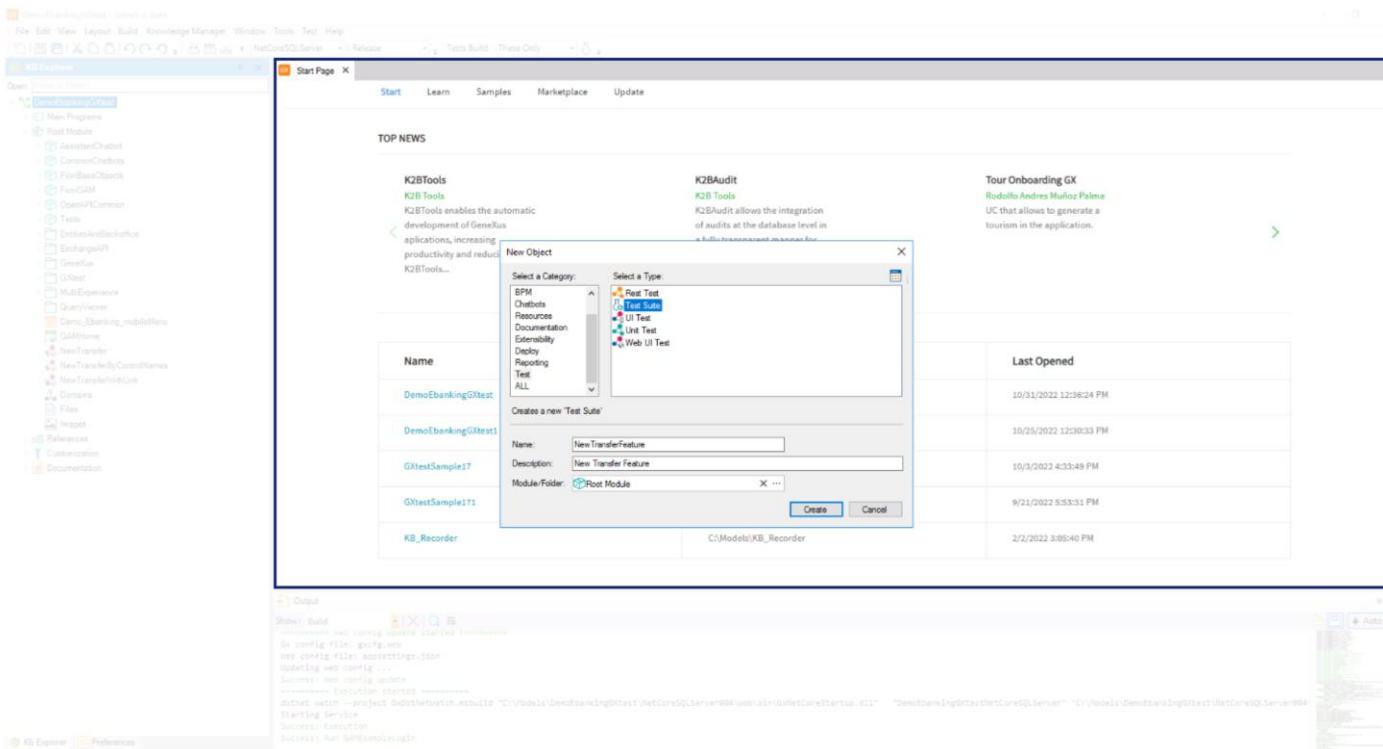


TransferExternalBankSuite

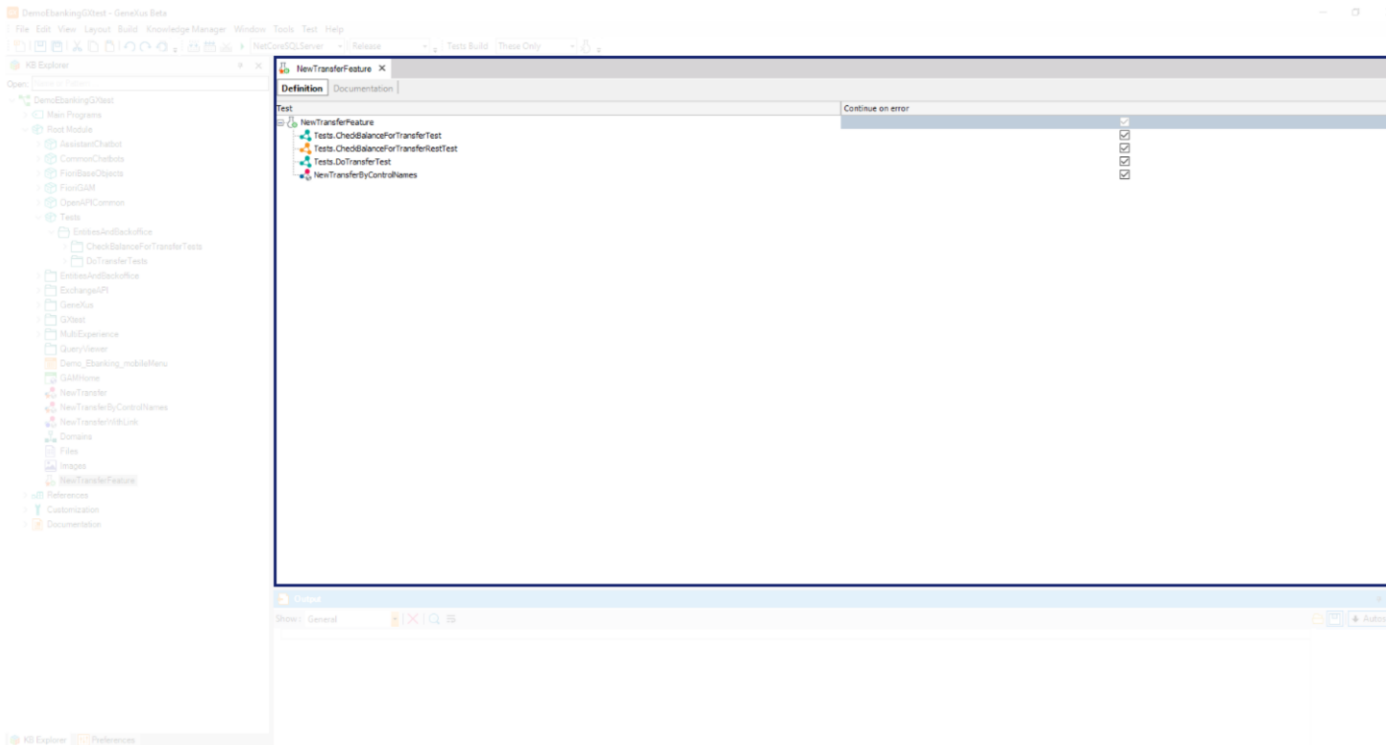
So, you will be able to create Test Suites grouping tests by a specific criterion such as functionality.

Creating the first Test Suite

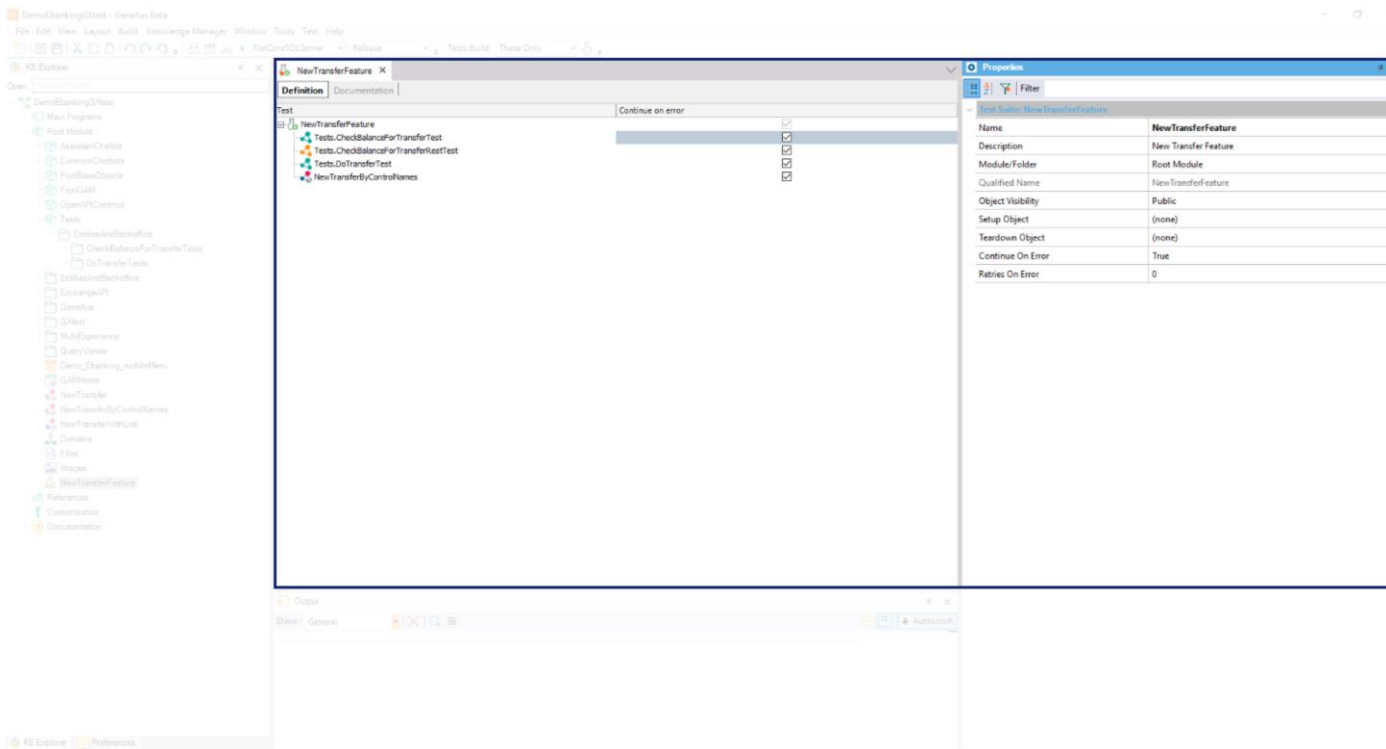
GeneXus[™]
by Globant



To create a Test Suite, select File > New > Object > Test > Test Suite



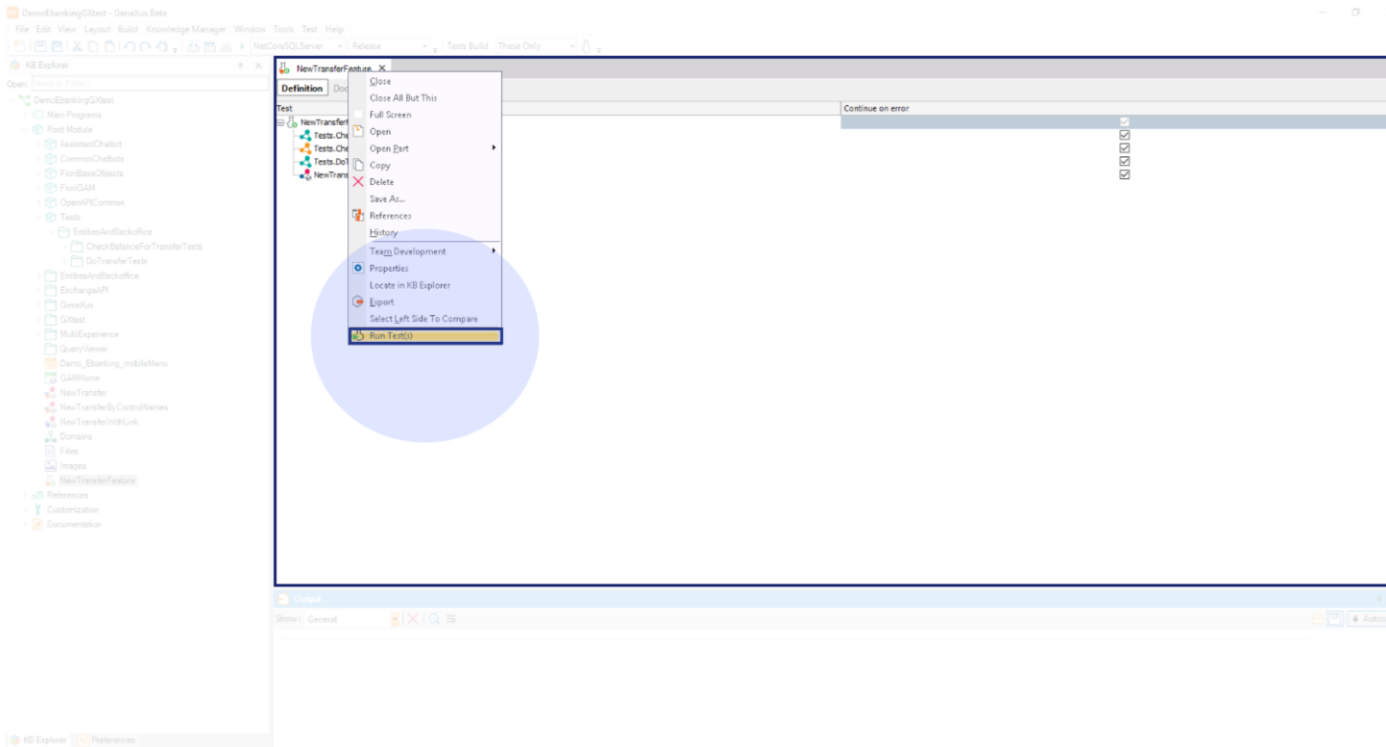
After creating the object, you can include tests inside it by dragging and dropping from KB explorer or by typing their names in every new line in the same way you add variables. You can also reorder them and set their properties selecting each test line.



The Test Suite has a list of properties that you can set.

For example, the Setup Object is an object that you can set to run before running the suite, typically to call some procedure to set the database status. The Teardown object is called after running the tests.

Continue On Error and Retries On Error properties are analogous to the properties for the tests inside suites. They allow you to choose whether continuing or not executing following suites in case the current suite fails, and to retry the current suite if it fails, respectively.



Let's run the created suite!

Tests Results X

Start: 2022-11-22 19:10:50 End: 19:11:25 Elapsed: 35 secs

Tests ran: 4

2 ✔ 2 ✘

Execution results

- ✘ NewTransferFeature: OK (364 ms)
- ✔ Tests CheckBalanceForTransferTest (364 ms)
- ✘ Tests CheckBalanceForTransferRestTest (2 secs)
- ✔ Tests DoTransferTest (120 ms)
- ✘ NewTransferByControlNames (31 secs)

Test suite execution details

✘ NewTransferFeature

Start: Tuesday, November 22, 2022 7:10:50 PM
Elapsed time: 35 secs

Summary	Count	Percentage
Successful	2	50.00%
Error	2	50.00%
Total	4	100.00%

Set as expected

Output

Show: C:\test

```

Command Click(bttrn_enter) started
Command Click(bttrn_enter) OK took 1135ms
Command GetText(transferSenderaccountbalance,1) started
Command GetText(transferSenderaccountbalance,1) OK took 91ms. Returned '98000.00'
Command ClickByCSS(#000_AGUSER_HPAGContainer_btnGroupDrop > span) started
Command ClickByCSS(#000_AGUSER_HPAGContainer_btnGroupDrop > span) OK took 577ms
Command ClickByCSS(11:nth-child(2) > a:img > span:nth-child(2)) started
Command ClickByCSS(11:nth-child(2) > a:img > span:nth-child(2)) OK took 1116ms
ENDED Web UI test NewTransferByControlNames. Result: ERROR. Elapsed: 31799 ms
-----
ENDED suite NewTransferFeature. Result: ERROR
Execution ended successfully
Coverage data file for this execution was saved in 'C:\Medix\DemoEbankingG\test\NetCoreSQLServer004\web\igetestTraceFile_20221122_071050.pd'.
Success: Run Tests

```

Execution results are shown in the Tests Results window. By default, if a test fails, the next ones are executed. You can change this behavior setting the *Continue on error* property to *False*. In the same way, you could set to retry a test if it fails in the context of the Test Suite.

GeneXus[™]
by **Globant**

training.genexus.com
wiki.genexus.com