

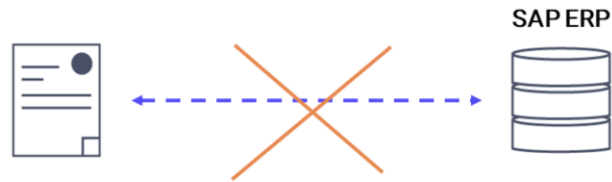
Knowledge Base design

Case study: Sales business process

Let's start to create our work environment.

The case study we are going to use to develop the course is focused on the orders placed by a customer, as a sub-process within the Sales business process.

Sales business process: Order entry



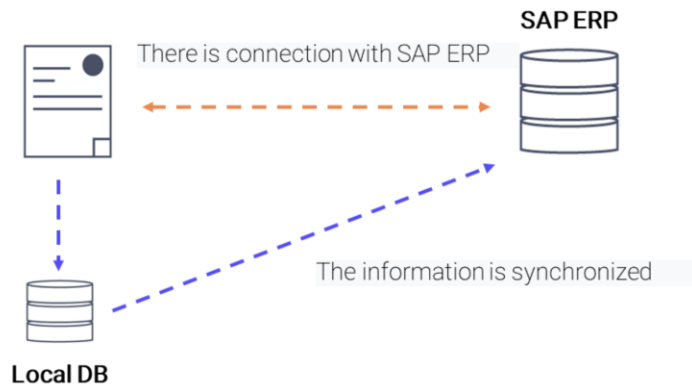
When a customer order is entered, under certain conditions, it may happen that there is no connection to SAP ERP. It could be, for example, because we are implementing a POS type solution where this situation may occur, or when there is no connection due to SAP ERP maintenance or updates.

Sales business process: Order entry



For this reason, the development of a system integrated into SAP ERP for entering sales orders is requested. The above situation should be considered; that is to say, it should not only be possible to obtain and send information to the ERP when a connection is available, ..

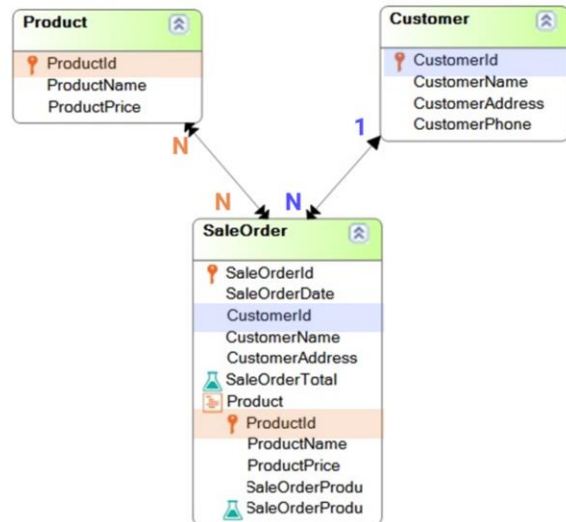
Sales business process: Order entry



..but the system should also have its own database for when there is no connection in order to synchronize the information when it is possible to do so.

Knowledge Base design

- **Customer** transaction
- **Product** transaction
- **SaleOrder** transaction

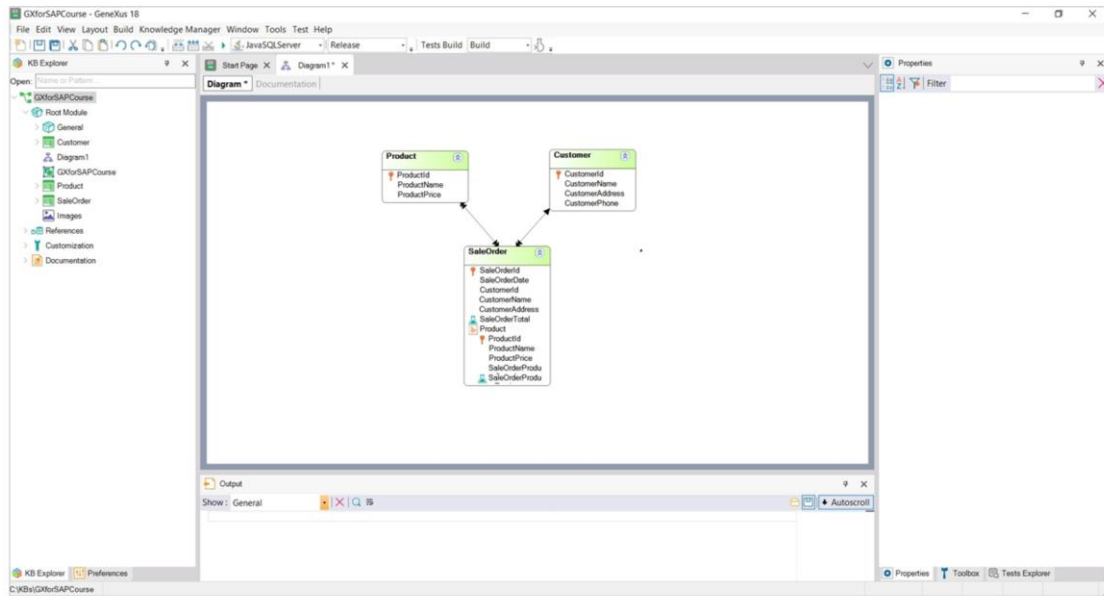


To this end, we will create in GeneXus a database with three transactions:

- Customer
- Product
- Sales Order

They are related to each other according to the following diagram.....where a sales order belongs to a customer and is also related to many products.

Knowledge Base design



Let's see it in GeneXus:

We have created the knowledge base called GXforSAPCourse with the Java generator, and for now we have left the default DBMS, which is SQL server.

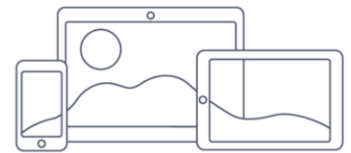
We see the transactions Product... Customer... and SalesOrder.

Knowledge Base design: some considerations

Design System: GeneXus Fiori pattern

SAP Hana DBMS

Deployment to SAP Business Technology Platform



However, since this system is integrated into SAP ERP, we must take into account certain considerations:

- First, an important point is the Design System to use because the application must have the same look&feel as SAP ERP. We will then use the GeneXus Fiori pattern, which will not only make the development work easier, but will also provide a product with a similar User Experience to that of SAP ERP.
- A second point to consider is the database that we will use to store our application data. Since this development is integrated into SAP ERP, it is desirable for the Customer to be familiar with SAP products. That's why we will use the SAP Hana DBMS.
- Finally, and for the same reason, we will deploy the application to SAP BTP (SAP Business Technology Platform), the SAP cloud.

Next, we will make these specifications and run the application.

The logo for GeneXus by Globant. The word "GeneXus" is written in a white, sans-serif font with a trademark symbol (TM) to its upper right. Below it, the words "by Globant" are written in a smaller, white, sans-serif font.

GeneXus™
by Globant

training.genexus.com