

Installation and first run of GeneXus Trial

July 2022

Content

Generalities	2
GeneXus Trial limitations	2
General requirements	2
Microsoft SQL Server	2
GeneXus Account	2
GeneXus Trial installation.....	4
GeneXus Trial download	4
GeneXus Trial installation.....	4
First run of GeneXus Trial.....	6
Knowledge Base creation	7
Transaction creation	7
Application run.....	8
Links of interest.....	9

Generalities

The GeneXus Trial version allows you to get to know and explore most of the GeneXus features and functionalities, as well as to gain perspectives on the GeneXus philosophy.

GeneXus Trial limitations

It is a fully functional version. The generators currently enabled, NetFramework and Android, are authorized with a single Site Key that expires 60 days after activation, and must be installed by a single user locally.

Other restrictions:

- A maximum of 90 attributes can be created.
- A maximum of 250 objects can be created.
- The application is generated in the cloud provided by GeneXus, so it is necessary to have access to the Internet.

General requirements

Microsoft SQL Server

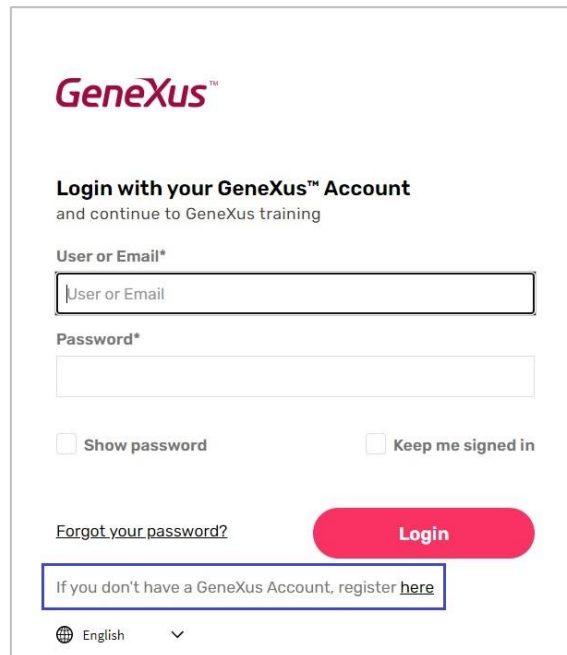
In order to be able to create the database that stores the objects defined in the application, GeneXus needs a local instance of SQL Server.

The GeneXus Trial setup automatically installs the SQL Express LocalDB instance (if one previously installed on the computer is not detected). If the computer already has an instance of SQL Server you can use it.

GeneXus Account

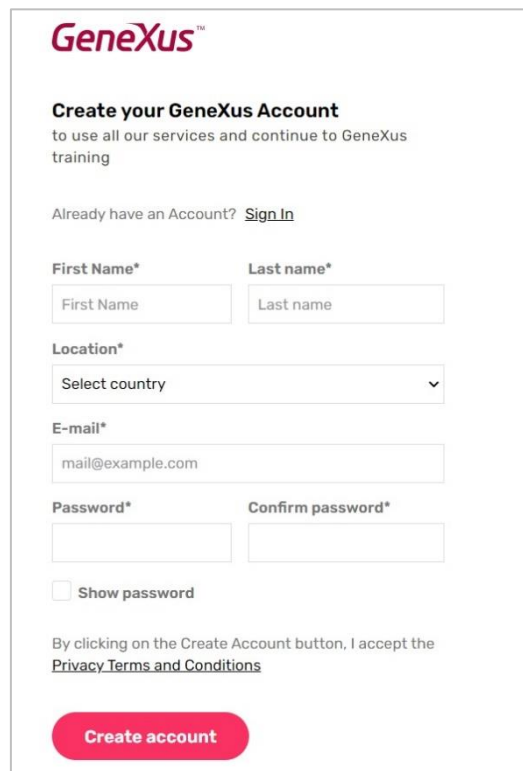
As the Trial version generates the application in the cloud provided by GeneXus, at the time of execution a GeneXus Account is required to validate access to said cloud.

If you already have a GeneXus Account, you can use it. Otherwise, you must create your GeneXus Account from [here](#).



The login form features the GeneXus logo at the top. Below it, the heading 'Login with your GeneXus™ Account' is followed by the instruction 'and continue to GeneXus training'. The form includes two input fields: 'User or Email*' and 'Password*'. There are two checkboxes: 'Show password' and 'Keep me signed in'. A link 'Forgot your password?' is positioned to the left of a red 'Login' button. Below the login button, a message states 'If you don't have a GeneXus Account, register [here](#)'. At the bottom left, there is a language selector showing 'English' with a dropdown arrow.

Complete the data required for the creation of the Account:



The create account form displays the GeneXus logo and the heading 'Create your GeneXus Account', with the instruction 'to use all our services and continue to GeneXus training'. A link 'Already have an Account? [Sign In](#)' is provided. The form contains several input fields: 'First Name*' and 'Last name*' (each with a placeholder), 'Location*' (a dropdown menu with 'Select country' and a downward arrow), 'E-mail*' (with placeholder 'mail@example.com'), 'Password*', and 'Confirm password*'. A 'Show password' checkbox is located below the password fields. At the bottom, a statement reads 'By clicking on the Create Account button, I accept the [Privacy Terms and Conditions](#)', followed by a red 'Create account' button.

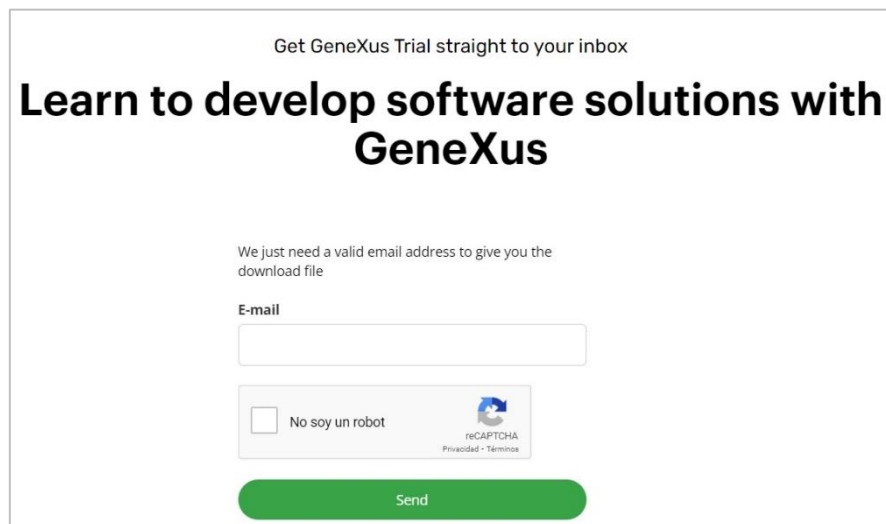
Always remember the indicated email and password since you must use them when executing your application in the GeneXus cloud.

GeneXus Trial installation

The first step is to download the GeneXus Trial version

GeneXus Trial download

You can download from [here](#).



Get GeneXus Trial straight to your inbox

Learn to develop software solutions with GeneXus

We just need a valid email address to give you the download file

E-mail

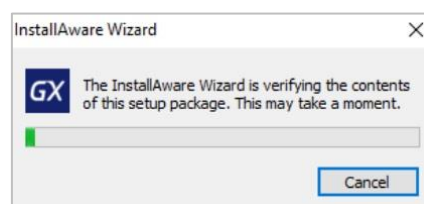
☐ No soy un robot

reCAPTCHA
Privacidad • Términos

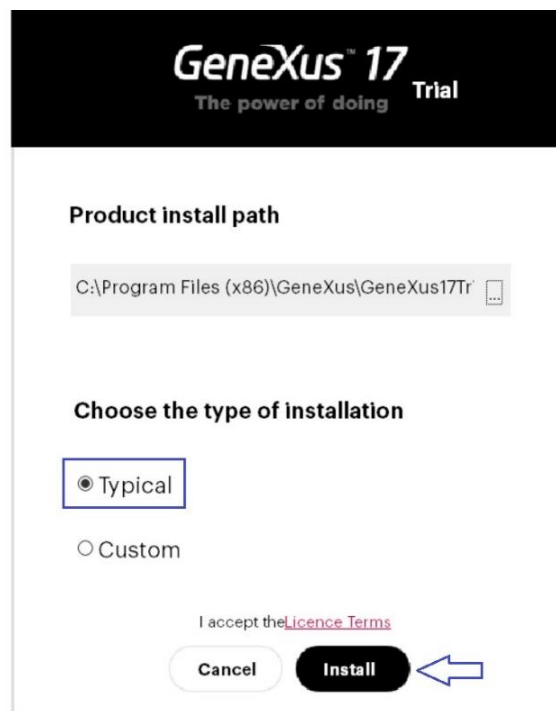
Send

GeneXus Trial installation

After the download is complete, run the GeneXus installation file (note that you must have Administrator permissions and full control over the installation destination folder):

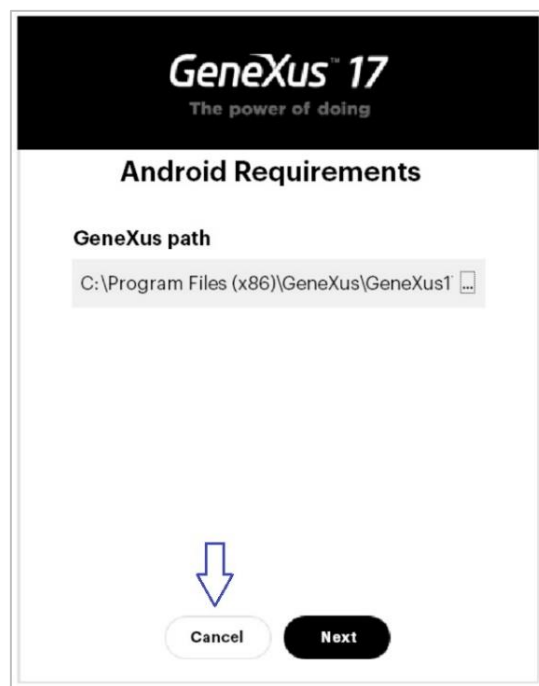


Once the contents of the Setup have been verified, select the **Typical** installation type, and press **Install**:

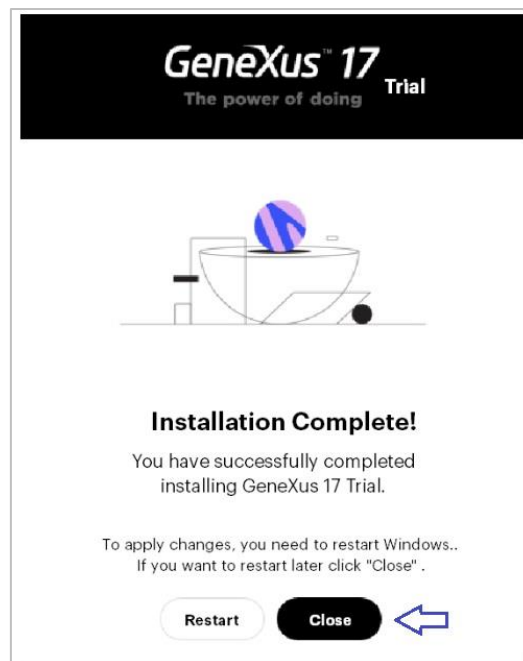


Wait until the installation process is complete.

Once finished, it will offer to install the Android SDK. Skip it by pressing Cancel, as you will install it later when this topic is studied in your course.



Finish the installation. Select **Close**:

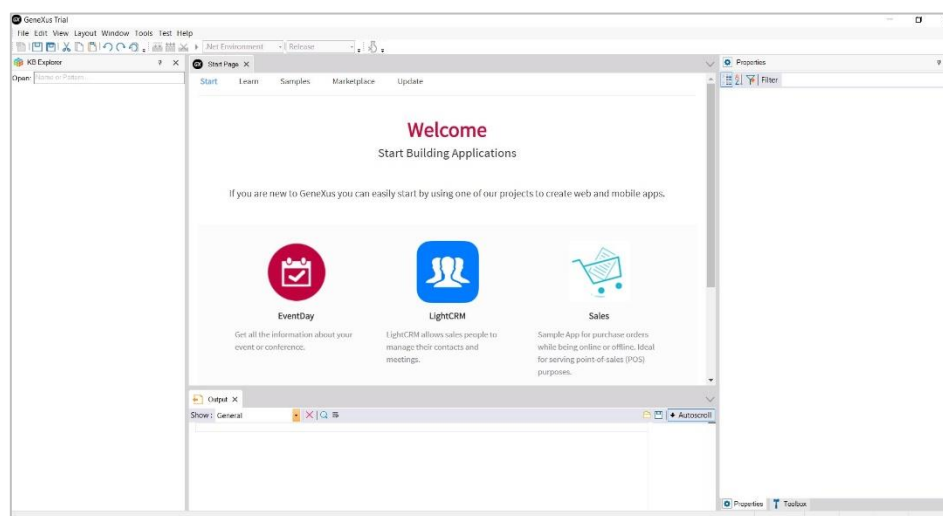


At this point you can start working with GeneXus. If you want to verify that everything is working properly, try the following steps.

First run of GeneXus Trial

Look for the GeneXus Trial icon on your desktop and run it.

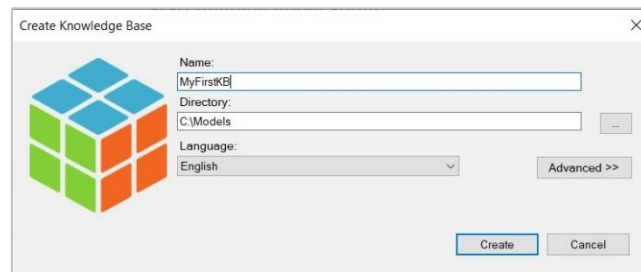
You will see the following screen, which corresponds to the GeneXus IDE



Knowledge Base creation

The first step is to create a Knowledge Base: File / New / Knowledge Base.

In the following box, indicate the name of the Knowledge Base, for example, MyFirstKB:



Press Create. The creation process will begin:

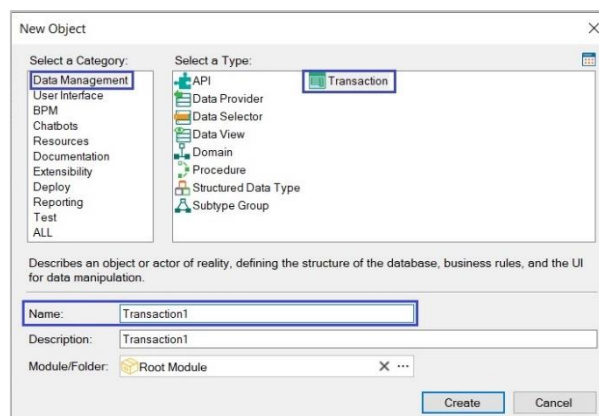


Once finished, you can create the first GeneXus object.

Transaction creation

From the File menu, select New / Object

Select the type of Transaction object and leave the name that appears by default:



Press Enter, and define the attribute name Transaction1Id, as shown:

Name	Type	Formula	Description	Nullable
Transaction1	Transaction1		Transaction1	
Transaction1Id	Numeric(4,0)		Transaction1 Id	No

Application run

To run the application, press the **F5** key. You will see a box like the one below, requesting the identification of your GeneXus Account.

Indicate email and password. Press **Sign In**

GeneXus Account Authentication

Create a GeneXus account or Sign in

Please, enter your email address below:

☐ Remember me

Do you have a GeneXus account?

☐ No, I'm new in GeneXus, I need to create an account

☒ Yes! I already have one and my password is:

[Forgot your password?](#)

In the next box press **Create**:

The Database tables will be created.

This report describes how the Database tables will be created.
Please select Create to proceed or Cancel.

Pattern:

☒ Transaction1

Table Transaction1 specification

Table name: Transaction1

Transaction1 is new

Table Structure

Attribute	Definition	Previous values	Takes value from
<input checked="" type="checkbox"/> Transaction1Id	Numeric (4), Not null		

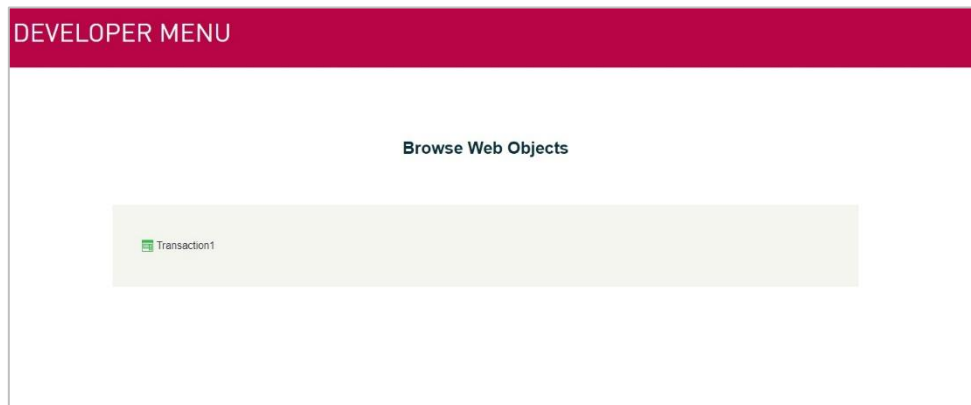
Indexes

Name	Definition	Composition
ITRANSACTION1	primary key Clustered	<input checked="" type="checkbox"/> Transaction1Id

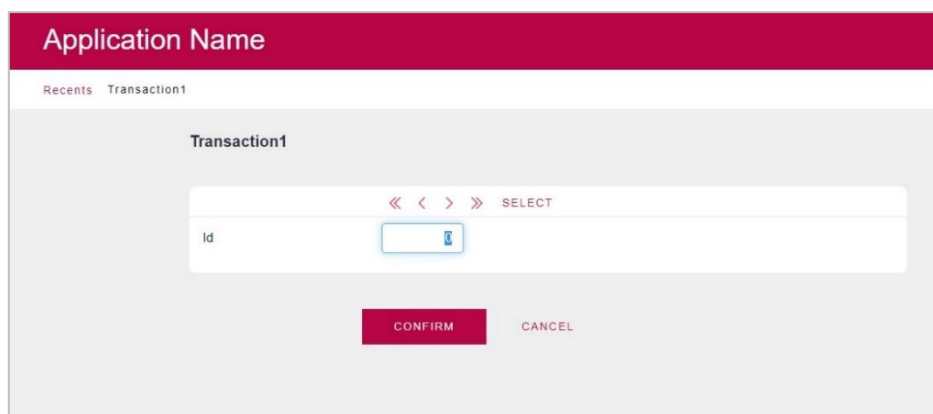
Statements

```
CREATE TABLE [Transaction1] (
  Transaction1Id Numeric(4,0) NOT NULL
```

Once the process is finished, you will see the following page in your browser:



Click on Transaction1 and you will see the following:



With this, it has proven that GeneXus was able to create the database and all the necessary programs to access it. It has also verified that GeneXus has created the Web application correctly.

If you were able to successfully complete all the test steps detailed in this document, you are ready to use GeneXus for your training.

We suggest you visit the links below and any inconvenience, please send an email to training@genexus.com.

Links of interest

- [GeneXus documentation wiki](#)
- [GeneXus Training Site](#)