

First run of GeneXus Learning / GeneXus Full

July 2022

Content

Generalities 2

Firs run of GeneXus 2

 Knowledge Base creation 2

 Transaction creation 3

 Application run 4

Links of interest 6

Generalities

Both GeneXus Full and GeneXus Learning allow two forms of prototyping:

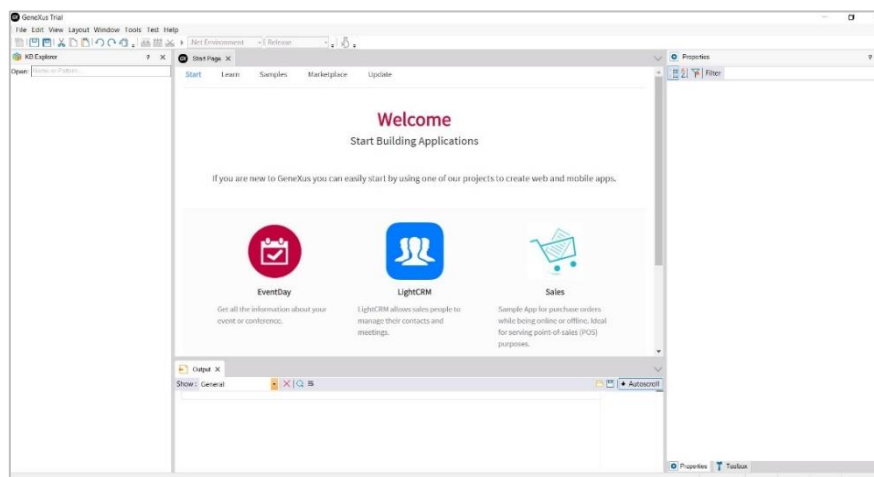
- Local
- On the cloud

The steps indicated below allow you to carry out a test prototyping locally, to verify the correct installation.

It is assumed that the corresponding GeneXus Learning or GeneXus Full license is already installed and authorized.

First run of GeneXus

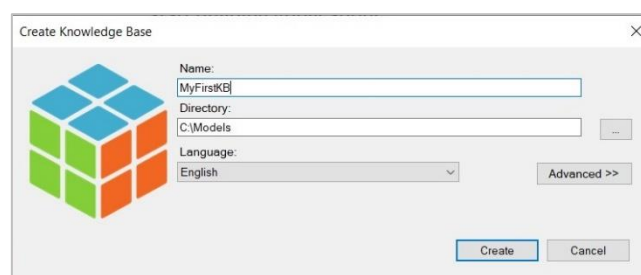
Look for the GeneXus icon on your desktop and run it. You will see the following screen, which corresponds to the GeneXus IDE.



Knowledge Base creation

The first step is to create a Knowledge Base: File / New / Knowledge Base.

In the following box, indicate the name of the Knowledge Base, for example, MyFirstKB:



Press **Create**. The creation process will begin:

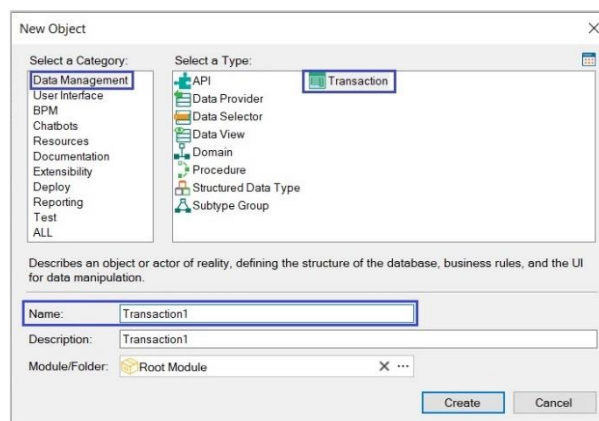


Once finished, you can create the first GeneXus object.

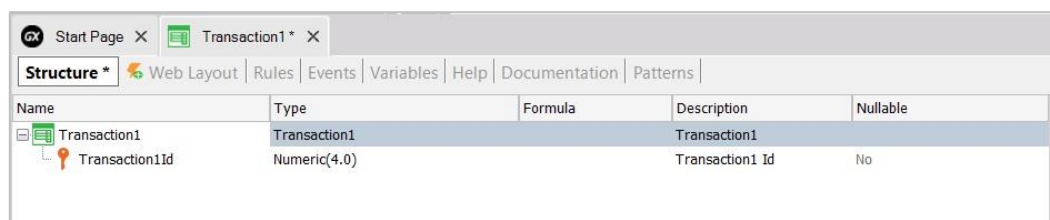
Transaction creation

From the File menu, select **New / Object**

Select the type of Transaction object and leave the name that appears by default:



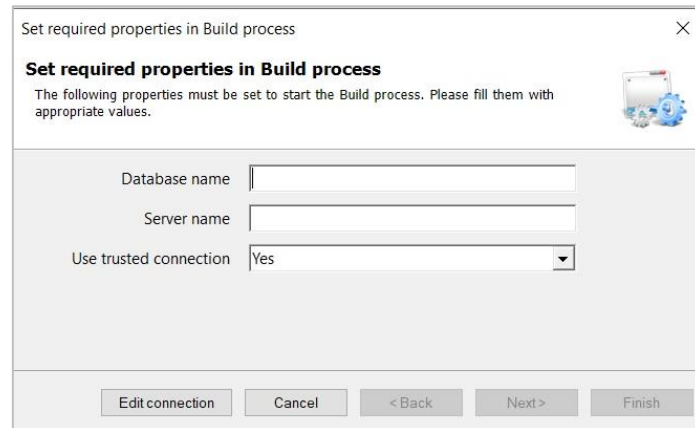
Press **Enter**, and define the attribute name **Transaction1Id**, as shown:



Application run

To run the application, press the **F5** key. You will see a box like the one below, requesting the data to connect to your database server.

You must indicate the name of the database, and the name of the server instance:

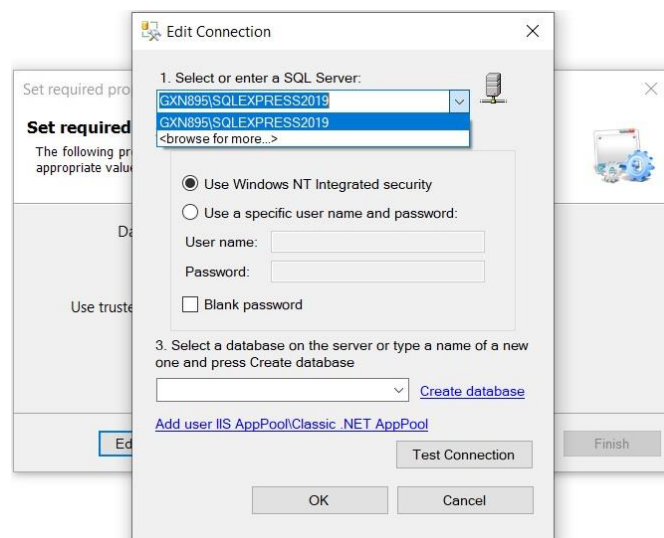


The dialog box is titled "Set required properties in Build process". It contains the following fields and controls:

- Database name:** A text input field.
- Server name:** A text input field.
- Use trusted connection:** A dropdown menu currently set to "Yes".
- Buttons:** "Edit connection", "Cancel", "< Back", "Next >", and "Finish".

If you don't remember, for example, the name of your server instance, press the **Edit connection** button.

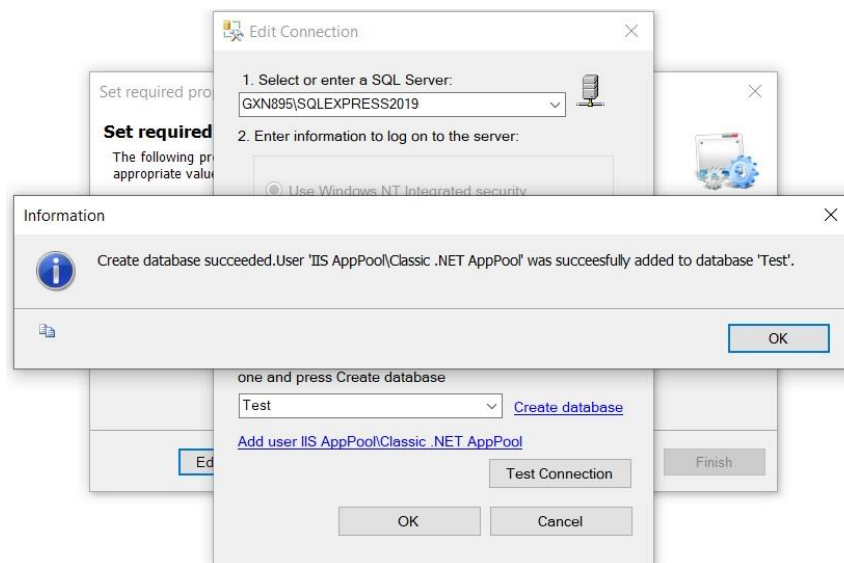
From here you will be able to select the server from the list that is offered,



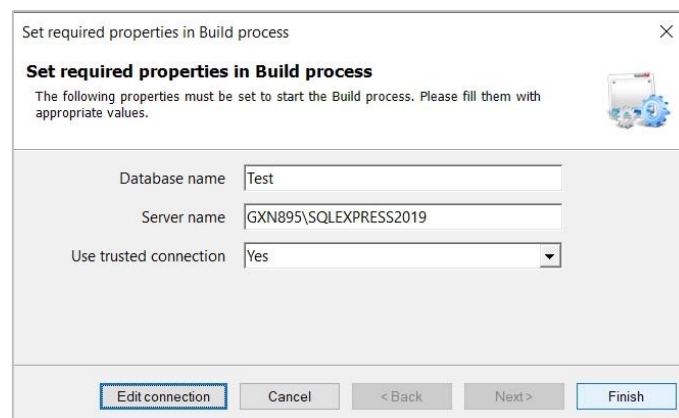
The "Edit Connection" dialog box is shown over the "Set required properties" dialog. It contains the following sections and controls:

- 1. Select or enter a SQL Server:** A dropdown menu showing "GXN895\SQLEXPRESS2019" and a "<browse for more...>" link.
- Security options:**
 - ☒ Use Windows NT Integrated security
 - ☐ Use a specific user name and password:
 - User name: [text input]
 - Password: [text input]
 - ☐ Blank password
- 3. Select a database on the server or type a name of a new one and press Create database:** A dropdown menu and a "Create database" link.
- Additional options:** A link "Add user IIS AppPool\Classic .NET AppPool".
- Buttons:** "Test Connection", "OK", and "Cancel".

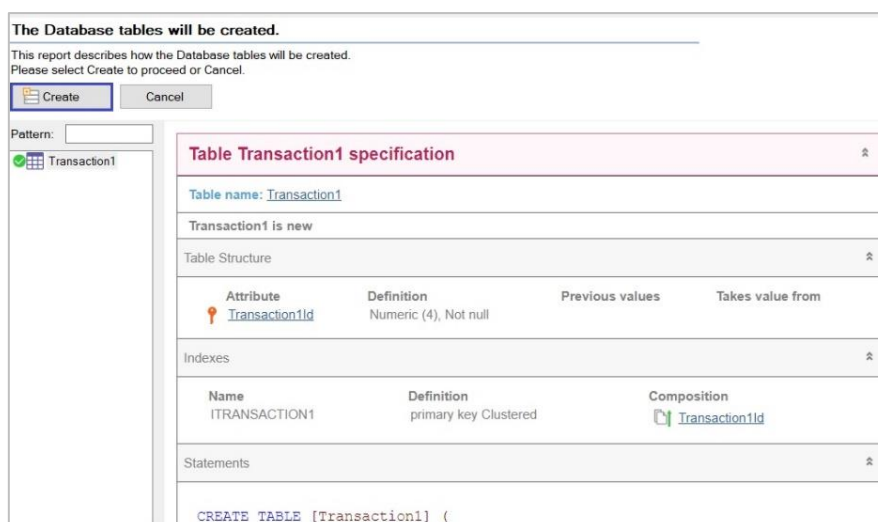
Enter a name for the database, for example Test, and press the link [Create database](#).



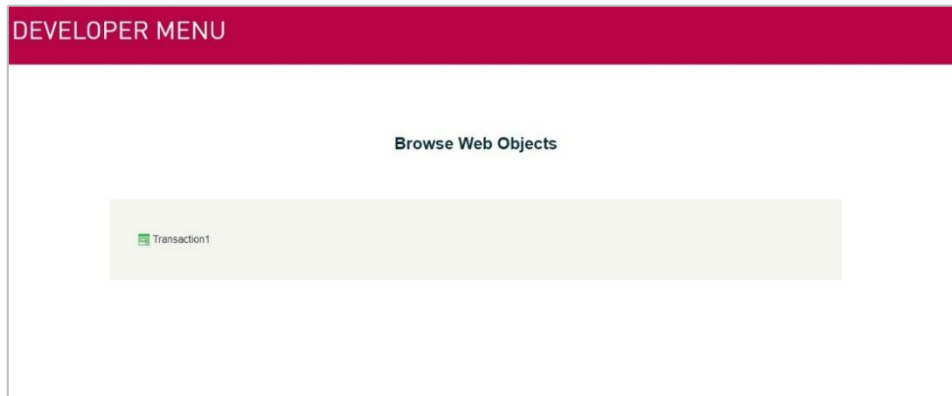
Press **Ok** to close the boxes, and finally press **Finish**:



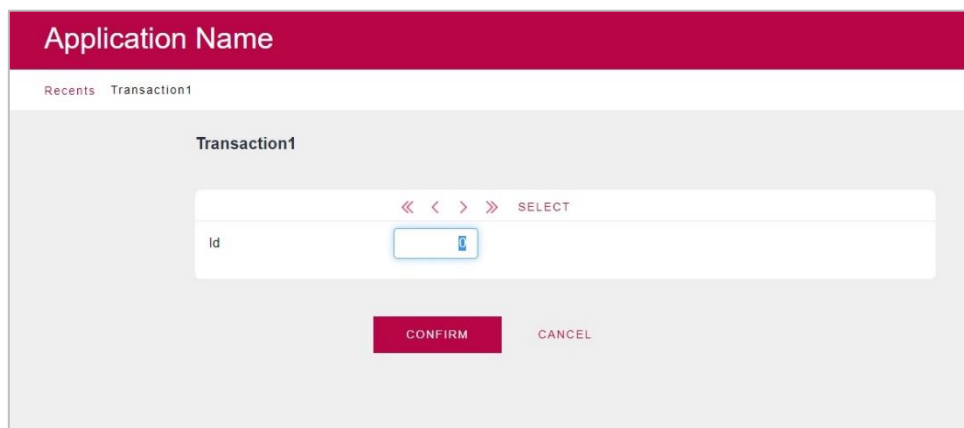
In the next box press **Create**:



Once the process is finished, you will see the following page in your browser:



Click on Transaction1 and you will see the following:



With this you have proven that GeneXus was able to create the Test database and create the corresponding table. It has also verified that GeneXus has created the Web application correctly.

If you were able to successfully complete all the test steps detailed in this document, you are ready to use GeneXus for your training.

We suggest you visit the links below and any inconvenience, please send an email to training@genexus.com.

Links of interest

- [GeneXus 17 hardware and software requirements](#)
- [GeneXus documentation wiki](#)
- [GeneXus Training Site](#)