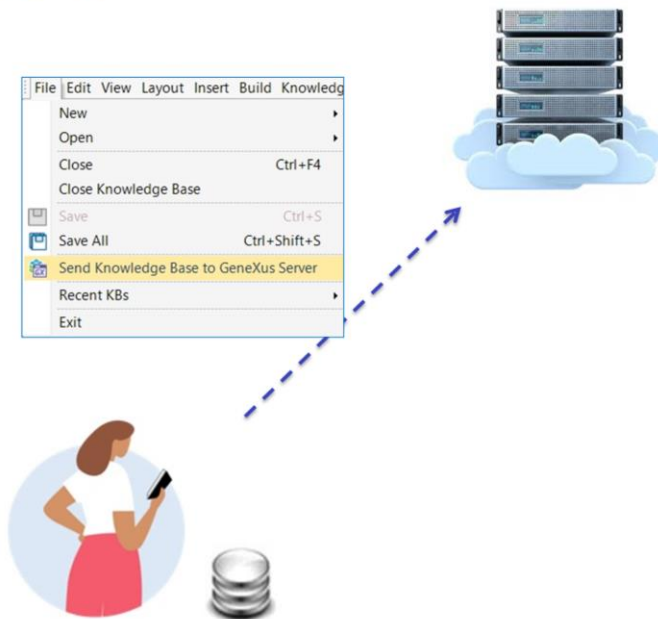


GeneXus Server

How to send a Knowledge Base to GeneXus Server

GeneXus™

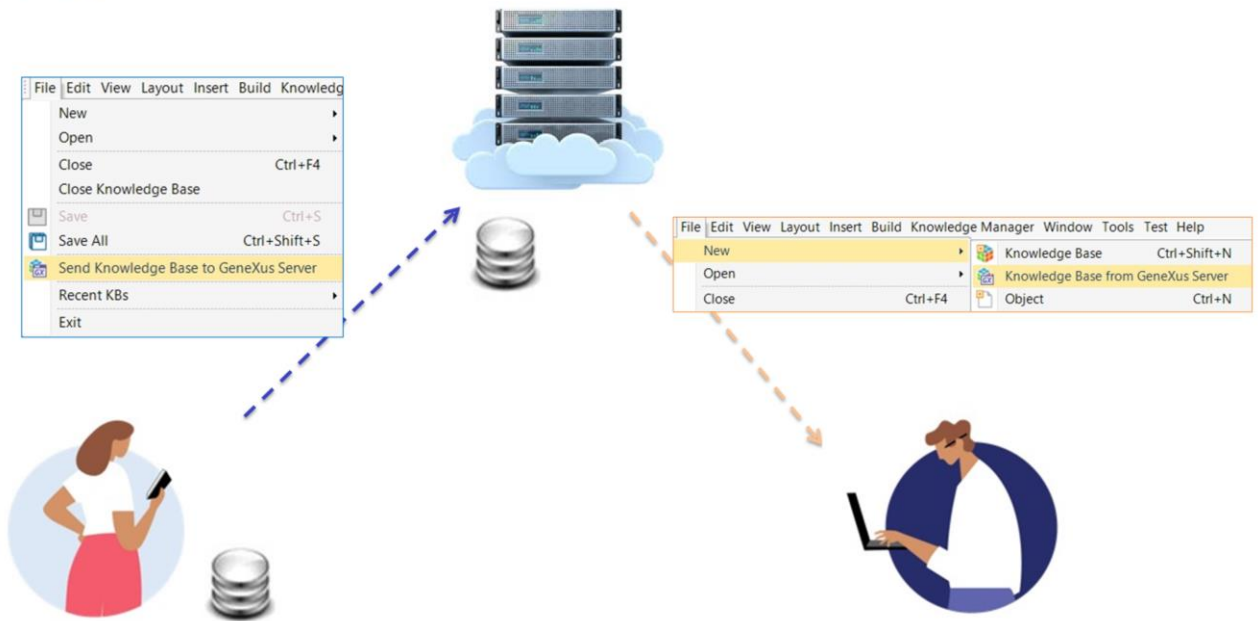
GeneXus Server



Let's focus for a few moments on the following scheme.

There's Mary, who is a member of a development team. At the beginning of the project, Mary creates the knowledge base and sends it to the server using the option Send Knowledge Base to GeneXus Server.

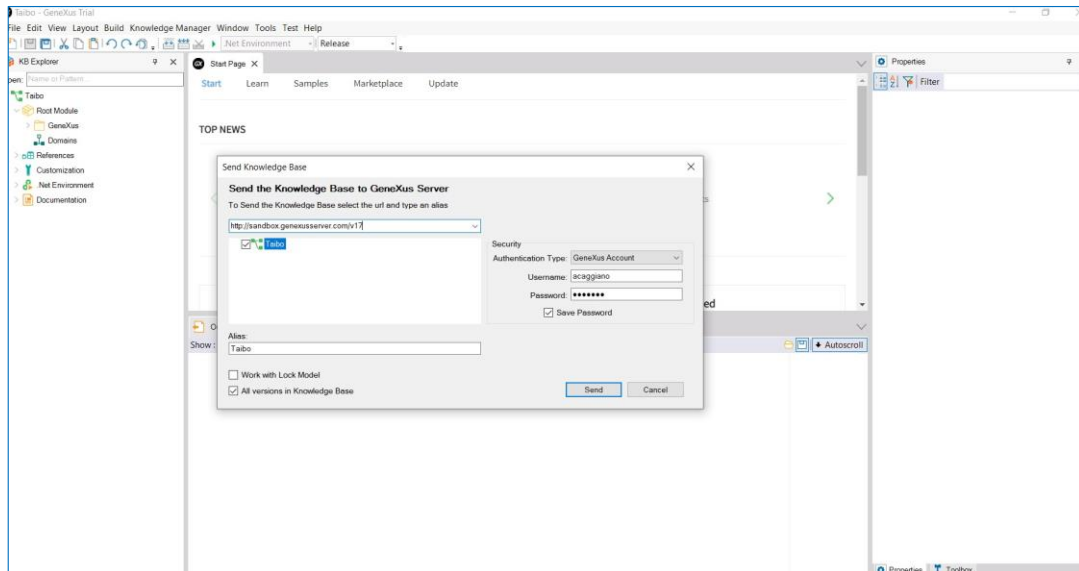
GeneXus Server



Next, Diego comes up, who is another member of the development team, and who wants to be connected to the server so that he can start working. For this Diego performs the operation New Knowledge Base from GeneXus Server.

Let's see these actions directly in GeneXus.

Send Knowledge Base to GeneXus Server



I have here my knowledge base named WorldCup to manage all the information related to an instance of the World Cup. My objective as a member of a development team is to send this knowledge base to be managed by GeneXus Server in order to start working together with other developers.

To do this, from the File option, I select Send Knowledge Base to GeneXus Server.

In this box, we must indicate the URL where the server is located and an alias to publish our knowledge base. In our example, we type KBWorldCup.

Then, the authentication mode to be used must be indicated. There are two options:

- GeneXus Account, and
- Local Authentication.

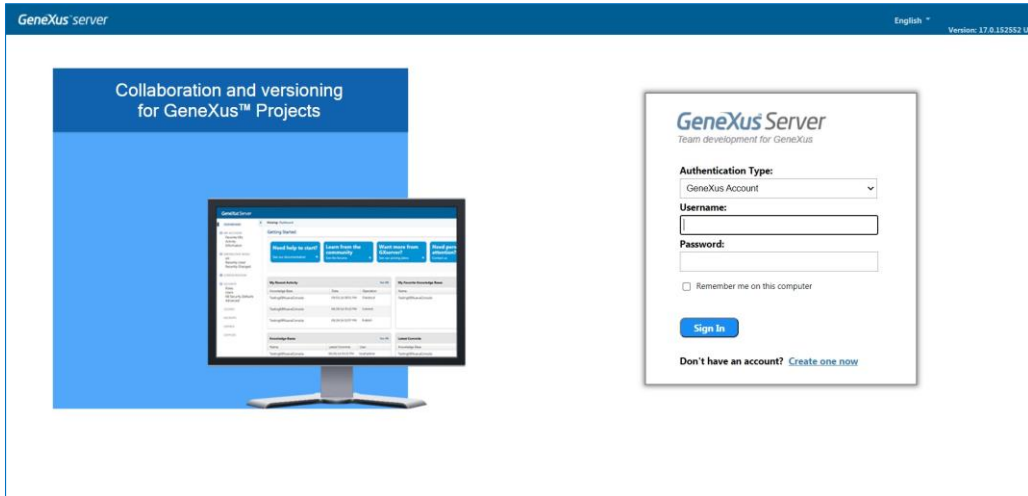
We select GeneXus Account, and then enter the username and password as shown here.

We press the Send button and in the output window we will be able to see the sending process.

The KB is now managed by the selected server instance, so other users will be able to connect to it.

In addition, note that from now on the local KB is synchronized with the KB on the server. This means that the developer can be part of a team environment by making updates and submitting his/her changes.

Web console



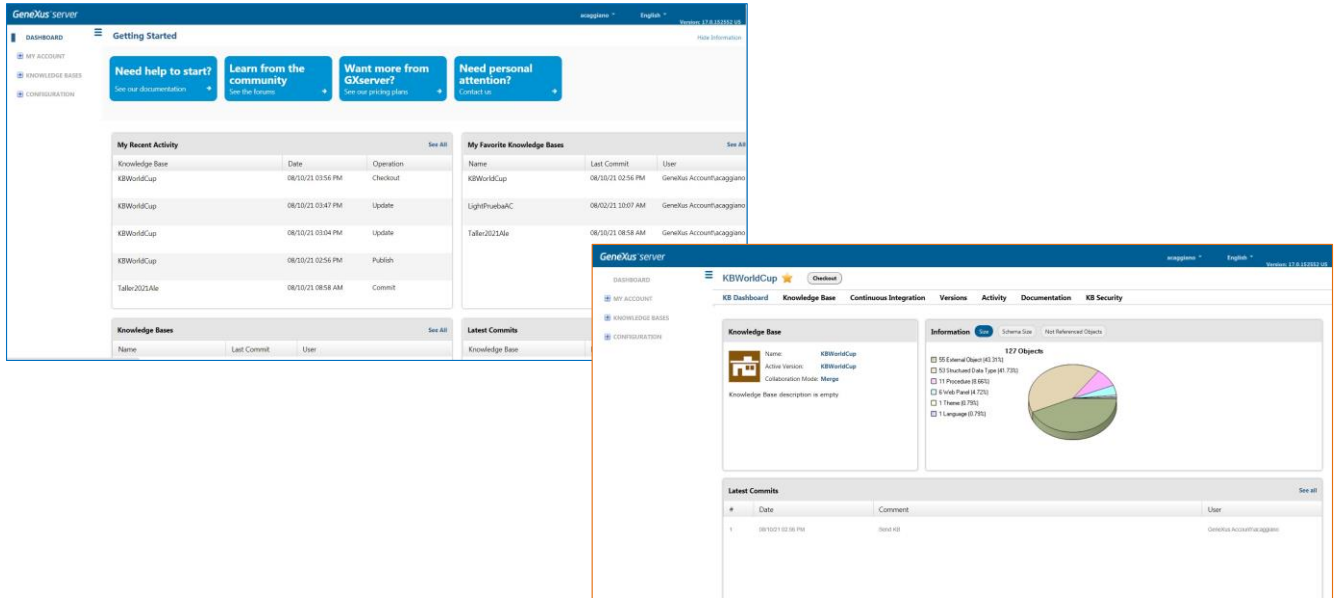
Now let's talk about the following:

Mary has just sent her knowledge base to be managed by the server. Is there any way to view this from the server? The answer is Yes.

Since it is a web application, and it has the corresponding server location URL, the only thing you need is a browser to use it.

After entering the username and password with the GeneXus Account authentication, we can log in. On this page, we see a catalog of the knowledge bases that have been published.

Web console



We can see here the recently published KBWorldCup knowledge base, and if we select it, we can access all its information.

However, we will deal with this topic a bit later.

GeneXus™

training.genexus.com
wiki.genexus.com
training.genexus.com/certifications