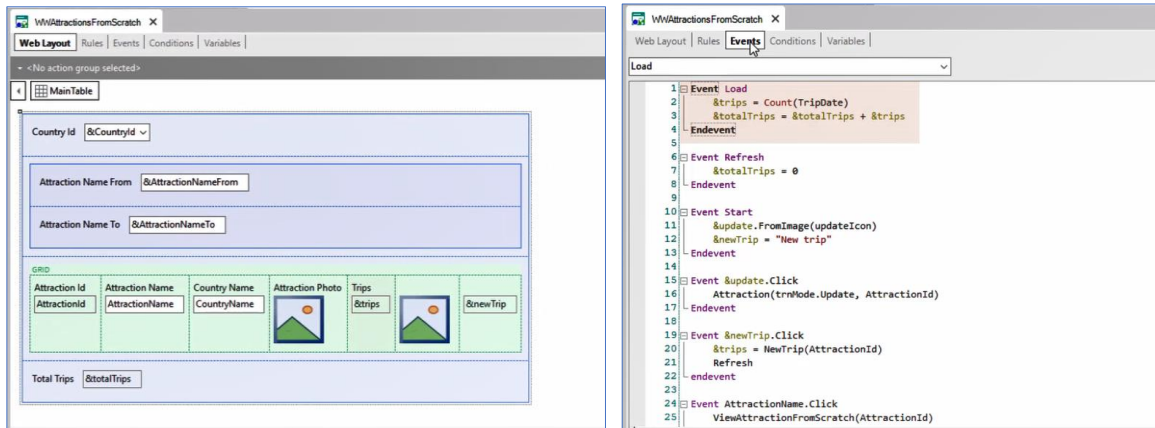


## **Interactive screens**

Variables in grid and actions in the Work With pattern

*GeneXus*<sup>™</sup>

## WWAttractionsFromScratch



The image shows two screenshots of the GeneXus IDE for the application 'WWAttractionsFromScratch'.

The left screenshot shows the 'Web Layout' view. It features a 'MainTable' with a 'CountryId' dropdown menu, two text input fields for 'Attraction Name From' and 'Attraction Name To', a grid, and a 'Total Trips' label. The grid has columns for 'Attraction Id', 'Attraction Name', 'Country Name', 'Attraction Photo', 'Trips', and '&newTrip'. The 'Trips' column contains a small image icon, and the '&newTrip' column contains a text input field.

The right screenshot shows the 'Events' view. The 'Load' event is selected, and the following code is visible:

```

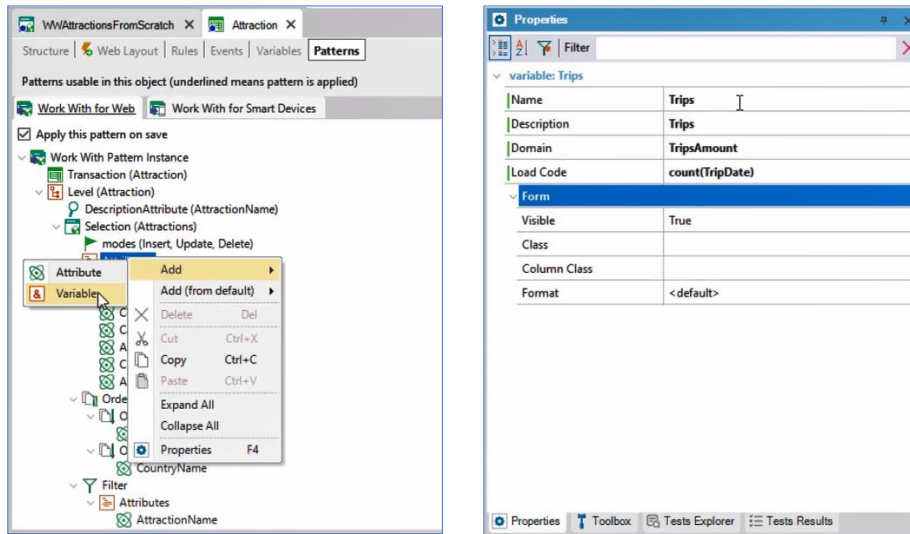
1 Event Load
2   &trips = Count(TripDate)
3   &totalTrips = &totalTrips + &trips
4 -Endevent
5
6 Event Refresh
7   &totalTrips = 0
8 -Endevent
9
10 Event Start
11   &update.FromImage(updateIcon)
12   &newTrip = "New trip"
13 -Endevent
14
15 Event &update.Click
16   Attraction(trnMode.Update, AttractionId)
17 -Endevent
18
19 Event &newTrip.Click
20   &trips = NewTrip(AttractionId)
21   Refresh
22 -endevent
23
24 Event AttractionName.Click
25   ViewAttractionFromScratch(AttractionId)

```

We already saw in previous videos how in our Travel Agency application we could add a variable &Trips to our grid, and how to load it for each line from the Load event.

If instead of implementing this on a manually created web panel as we did, we wanted to use the Work With for Web pattern, how would we do that?

## Pattern Work With for Web



To add the variable, we right-click on the Attributes /Add/Variable node. We define it through the properties window where we will be asked to name the variable and its domain. Also, we will see that a property named Load Code is displayed. That's where we specify what value the variable will be loaded with for each line of the grid. We will enter the Count formula, passing it the TripDate attribute, just as we did from the WebPanel generated by us, since we are interested in counting the number of trips entered for each of the attractions.

## Pattern Work With for Web





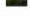
WWAttraction

```

81 | Event Grid.Load
82 |   &update.Link = Attraction.Link(TrmMode.Update, AttractionId)
83 |   &delete.Link = Attraction.Link(TrmMode.Delete, AttractionId)
84 |   AttractionName.Link = ViewAttraction.Link(AttractionId, "")
85 |   CountryName.Link = ViewCountry.Link(CountryId, "")
86 |
87 |   // Load variable '&Trips'
88 |   &Trips = (count(TripDate))
89 | EndEvent
90 |
91 | Event 'DoInsert'
92 |   Attraction(TrmMode.Insert, nullvalue(AttractionId))
93 | EndEvent
94 |
95 | Sub 'PrepareTransaction'
96 |   &TrmContext = new()
97 |   &TrmContext.CallerObject = &pgname
98 |   &TrmContext.CallerOnDelete = True
99 |   &TrmContext.CallerURL = &HTTPRequest.ScriptName + "?" + &HTTPRequest.QueryString
100 |   &TrmContext.TransactionName = !"Attraction"
101 |
102 |   &Session.Set(!"TrmContext", &TrmContext.ToXml())
103 | EndSub
104 |
105 |

```

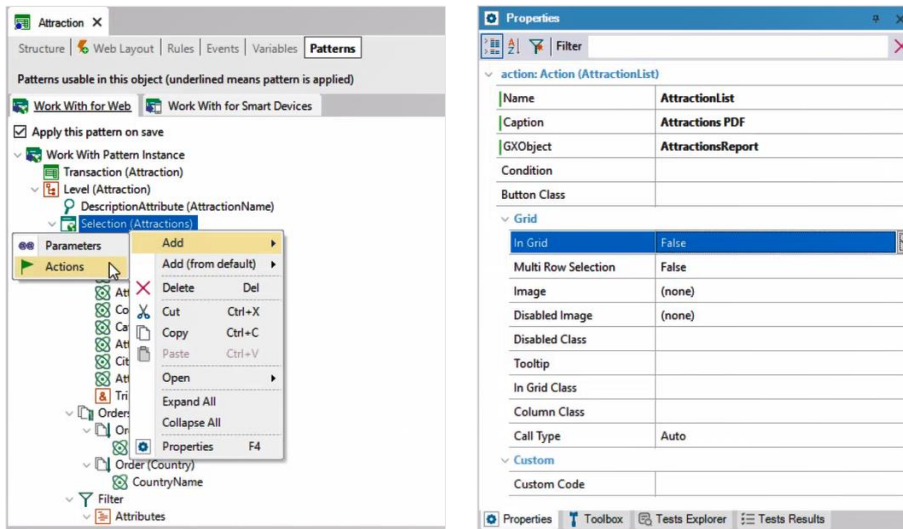
In action

Id	Name	Country Name	Category Name	Photo	City Name	Description	Trips	
4	Christ the Redeemer	Brazil	Monument		Rio de Janeiro	An Art Deco statue of Jesus Christ in Rio de Janeiro	2	UPDATE DELETE
12	Colosseum	Italy	Tourist site		Rome	A colony of controversial suburban villages on the rugged Italian Peninsula coastline	0	UPDATE DELETE
3	Eiffel Tower	France	Monument		Paris	Wrought-iron lattice tower on the Champ de Mars in Paris	2	UPDATE DELETE
7	Forbidden city	China	Tourist site		Beijing	The former Chinese imperial palace and state residence of the Emperors of China from the Ming dynasty	4	UPDATE DELETE
8	Glenfiddich	Scotland	Tourist site		Glenfiddich	A railway viaduct on the West Highland Line in Glenfiddich. Located at the top of Loch Shiel in the West Highlands of Scotland, the viaduct overlooks the Glenfiddich Monument and the waters of Loch	2	UPDATE DELETE

If we save what we have done in the “instance file” of the pattern and open the web object WWAttraction panel created automatically, we will see that in the Load event of the grid, the pattern placed the code that we indicated to load the variable.

Let's see how it works.

## Pattern Work With for Web








Now, we want to add a text/link/button outside the grid, which allows us to invoke the AttractionsReport procedure that we had created to print all the attractions as a PDF.

We add an action at the level of the Selection node that implements the Work With itself.

And by means of the properties we indicate the Caption that it will have, as well as if we want it to be an image instead of a text, if we want it to be outside the grid, or, on the contrary, a button inside the grid, for each line. And most importantly: what object to invoke as a consequence of choosing the action.

# In Action

Attractions  + INSERT ATTRactions PDF

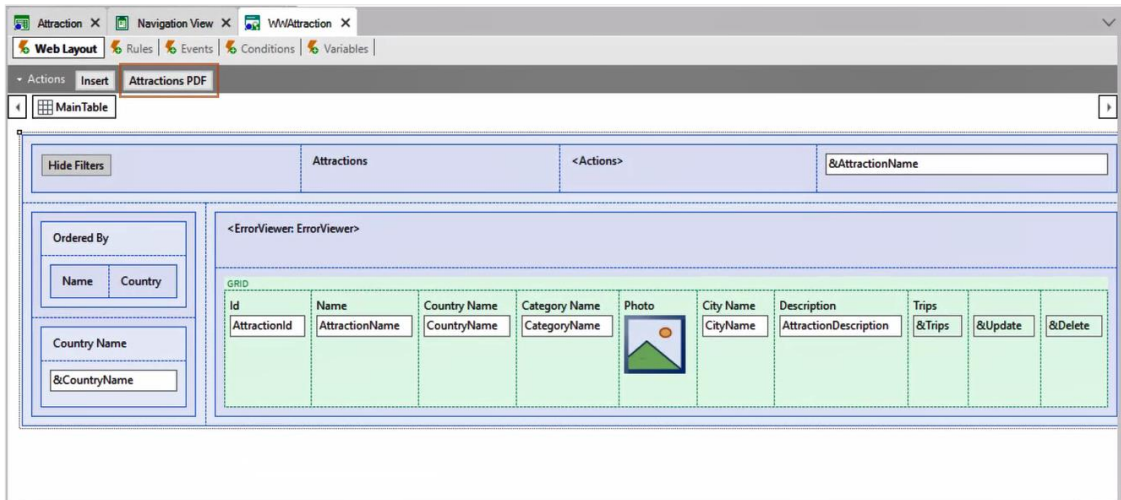
ID	Name	Country Name	Category Name	Photo	City Name	Description	Trips		
4	Christ the Redeemer	Brazil	Monument		Rio de Janeiro	An Art Deco statue of Jesus Christ in Rio de Janeiro	2	UPDATE	DELETE
12	Cinque Terre	Italy	Tourist site		Maranello	A string of centuries-old seaside villages on the rugged Italian Riviera coastline	0	UPDATE	DELETE
3	Eiffel Tower	France	Monument		Paris	Wrought-iron lattice tower on the Champ de Mars in Paris.	2	UPDATE	DELETE
7	Forbidden city	China	Tourist site		Beijing	The former Chinese imperial palace and main residence of the Emperor of China from the Ming dynasty	4	UPDATE	DELETE
8	Glenferris Viaduct	Scotland	Tourist site		Glenferris	A railway viaduct on the West Highland Line in Glenferris. Located at the top of Loch Lomond in the West Highlands of Scotland, the viaduct overlooks the Glenferris Monument	2	UPDATE	DELETE

Attraction List

ID	Name	Country	Photo
4	Christ the Redeemer	Brazil	
1	Louvre Museum	France	
3	Eiffel Tower	France	
6	Museum Museum	France	
2	The Great Wall	China	
7	Forbidden city	China	
9	Meil the Emperor	China	
5	Southampton Institute	United States	

We see it running.

## Action bar in WWAttraction



By opening the web panel generated by the pattern, we can see how the action has been included in the Action Bar.

*GeneXus*<sup>™</sup>

[training.genexus.com](http://training.genexus.com)  
[wiki.genexus.com](http://wiki.genexus.com)