

Globant ▶  
Enterprise AI

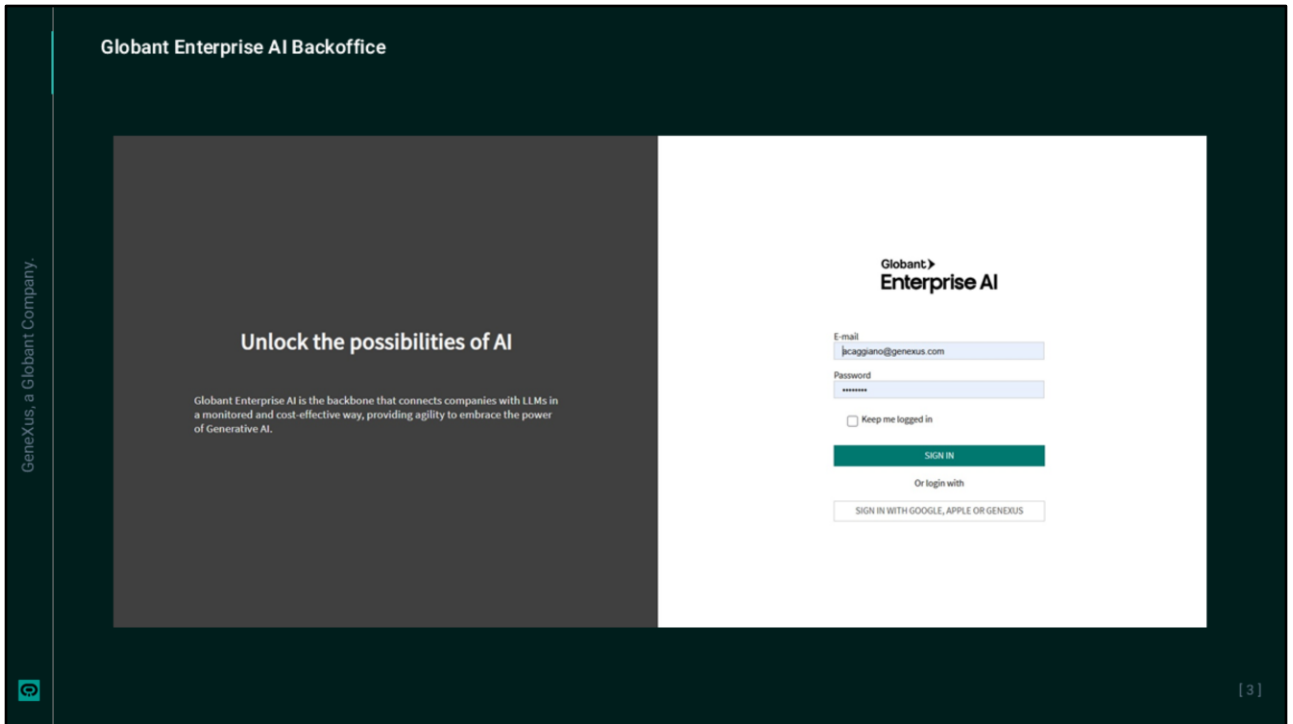


# Globant Enterprise AI Backoffice

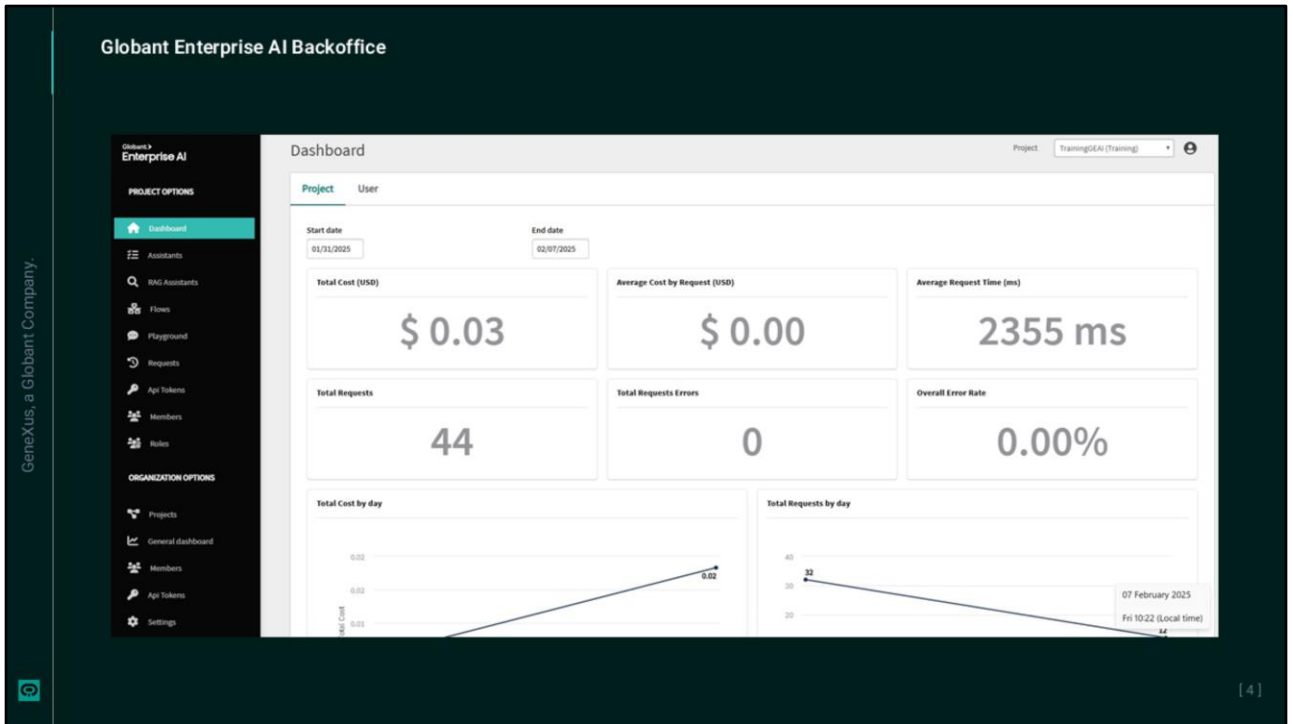


Alejandra Caggiano

Globant Enterprise AI provides a backoffice to perform essential tasks for managing projects and settings.



You can easily customize projects, define and test wizards, generate API tokens, manage members, and adjust observability options.

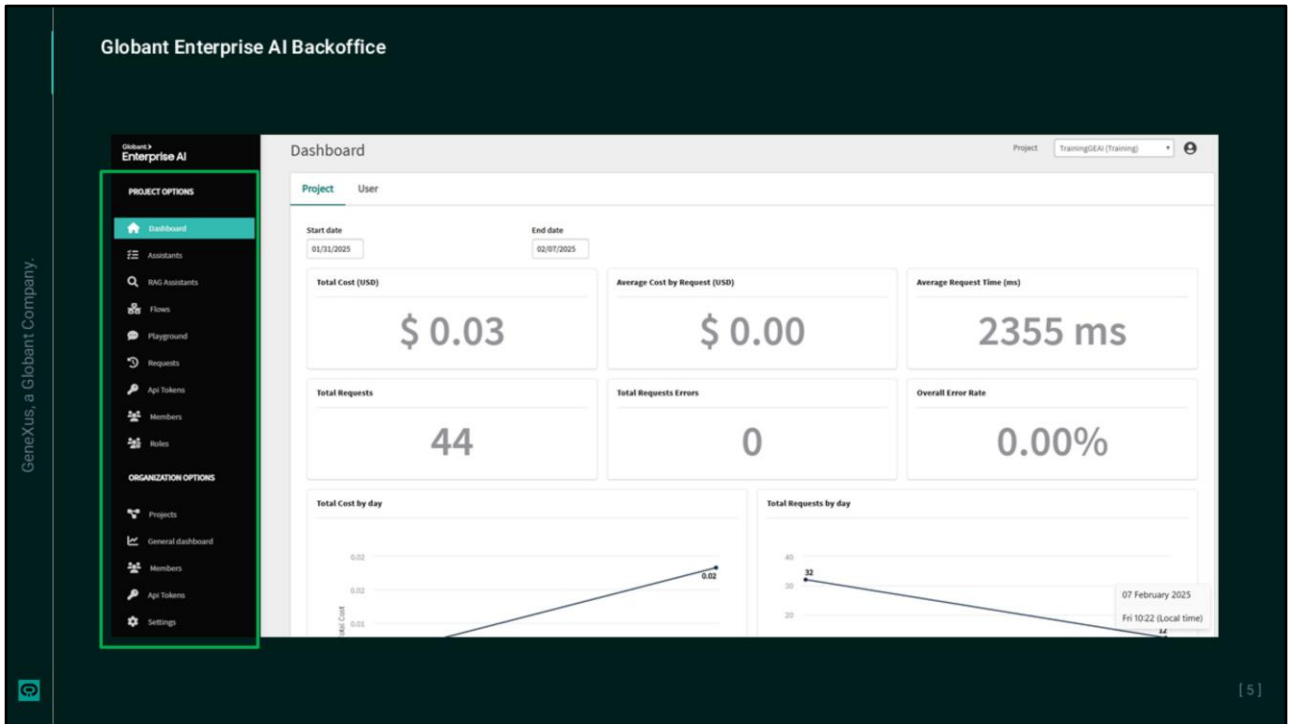


Let's access this backoffice.

First, we see a panel showing indicators related to the usage and costs of the selected project.

From here, it is possible to select the project, and from there filter all the information displayed on the panel and the options offered in the menu on the left.

Next to the project name, we also find a user menu to access specific tasks and other settings.



OK. Here we have the backoffice menu, which offers access to different functionalities depending on the credentials of the logged-in user, both to manage the organization and to manage their projects.

Projects are the central entities where different configurations and settings are defined, including the ability to define wizards, generate API tokens, and perform document management tasks within the organization.

As for the organization, depending on the credentials of the logged-in user, it is possible to manage projects and members, generate API tokens, access general indicators, etc.

In addition, Globant Enterprise AI stores and tracks every request made through its APIs, providing organizations with full visibility into the use of wizards, artificial intelligence models, and the cost associated with each request.

This enables organizations to monitor and analyze resource usage, make informed decisions about the allocation of those resources, and optimize usage to achieve cost-effectiveness.

By leveraging these features, organizations can maintain control over their artificial intelligence infrastructure, identify areas for improvement, and make data-driven decisions to improve operational efficiency.

GeneXus, a Globant Company.

Globant Enterprise AI

PROJECT OPTIONS

Dashboard

Assistants

RAG Assistants

Flows

Playground

Requests

API Tokens

Members

Rules

ORGANIZATION OPTIONS

Projects

General dashboard

Members

API Tokens

Settings

Projects (Organization Training)

Project Training(LEAI (Training))

CREATE NEW

EXPORT

Project Name

Start with tr

Active true

Organization	Project	Description	Active			
Training	TrainingCourse	Project defined for GeneXus Enterprise AI course	✓	UPDATE	DELETE	USAGE LIMITS
Training	TrainingLEAI	Project defined for Globant Enterprise AI course	✓	UPDATE	DELETE	USAGE LIMITS
Training	TrainingProject	Project for the GeneXus Enterprise AI Course	✓	UPDATE	DELETE	USAGE LIMITS
Training	TrainingResources	Este proyecto define asistentes para tareas internas de Capacitación.	✓	UPDATE	DELETE	USAGE LIMITS
Training	TrainingTeam	Proyecto creado para el equipo de Capacitación.	✓	UPDATE	DELETE	USAGE LIMITS

Page 1 of 1

Filtering by Project Name and Active

<

>

So, let's start with project and member management.

6

Globant ▶  
Enterprise AI